

Legend

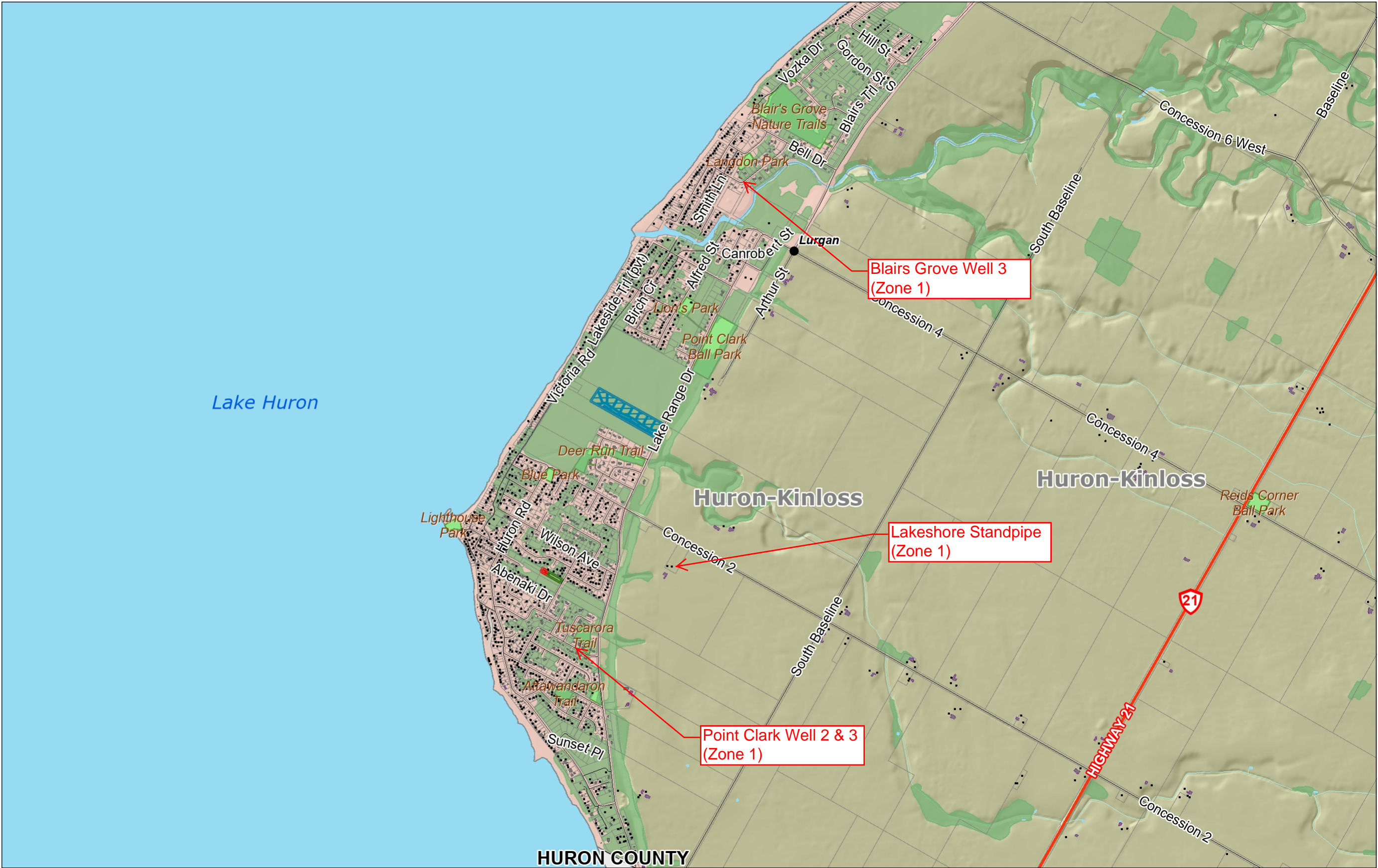
- Rural Community point, labelled
- Ferry
- Provincial Highway
- County Road
- County Road
- ↔ Bridge reconstruction
- Municipal or Other Road (small scale)
- OBM Building Location
- OBM Building Footprint
- Building Footprint
- Propane Facility Buffer
- Severance
 - ▨ Severed portion
 - ▨ Retained portion
- Subdivision
 - ▨ Draft Approved
 - ▨ Final Approved
- Body of Water
- Evaluated Wetland
- Watercourse
 - Permanent Stream
 - Intermittent Stream
- ▨ Conservation Authority Property boundary
- Provincial Park
- Fathom Five
- ▨ County Forest Boundary
- County Forest
- Wooded Area
- Conservation Authority Property
- Parkland
- Golf Course
- Wetland
- Body of Water
- Built-up area
- Adjacent Counties
- Lake Huron and Georgian Bay

1: 25,000

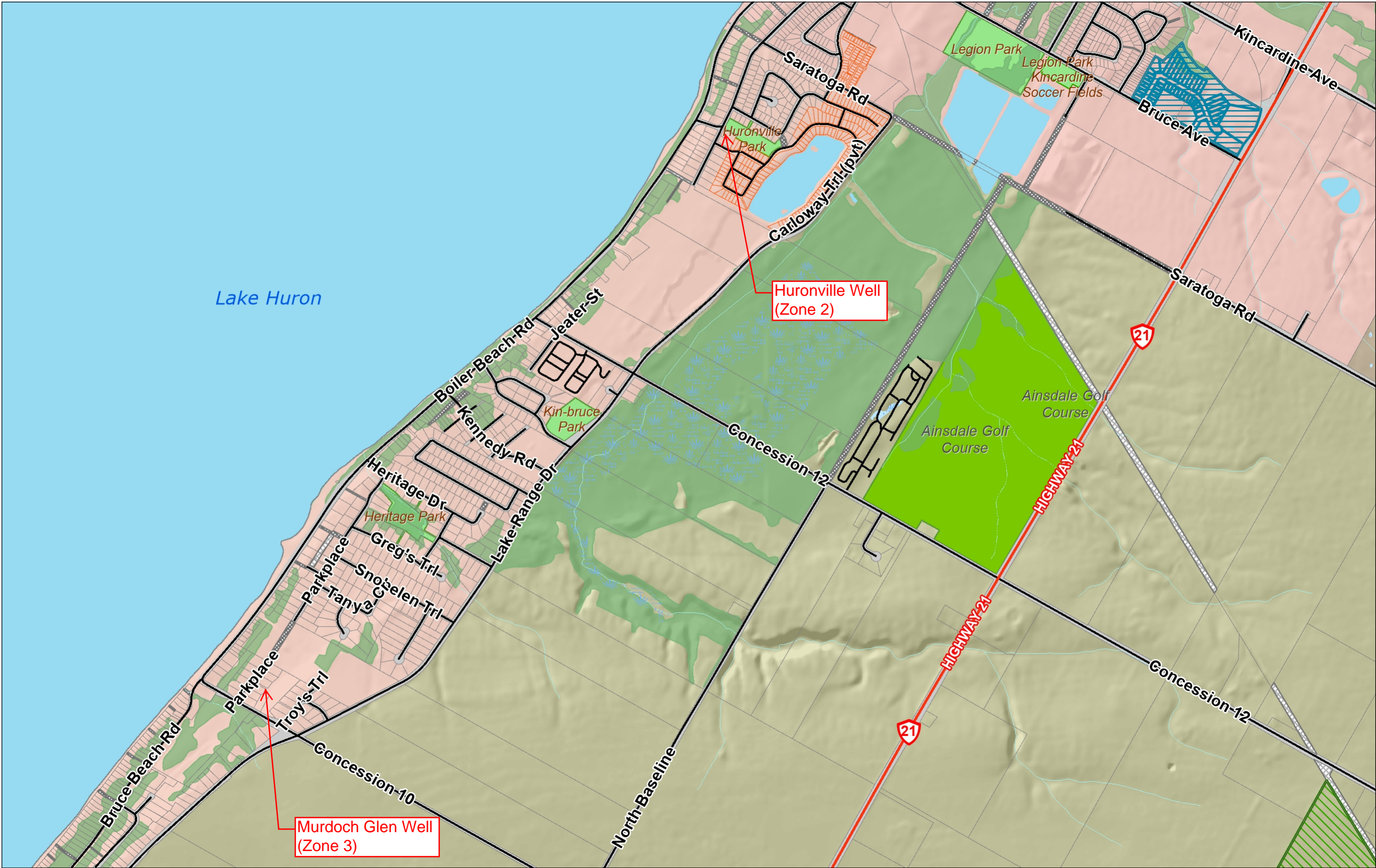
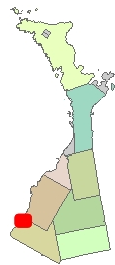


Notes

This map was automatically generated using Geocortex Essentials.



1.3 0 0.64 1.3 Kilometers



Legend

- Rural Community point, labelled
- Ferry
- Provincial Highway
- County Road
- County Road
- ↔ Bridge reconstruction
- Municipal or Other Road
- Municipal or Other Road
- Bridge Detrou
- Propane Facility Buffer
- Severance
 - ▨ Severed portion
 - ▨ Retained portion
- Subdivision
 - ▨ Draft Approved
 - ▨ Final Approved
- Body of Water
- Evaluated Wetland
- Watercourse
 - Permanent Stream
 - Intermittent Stream
- Road Allowance/Right-of-way
 - ▨ Private Road Allowance
 - ▨ Right-of-Way
 - ▨ Road Allowance or Condo Road
 - ▨ Unopened Road Allowance
- Conservation Authority Property boundary
 - ▨ Provincial Park
 - ▨ Fathom Five
 - ▨ County Forest Boundary
 - ▨ County Forest
 - ▨ Wooded Area
 - ▨ Conservation Authority Property
 - ▨ Parkland
 - ▨ Golf Course
 - ▨ Wetland
 - ▨ Body of Water
 - ▨ Built-up area
 - ▨ Adjacent Counties
 - ▨ Lake Huron and Georgian Bay

1: 16,000



0.8 0 0.41 0.8 Kilometers

Notes

This map was automatically generated using Geocortex Essentials.