



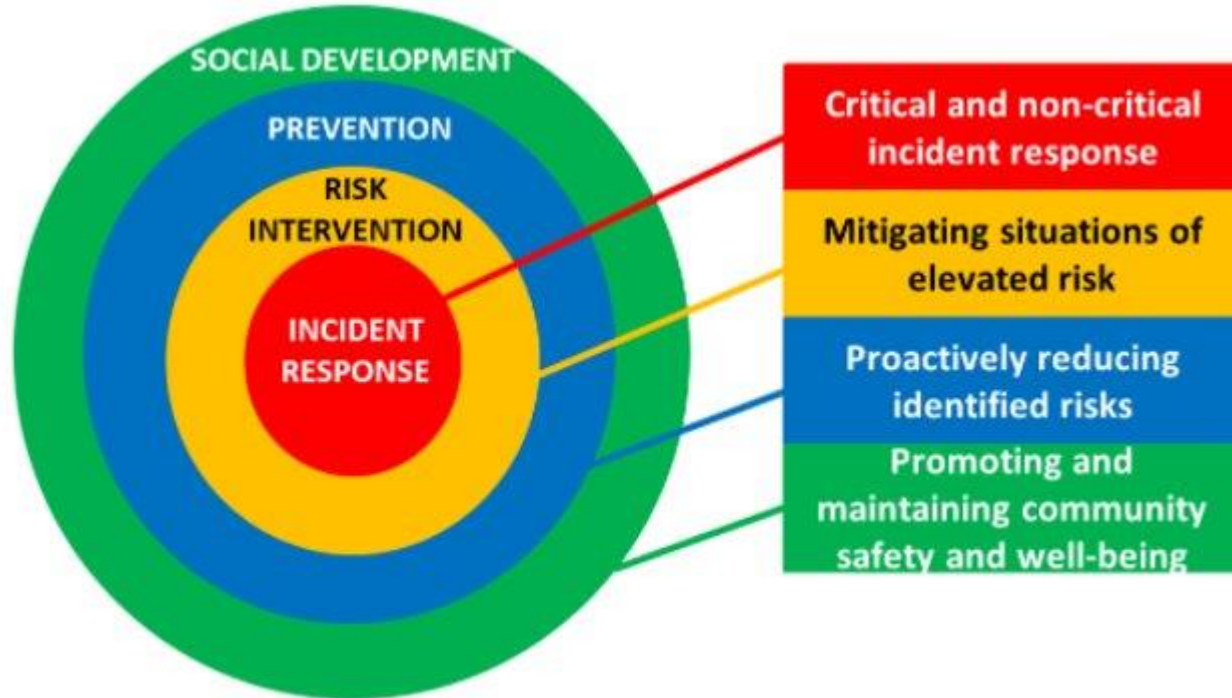
Grey Bruce CSWBP

# **Community Safety & Well-Being Planning**

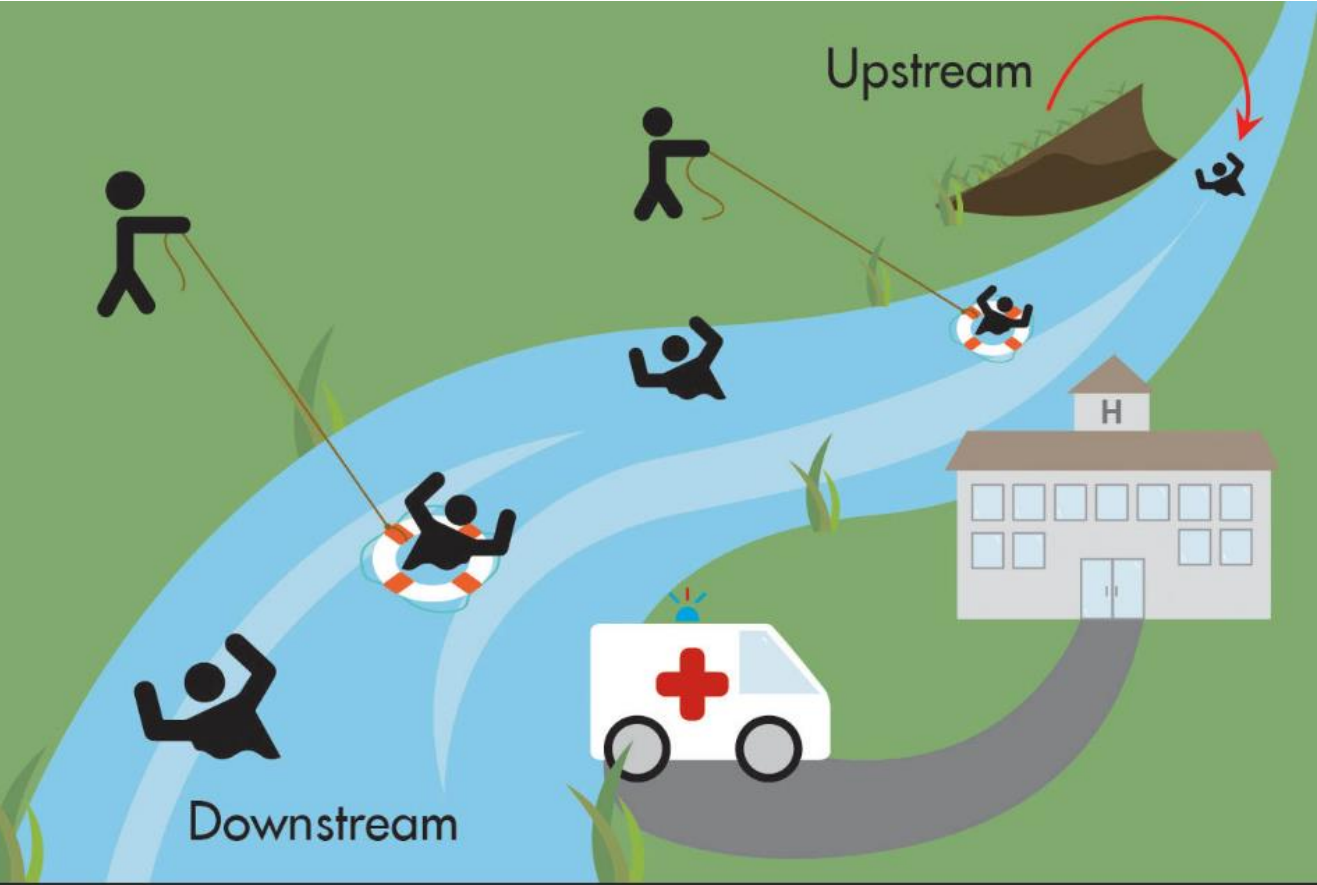
# Community Safety and Well-Being Planning

- Upstream Prevention
- Enhanced Coordination and Communication
- Evidence-Based Decision-Making and Planning
- Reduced Investment in Incident Response

# Ontario Community Safety and Well-Being Planning Framework



# Upstream Prevention

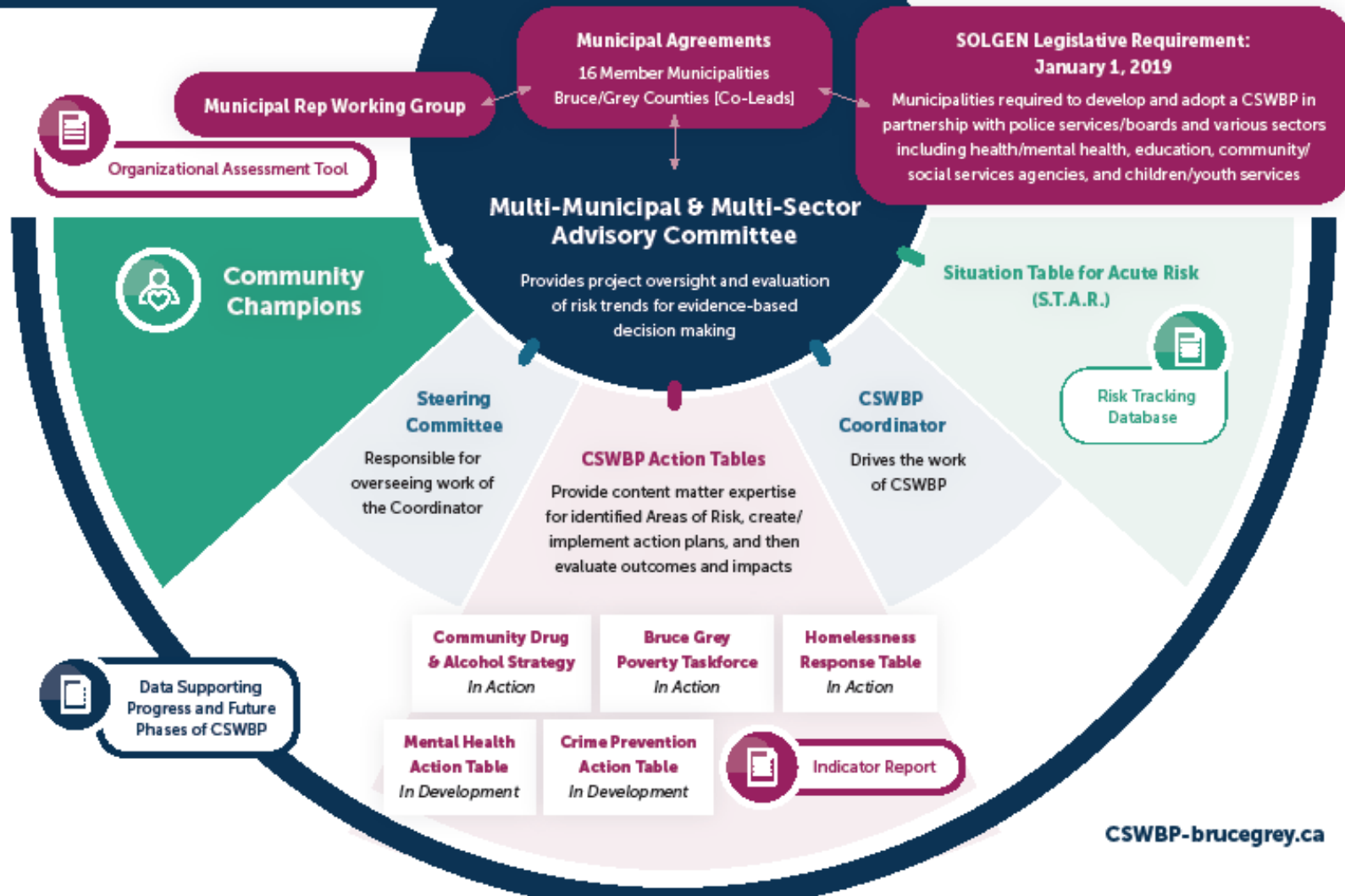


Source: Public Health Sudbury and Districts ([Public Health Sudbury & Districts - \(phsd.ca\)](http://phsd.ca))

# Governance Structure

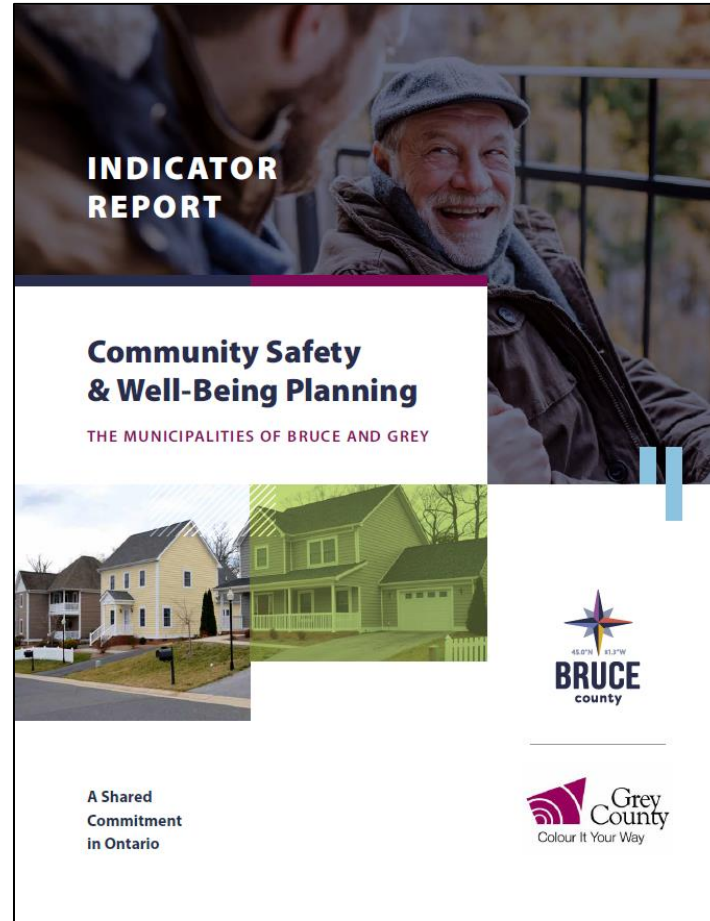
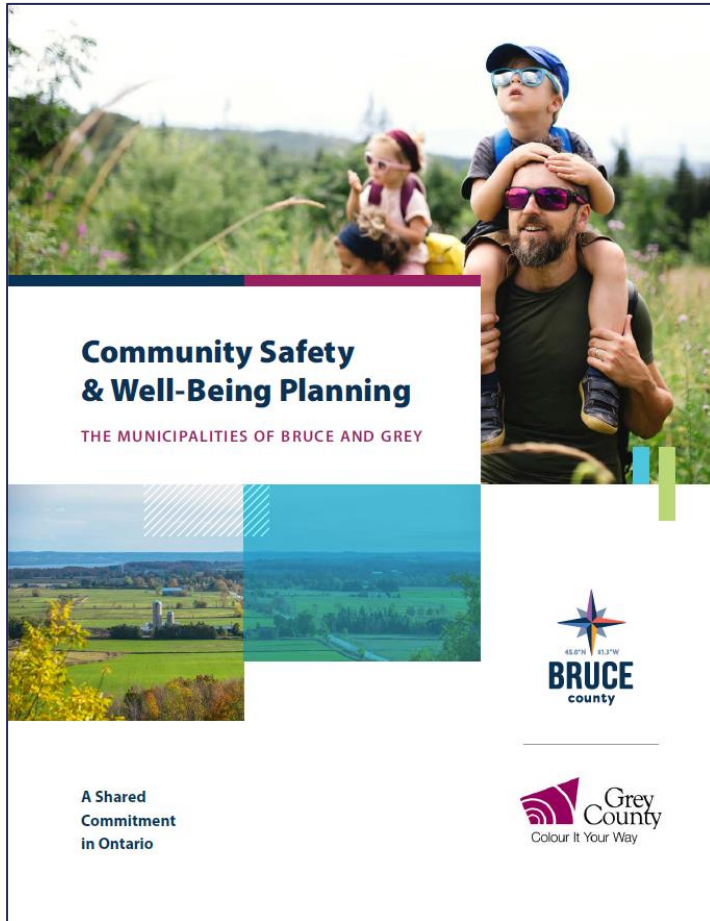


Grey Bruce CSWBP  
**Community Safety &  
Well-Being Planning**



**SOLGEN Legislative Requirement:  
January 1, 2019**

Municipalities required to develop and adopt a CSWBP in partnership with police services/boards and various sectors including health/mental health, education, community/social services agencies, and children/youth services

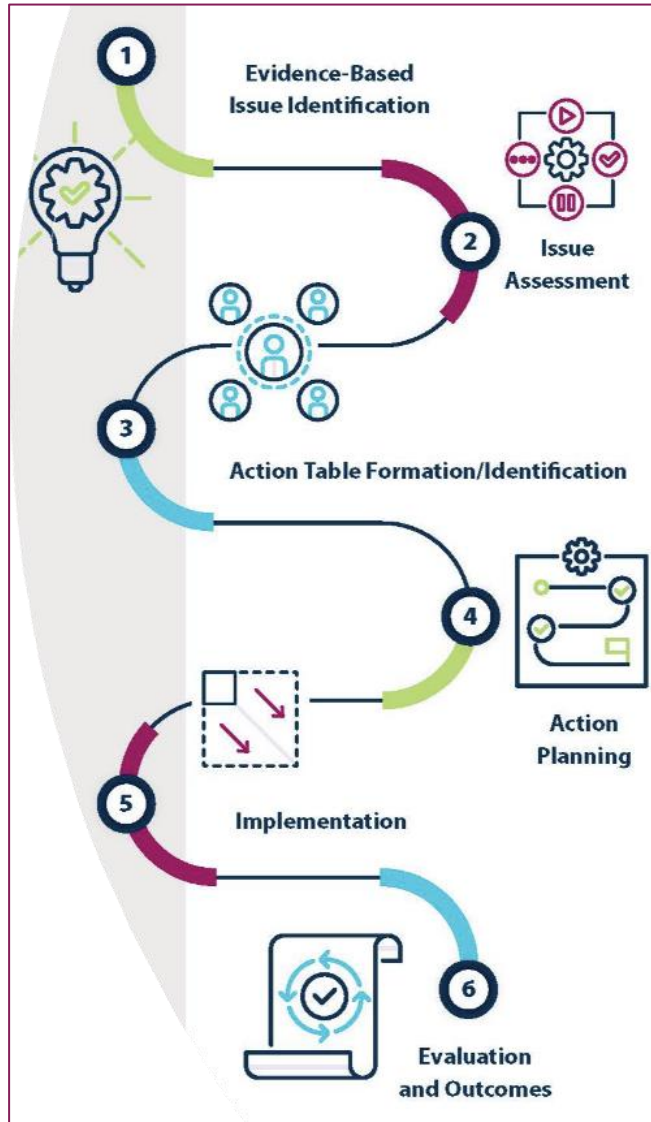


[Community Safety & Well-Being Planning \(cswbp-brucegrey.ca\)](https://cswbp-brucegrey.ca)

[Indicator Report - Community Safety & Well-Being Planning \(cswbp-brucegrey.ca\)](https://cswbp-brucegrey.ca)



# Issue Assessment Process



- Referral (Action Table or Community Agency)
- Awareness
- Support
- Advocacy
- Research



# Action Tables

## CSWBP Action Tables

Provide content matter expertise for identified Areas of Risk, create/ implement action plans, and then evaluate outcomes and impacts



# Organizational Assessment Tool

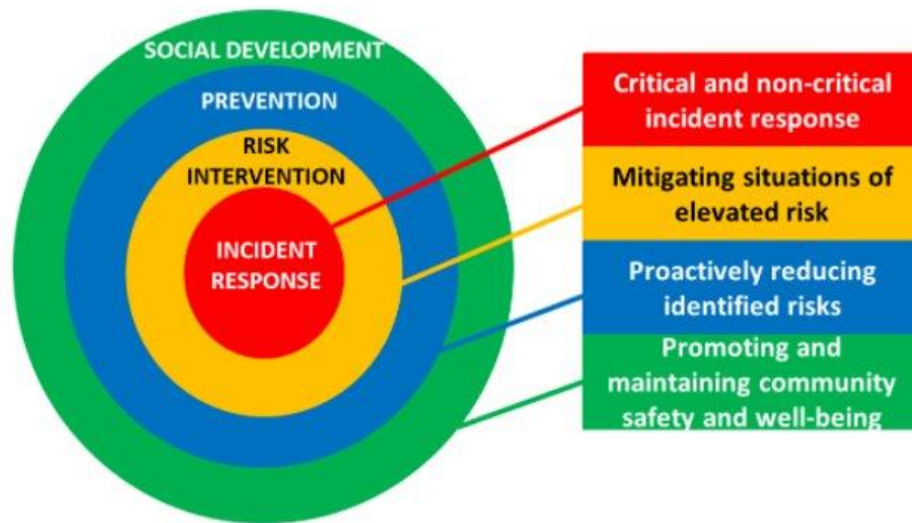


- Identify ways in which community safety and well-being is prioritized through policies and programs that focus on social development and prevention
- Determine resources needed to sustain and improve programs
- Share best practices throughout Bruce-Grey

# S.T.A.R.

A Situation Table is a meeting of police services, social services, and other community agencies who use their combined expertise to work together to reduce the chance that someone will experience harm from a combination of risk factors that heighten the chances of imminent victimization.

Short-term, immediate, collaborative interventions (within 48 hours)

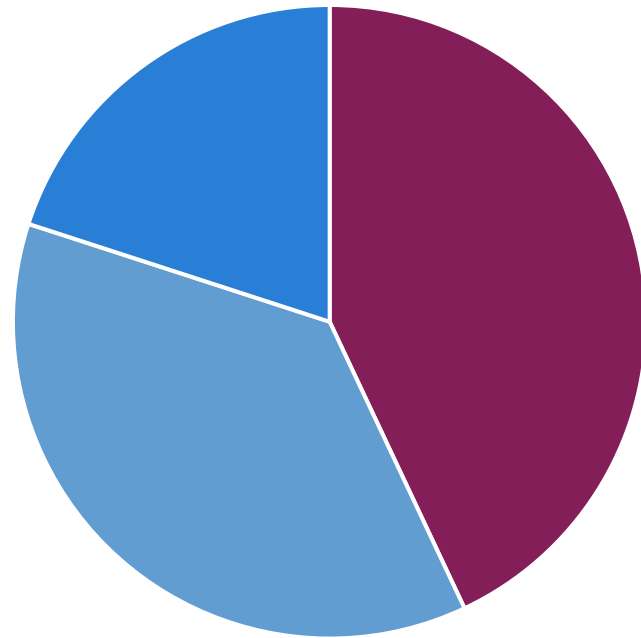


# Acutely Elevated Risk

Acutely elevated risk (AER) refers to any situation impinging on individuals, families, groups, or places where circumstances indicate an extremely high probability of the occurrence of victimization from crime or social disorder. Left unattended such situations will require emergency responses.

# Top Services Mobilized (Jan 1 – Dec 15 2022)

Mobilization Type



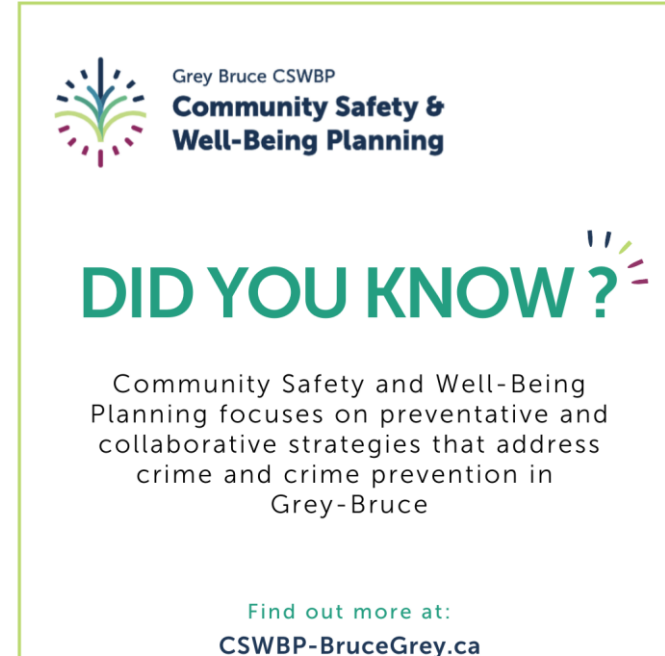
■ Connected to Service ■ Engaged with Service ■ Informed of Service

Most Frequently Mobilized Services:

- Housing
- Addiction
- Mental Health

# Communication and Outreach

- CSWBP Branding
- New Website Development
- Social Media Campaign
- CSWBP FAQ



# 2023 Objectives

- Establish crime prevention and mental health action tables
- Establish reporting frameworks for action tables
- Enhance community asset mapping based on provincial community safety and well-being planning framework
- Focus on public information sharing and community engagement concerning the relationship between upstream prevention and crime prevention
- Facilitate S.T.A.R. training and continue to establish best practices for referrals and collaboration with other response tables
- Explore opportunities to sustain long-term funding for CSWBP in Bruce and Grey



# QUESTIONS and COMMENTS

# THANK YOU!

Should you have any questions about the work of CSWBP, please don't hesitate to contact any of the Steering Committee members:

- Christine MacDonald [cmacdonald@brucecounty.on.ca](mailto:cmacdonald@brucecounty.on.ca)
- Anne Marie Shaw [annemarie.shaw@grey.ca](mailto:annemarie.shaw@grey.ca)
- Krista Miller [krista.miller@opp.ca](mailto:krista.miller@opp.ca)
- Jason Wepler [j.wepler@publichealthgreybruce.on.ca](mailto:j.wepler@publichealthgreybruce.on.ca)

Sarah Pelton, CSWBP Coordinator [spelton@brucecounty.on.ca](mailto:spelton@brucecounty.on.ca)

# Appendix

- Upstream Prevention (video example: Centers for Disease Control and Prevention)
- Risk and Protective Factors
- Action Tables
- Situation Table (STAR) Data:
  - Demographics
  - Risk Categories
  - Situation Conclusion Reasons

# Upstream Prevention



Source: Centers for Disease Control and Prevention: Principles of Prevention

# Risk Factors and Protective Factors

Risk Factors	Protective Factors
Anti-social behavior (non-criminal)	Education
Criminal involvement	Family supports
Education/employment	Financial security and employment
Emotional violence	Housing and neighbourhood
Family circumstances	Mental health
Gang Issues	Physical health
Housing	Pro-social/positive behaviour
Mental health and cognitive functioning	Social support network
Neighbourhood	
Peers	
Physical Health	
Substance abuse issues	
Victimization	

# Action Tables

- Addictions/Substance Use: Community Drug & Alcohol Strategy  
<https://drugstrategy.org>



- Poverty and Income: Poverty Task Force  
<https://povertytaskforce.com>



- Housing and Homelessness: Homelessness Response Table

<https://www.brucecounty.on.ca/housing-services>

<https://www.grey.ca/resident-services/community-services/housing-programs-and-services>



- Crime Prevention (In Development)
- Mental Health (In Development)

# Crime Prevention Action Table



Grey Bruce CSWBP  
**Community Safety &  
Well-Being Planning**

## Seeking Volunteers

Community Safety and Well-Being Planning is establishing an Action Table to address crime prevention which has been identified as one of five priority areas of concern.

**Are you interested in...**

- Promoting crime prevention by focusing on community education?
- Addressing misconceptions about crime and social disorder?
- Increasing awareness about risk factors associated with crime and protective factors that can reduce these risks?

**What is the Crime Prevention Action Table?**

This action table is comprised of experts and individuals that take a root-cause approach to community safety and reducing victimization. They aim to increase knowledge and understanding of community safety and well-being issues facing our communities. The approximate time commitment is 3 hours monthly.

**To Learn More**  
Please email  
[SPelton@brucecounty.on.ca](mailto:SPelton@brucecounty.on.ca)

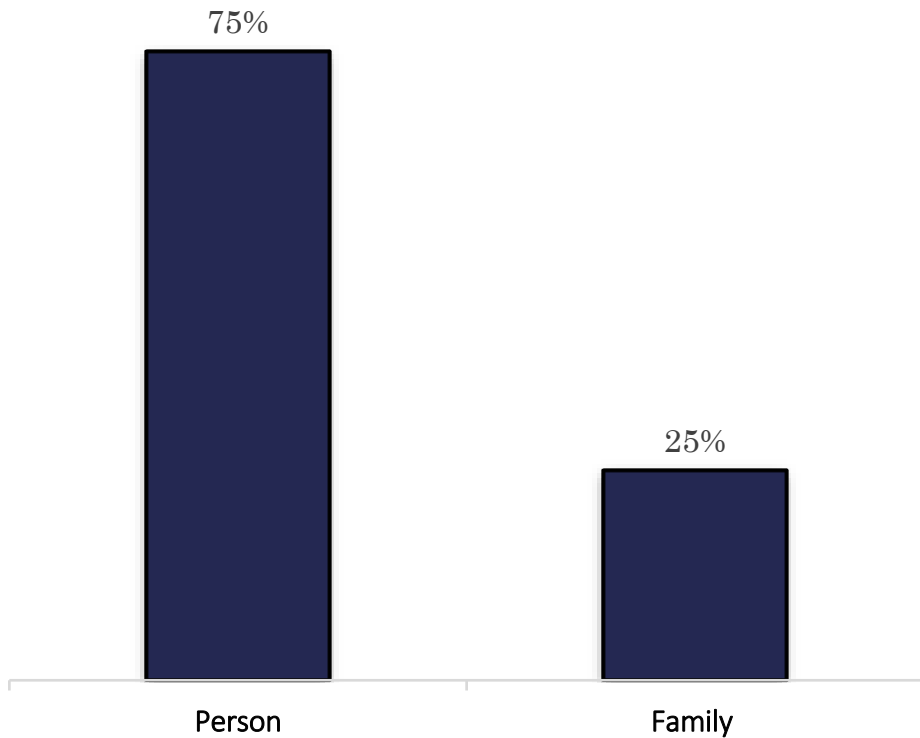


Find out more at:  
[CSWBP-BruceGrey.ca](http://CSWBP-BruceGrey.ca)

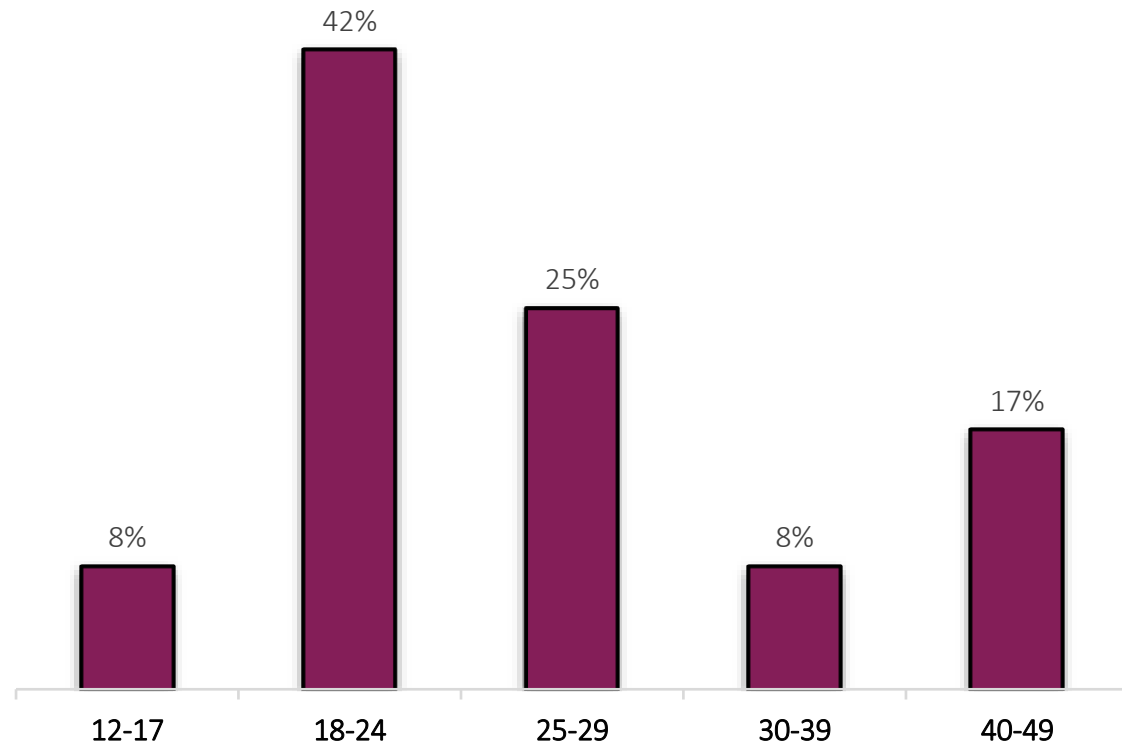


# STAR Demographics (Jan 1 – December 15 2022)

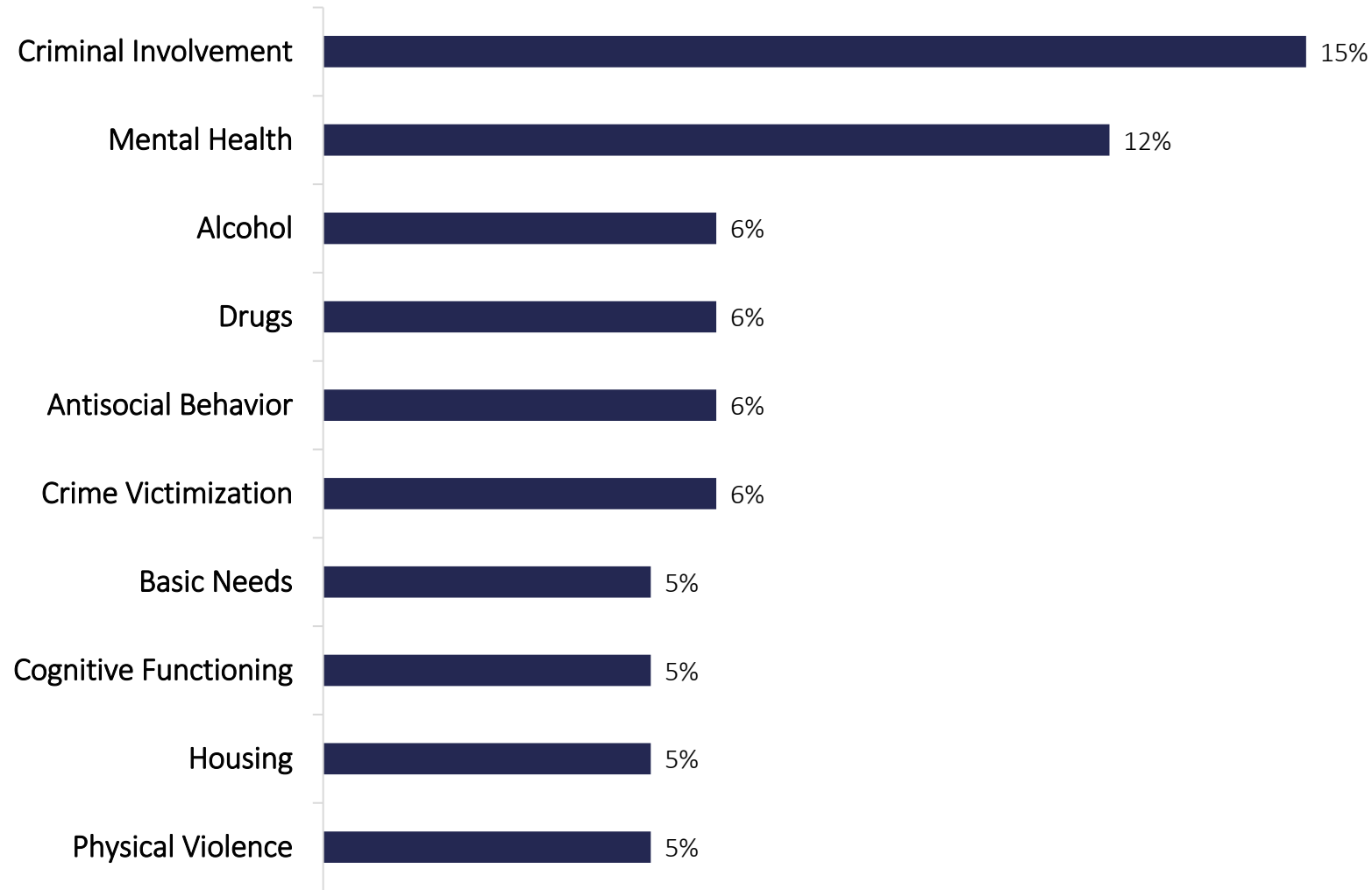
Situation Type



Age

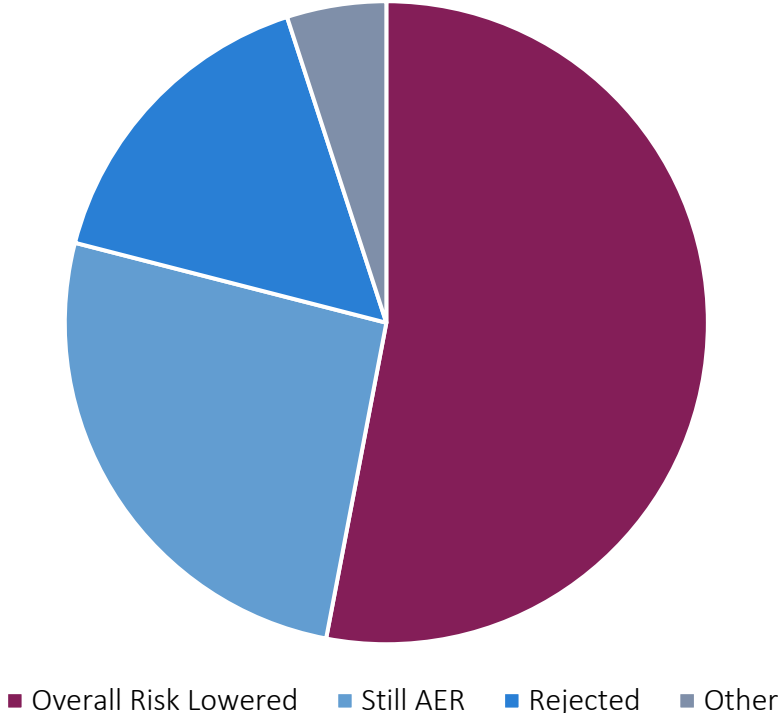


# STAR Top Risk Categories (Jan 1 – Dec 15 2022)



# STAR Conclusion Reasons (Jan 1 – Dec 15 2022)

Conclusion Reason



Where Overall Risk Was Lowered

