



≡ MENU

Bruce County Paramedics Recognized for Exemplary Service

Bruce County Paramedic Judy Brookshaw and Retired Paramedic Gloria Bowes received Governor General's Emergency Medical Services Exemplary Service Medals on Thursday, June 1, 2023 at the Paramedic Services Committee Meeting at the Walkerton Administration Centre.



BRUCE

county

June 01, 2023

Bruce County Paramedic Judy Brookshaw and Retired Paramedic Gloria Bowes received Governor General's Emergency Medical Services Exemplary Service Medals on Thursday, June 1, 2023 at the Paramedic Services Committee Meeting at the Walkerton Administration Centre.

The Emergency Medical Services Exemplary Service Medal recognizes professionals in the provision of pre-hospital emergency medical services to the public, who have performed their duties in an exemplary manner, characterized by good conduct, industry, and efficiency, and have completed twenty years of exemplary service, including at least ten years in the performance of duties involving potential risk.

Judy Brookshaw has been a paramedic with Bruce County since May of 1999 and is currently a Community Paramedic based out of the Wiarton area. Judy is planning on retiring at the end of December 2023.

Gloria Bowes was a paramedic with Bruce County from March 2004 to February 2022, and is currently enjoying retirement. Prior to her service in Bruce County at the Kincardine and Walkerton Stations, Gloria worked in Sioux Lookout, Ontario.

Judy Brookshaw and Gloria Bowes were due to receive these medals in 2020, but the COVID-19 pandemic cancelled the Ontario Association of Paramedic Chiefs annual awards banquet for the past few years. Bruce County is proud to now honour Judy and Gloria with their exemplary service medals, in conjunction with 2023 Paramedic Services Week.

“We are thankful to have Paramedics like Judy Brookshaw and Gloria Bowes serving our communities. It is a true honour for them to be recognized for their exemplary service and outstanding careers,” said Paramedic Services Chief Steve Schaus.

“Thank you Paramedics Judy Brookshaw and Gloria Bowes for your exemplary service to our region,” said Warden Chris Peabody. “Your Governor General’s Emergency Medical Services Exemplary Service Medals are well deserved.”

About Bruce County Paramedic Services

Bruce County Paramedic Services employs a staff of about 100 Full-time and Part-time paramedics that provide pre-hospital care to citizens and visitors of Bruce County. We respond to medical and trauma emergencies with a fleet of 12 ambulances and 3 supervisor units that are stationed in 7 communities across the County but can be deployed anywhere as needed.

Discover more about [Bruce County Paramedic Services](#).

CONTACT US

Administration Centre

30 Park St., P.O. Box 70
Walkerton, Ontario N0G 2Vo
Tel: 519-881-1291
Toll free: 1-800-265-3005
info@brucecounty.on.ca

Economic Development



Tourism



Library



Museum



[Talk to us](#)

DEPARTMENTS

[Office of the CAO](#)

[Corporate Services](#)

[Transportation and Environmental Services](#)

[Human Resources](#)

[Library](#)

[Museum](#)

[Health Services](#)

[Planning & Development](#)

[Human Services](#)

BRUCE & GREY
COMMUNITY INFORMATION



[Notice of Loss/Injury Claim](#)

COUNTY WEBSITES

[Business to Bruce](#)

[Explore the Bruce](#)

[Bruce County Public Library](#)

[Bruce County Museum & Cultural Centre](#)

[Bruce Remembers](#)

[Museum Online Collections](#)

COVID-19 Information
and Updates

USEFUL LINKS

[Road and Bridge Construction and Detours](#)

[Nuclear Innovation Institute](#)

[Bruce County Bids](#)

[Hazardous Waste Collection Schedule](#)

[Road Construction](#)

[EarlyON Child and Family Centres](#)

[Agendas and Minutes](#)

[Employment](#)

[Anaphylaxis \(Nut Aware\) Policy](#)

[Application Links](#)

[File Transfer](#)

[Privacy Policy](#)

[Public Washrooms Map](#)

© 2022 The County of Bruce. All Rights Reserved.

Any documents found on this page are available in a variety of accessible formats or communication supports upon request. Due to conditions beyond our control, there are some instances where we are unable to provide information in an accessible format (for example, our mapping information). We will be monitoring these sections, and develop an accessible solution as technology improves. If you use assistive technology and the format of any content on this web site interferes with your ability to access the information, please contact the Clerk at 519-881-1291 or LWhite@brucecounty.on.ca



≡ MENU

NOTICE: Lane Closures on Stephenson Bridge in Pinkerton

Please take notice that bridge rehabilitation repair will be taking place this summer at Stephenson Bridge on Bruce Road 15 in Pinkerton, Ontario. Motorists can expect lane closures on the bridge, with traffic control measures in place starting June 12, 2023, and ending in August 2023.

 Pinkerton Lane Closure Map

June 06, 2023

Please take notice that bridge rehabilitation repair will be taking place this summer at Stephenson Bridge on Bruce Road 15 in Pinkerton, Ontario. Motorists can expect lane closures on the bridge, with traffic control measures in place starting June 12, 2023, and ending in August 2023.

Signage will be in place during these lane closures. Users are asked to be patient and drive safely as the Contractor works to complete crucial repairs to the bridge.

McLean Taylor has been awarded the Stephenson Bridge rehabilitation repair work. BM Ross and Associates are conducting the contract administration and inspection of the work.

Thank you for your patience and understanding as we complete this important infrastructure work in Bruce County.

Discover more about [Transportation & Environmental Services](#).

For more information, contact:

Ryan Errington
Engineering Technologist
Bruce County
519-881-2400
rerrington@brucecounty.on.ca

Adam Stanley
Engineering Manager
Bruce County
519-881-2400
astanley@brucecounty.on.ca

CONTACT US

Administration Centre

30 Park St., P.O. Box 70
Walkerton, Ontario NoG 2Vo
Tel: 519-881-1291
Toll free: 1-800-265-3005
info@brucecounty.on.ca

Economic Development



Tourism



Library



Museum



[Talk to us](#)

DEPARTMENTS

[Office of the CAO](#)

[Corporate Services](#)

[Transportation and Environmental Services](#)

[Human Resources](#)

[Library](#)

[Museum](#)

[Health Services](#)

[Planning & Development](#)

[Human Services](#)



COUNTY WEBSITES

[Business to Bruce](#)

[Explore the Bruce](#)

[Bruce County Public Library](#)

[Bruce County Museum & Cultural Centre](#)

[Bruce Remembers](#)

[Museum Online Collections](#)

COVID-19 Information
and Updates

USEFUL LINKS

[Road and Bridge Construction and Detours](#)

[Nuclear Innovation Institute](#)

[Bruce County Bids](#)

[Hazardous Waste Collection Schedule](#)

[Road Construction](#)

[EarlyON Child and Family Centres](#)

[Agendas and Minutes](#)

[Employment](#)

[Anaphylaxis \(Nut Aware\) Policy](#)

[Application Links](#)

[File Transfer](#)

[Privacy Policy](#)

[Public Washrooms Map](#)



[Notice of Loss/Injury Claim](#)

Any documents found on this page are available in a variety of accessible formats or communication supports upon request. Due to conditions beyond our control, there are some instances where we are unable to provide information in an accessible format (for example, our mapping information). We will be monitoring these sections, and develop an accessible solution as technology improves. If you use assistive technology and the format of any content on this web site interferes with your ability to access the information, please contact the Clerk at 519-881-1291 or LWhite@brucecounty.on.ca



≡ MENU

Bruce County Announces New Director of Transportation & Environmental Services

Bruce County is pleased to announce the appointment of Adam Stanley as the new Director of Transportation & Environmental Services, effective June 19, 2023.



June 07, 2023

Bruce County is pleased to announce the appointment of Adam Stanley as the new Director of Transportation & Environmental Services, effective June 19, 2023.

As a member of the County's Senior Leadership Team, Adam will be responsible for setting and monitoring strategic and operational implementation plans, strategies, and policies for the County's roads and bridges, forests and trails, and guiding transportation and environmental initiatives.

Under Adam's leadership, the Transportation & Environmental Services team will:

Construct or maintain approximately 650 km of Bruce County roads and 148 bridges that connect our local urban, industrial, commercial, and recreational centres.

maintain the trail network, including 80 km of bike trails

manage forestry initiatives, including 4,850 hectares of forest

guide waste diversion and disposal initiatives.

Adam Stanley is an experienced leader in the civil engineering field, is a certified C.Tech with the Ontario Association of Certified Engineering Technicians and Technologists, and has valuable experience in the public sector. He has been the Engineering Manager for Bruce County since July 2022, and was previously the Engineering Services Manager and Environmental Services Manager for the Town of Saugeen Shores.

“Infrastructure in Bruce County is evolving with traffic demands and regional growth. We extend a congratulations to Adam Stanley, our new Director of Transportation & Environmental Services, who will continue to give life to our new Master Transportation Plan, which creates a safe and reliable transportation system for residents, visitors, and businesses,” said Warden Chris Peabody.

Discover more about [Transportation & Environmental Services in Bruce County](#).

CONTACT US

Administration Centre

30 Park St., P.O. Box 70
Walkerton, Ontario N0G 2V0
Tel: 519-881-1291
Toll free: 1-800-265-3005
info@brucecounty.on.ca

Economic Development

f

Tourism

f 

Library

f 

Museum

f 

[Talk to us](#)

DEPARTMENTS

[Office of the CAO](#)

[Corporate Services](#)

[Transportation and Environmental Services](#)

[Human Resources](#)

COUNTY WEBSITES

[Business to Bruce](#)

[Explore the Bruce](#)

[Bruce County Public Library](#)

[Bruce County Museum & Cultural Centre](#)

USEFUL LINKS

[Road and Bridge Construction and Detours](#)

[Nuclear Innovation Institute](#)

[Bruce County Bids](#)

[Hazardous Waste Collection Schedule](#)

[Road Construction](#)

[Library](#)

[Museum](#)

[Health Services](#)

[Planning & Development](#)

[Human Services](#)

[Bruce Remembers](#)

[Museum Online Collections](#)

COVID-19 Information
and Updates

[EarlyON Child and Family Centres](#)

[Agendas and Minutes](#)

[Employment](#)

[Anaphylaxis \(Nut Aware\) Policy](#)

[Application Links](#)

[File Transfer](#)

[Privacy Policy](#)

[Public Washrooms Map](#)



[Notice of Loss/Injury Claim](#)

© 2022 The County of Bruce. All Rights Reserved.

Any documents found on this page are available in a variety of accessible formats or communication supports upon request. Due to conditions beyond our control, there are some instances where we are unable to provide information in an accessible format (for example, our mapping information). We will be monitoring these sections, and develop an accessible solution as technology improves. If you use assistive technology and the format of any content on this web site interferes with your ability to access the information, please contact the Clerk at 519-881-1291 or LWhite@brucecounty.on.ca



≡ MENU

Stratford-Bruce Peninsula Employment Service System Manager Recognized with an Ontario Municipal Social Services Association Award

The Stratford-Bruce Peninsula Employment Services Consortium was recognized by the Ontario Municipal Social Services Association with a Local Municipal Champion Award on May 9, 2023.



June 08, 2023

The [Stratford-Bruce Peninsula Employment Services Consortium](#) was recognized by the Ontario Municipal Social Services Association with a Local Municipal Champion Award on May 9, 2023. The award recognizes the work that a consortium of the Counties of Bruce (Lead), Grey, Huron and the City of Stratford did to better support those on Ontario Works to gain access to employment services to help them achieve long-term sustainable employment.

The annual award is provided to municipalities showing leadership in providing more integrated human services. Specifically, in this case, it was a recognition for bringing together Social Assistance and Employment Ontario to generate better employment

outcomes for Ontarians.

“This award recognizes the incredible work of all partners in the region that developed services that prevent those most vulnerable from falling through the cracks. By thinking beyond traditional silos and geographic boundaries we have ensured people get the support they need when they need it,” says Bruce County Warden Chris Peabody, speaking on behalf of the Stratford-Bruce Peninsula Employment Services Consortium.

The Stratford-Bruce Peninsula Employment Services Consortium took a truly unique approach to system transformation by focusing on the integration of Ontario Works, Ontario Disability Support Program, economic development, local employment services providers and the needs of local employers. Through this integration and in launching a new system model on April 1, 2023, as the Service System Manager, and partners can better help marginalized individuals gain access to employment in the region.

Building on the strengths of the existing employment services network, which helps people prepare for and find employment, the [Stratford-Bruce Peninsula Employment Services Consortium](#) has fostered a collaborative, efficient system to meet the needs of diverse local job seekers and employers. After a multistage competitive process in 2022, the Ontario Government announced that the Stratford-Bruce Peninsula Employment Services Consortium has been selected as the regional Employment Services System Manager (SSM).

CONTACT US

Administration Centre

30 Park St., P.O. Box 70
Walkerton, Ontario N0G 2Vo
Tel: 519-881-1291
Toll free: 1-800-265-3005
info@brucecounty.on.ca

Economic Development



Tourism



Library



Museum



[Talk to us](#)

DEPARTMENTS

[Office of the CAO](#)
[Corporate Services](#)
[Transportation and Environmental Services](#)
[Human Resources](#)

COUNTY WEBSITES

[Business to Bruce](#)
[Explore the Bruce](#)
[Bruce County Public Library](#)
[Bruce County Museum & Cultural Centre](#)

USEFUL LINKS

[Road and Bridge Construction and Detours](#)
[Nuclear Innovation Institute](#)
[Bruce County Bids](#)
[Hazardous Waste Collection Schedule](#)

[Library](#)

[Museum](#)

[Health Services](#)

[Planning & Development](#)

[Human Services](#)

[Bruce Remembers](#)

[Museum Online Collections](#)

COVID-19 Information
and Updates

[Road Construction](#)

[EarlyON Child and Family Centres](#)

[Agendas and Minutes](#)

[Employment](#)

[Anaphylaxis \(Nut Aware\) Policy](#)

[Application Links](#)

[File Transfer](#)

[Privacy Policy](#)

[Public Washrooms Map](#)



[Notice of Loss/Injury Claim](#)

© 2022 The County of Bruce. All Rights Reserved.

Any documents found on this page are available in a variety of accessible formats or communication supports upon request. Due to conditions beyond our control, there are some instances where we are unable to provide information in an accessible format (for example, our mapping information). We will be monitoring these sections, and develop an accessible solution as technology improves. If you use assistive technology and the format of any content on this web site interferes with your ability to access the information, please contact the Clerk at 519-881-1291 or LWhite@brucecounty.on.ca

Bruce County provides update on Walkerton Bridge Environmental Assessment Study

Bruce County's Project Team provided an update on the Schedule 'C' Class EA study of the bridge to the Municipality of Brockton at the Tuesday, June 6, 2023 Council Meeting. It was highlighted that an important part of the Environmental Assessment for this project is to consider alternatives and hear feedback from residents, businesses, stakeholders, and municipal partners, which will be shared with Bruce County Council.



June 07, 2023

Bruce County is planning to move forward with plans to replace the Durham Street Bridge, which spans the Saugeen River on Bruce Road 4 in the community of Walkerton, Ontario. This bridge was constructed in 1937 and has served the community for over 85 years.

Environmental Assessment (EA) work for this bridge project commenced in 2021 and will be completed in 2023. Bridge construction is currently scheduled for 2025/2026, pending budget approval by Bruce County Council.

A Public Meeting was held on October 4, 2022, to present project details to members of the public. Following the meeting, input was received from residents and business owners with concerns related to the preferred detour alternative, which is to use local municipal roads to detour traffic during the bridge replacement. A second public meeting is tentatively planned for the summer/fall of 2023.

A Business Information Session was held on May 11, 2023, at the Walkerton Community Centre. Staff from Bruce County Transportation & Environmental Services, BM Ross, the Municipality of Brockton, and the Bruce County Economic Development Department were present and received feedback. There were many representatives from businesses, as well as residents, who attended the meeting.

Bruce County's Project Team provided an update on the Schedule 'C' Class EA study of the bridge to the Municipality of Brockton at the Tuesday, June 6, 2023 Council Meeting. It was highlighted that an important part of the Environmental Assessment for this project is to consider alternatives and hear feedback from residents, businesses, stakeholders, and municipal partners, which will be shared with Bruce County Council.

Through the Schedule 'C' Class EA, the study is looking at 3 Bridge alternatives:

1. Replacement in the same location
2. Repair the Existing Bridge
3. Do Nothing

The preferred alternative at this time, which still needs to be finalized, is Alternative 1) Replacement in the same location.

Recognizing that the roadway would need to be closed to proceed with Alternative 1, the study went further and looked at 4 detour alternatives:

1. Detour using County Roads – North and south routes identified. Truck traffic to be encouraged to use detour.
2. Local Detour - Using Brockton and County Roads with improvements and transit option for pedestrian users. Estimated Detour Cost: \$1.9 million + Engineering.
3. Temporary Vehicle Bridge - South of the existing bridge, connecting McNab Street and Orange Street. Estimated Detour Cost: \$6.3 million + Engineering.
4. Temporary Pedestrian Bridge - South of the Existing bridge, connecting McNab Street and Orange Street. Estimated Detour Cost: \$2.6 million + Engineering.

The approved detour alternative will consider the information received through the EA study, which includes consultation with government agencies, indigenous communities, and interested persons, and includes concerns related to the proposed undertaking, analysis of potential environmental effects, and evaluation of the alternatives.

The public is encouraged to comment on the project's alternatives during this Environmental Assessment period. To date, the project team has received numerous responses from members of the public. The team is collecting this information and will work to address comments before making a final recommendation for alternatives to County Council after the next public meeting, tentatively planned for the summer/fall of 2023. Comments can be submitted directly to the project team via email to Kelly Vader, Environmental Planner at kvader@bmross.net.

Additional Project Information can be found on the Bruce County Website at www.brucecounty.on.ca/WalkertonBridge

CONTACT US

Administration Centre

30 Park St., P.O. Box 70
Walkerton, Ontario NoG 2Vo
Tel: 519-881-1291
Toll free: 1-800-265-3005
info@brucecounty.on.ca

Economic Development



Tourism



Library



Museum



[Talk to us](#)

DEPARTMENTS

[Office of the CAO](#)
[Corporate Services](#)
[Transportation and Environmental Services](#)
[Human Resources](#)
[Library](#)
[Museum](#)
[Health Services](#)
[Planning & Development](#)
[Human Services](#)



COUNTY WEBSITES

[Business to Bruce](#)
[Explore the Bruce](#)
[Bruce County Public Library](#)
[Bruce County Museum & Cultural Centre](#)
[Bruce Remembers](#)
[Museum Online Collections](#)

COVID-19 Information
and Updates

USEFUL LINKS

[Road and Bridge Construction and Detours](#)
[Nuclear Innovation Institute](#)
[Bruce County Bids](#)
[Hazardous Waste Collection Schedule](#)
[Road Construction](#)
[EarlyON Child and Family Centres](#)
[Agendas and Minutes](#)
[Employment](#)
[Anaphylaxis \(Nut Aware\) Policy](#)
[Application Links](#)
[File Transfer](#)
[Privacy Policy](#)
[Public Washrooms Map](#)



[Notice of Loss/Injury Claim](#)

Any documents found on this page are available in a variety of accessible formats or communication supports upon request. Due to conditions beyond our control, there are some instances where we are unable to provide information in an accessible format (for example, our mapping information). We will be monitoring these sections, and develop an accessible solution as technology improves. If you use assistive technology and the format of any content on this web site interferes with your ability to access the information, please contact the Clerk at 519-881-1291 or LWhite@brucecounty.on.ca



≡ MENU

Bruce County Rail Trail Corridor and Surface Improvements in Saugeen Shores

The Bruce County Rail Trail will be undergoing corridor and surface improvements from June 12 to June 30, 2023, between Bruce Road 40 and Mill Creek Trestle Bridge in Port Elgin (west of Sideroad 13/14). Work will include corridor widening and the application of aggregate material to improve trail accessibility. Trail access may be impeded, and temporary closures may be required at times.



BRUCE

county

June 07, 2023

The Bruce County Rail Trail will be undergoing corridor and surface improvements from June 12 to June 30, 2023, between Bruce Road 40 and Mill Creek Trestle Bridge in Port Elgin (west of Sideroad 13/14). Work will include corridor widening and the application of aggregate material to improve trail accessibility. Trail access may be impeded, and temporary closures may be required at times.

The Bruce County Rail Trail is a multi-use trail that is approximately 80km long and extends from Port Elgin to the Huron-Bruce Road and from Port Elgin to Bruce Nuclear Power. The rail trail is a significant trail artery that connects several

community trails through the towns of Port Elgin, Kincardine, Paisley, Walkerton and Mildmay.

Thank you for your patience and understanding as we complete this important infrastructure work in Bruce County.

Discover more about [Bruce County Trails](#).

Discover more about [Transportation & Environmental Services](#).

CONTACT US

Administration Centre

30 Park St., P.O. Box 70
Walkerton, Ontario N0G 2V0
Tel: 519-881-1291
Toll free: 1-800-265-3005
info@brucecounty.on.ca

Economic Development



Tourism



Library



Museum



[Talk to us](#)

DEPARTMENTS

[Office of the CAO](#)

[Corporate Services](#)

[Transportation and Environmental Services](#)

[Human Resources](#)

[Library](#)

[Museum](#)

[Health Services](#)

[Planning & Development](#)

[Human Services](#)

COUNTY WEBSITES

[Business to Bruce](#)

[Explore the Bruce](#)

[Bruce County Public Library](#)

[Bruce County Museum & Cultural Centre](#)

[Bruce Remembers](#)

[Museum Online Collections](#)

[COVID-19 Information and Updates](#)

USEFUL LINKS

[Road and Bridge Construction and Detours](#)

[Nuclear Innovation Institute](#)

[Bruce County Bids](#)

[Hazardous Waste Collection Schedule](#)

[Road Construction](#)

[EarlyON Child and Family Centres](#)

[Agendas and Minutes](#)

[Employment](#)

[Anaphylaxis \(Nut Aware\) Policy](#)

[Application Links](#)

[File Transfer](#)

[Privacy Policy](#)

[Public Washrooms Map](#)



[Notice of Loss/Injury Claim](#)

© 2022 The County of Bruce. All Rights Reserved.

Any documents found on this page are available in a variety of accessible formats or communication supports upon request. Due to conditions beyond our control, there are some instances where we are unable to provide information in an accessible format (for example, our mapping information). We will be monitoring these sections, and develop an accessible solution as technology improves. If you use assistive technology and the format of any content on this web site interferes with your ability to access the information, please contact the Clerk at 519-881-1291 or LWhite@brucecounty.on.ca



≡ MENU

Join Bruce County's Long Term Care Team!

Bruce County is now recruiting nurses, personal support workers, recreation and leisure aides, housekeeping aides, and food service staff for our wonderful long term care homes in Walkerton and Wiarnton.



BRUCE

county

June 08, 2023

Bruce County is now recruiting nurses, personal support workers, recreation and leisure aides, housekeeping aides, and food service staff for our wonderful long term care homes in Walkerton and Wiarnton.

Long Term Care Workers do very important work in our community, caring for our senior residents. Their efforts ensure Bruce County's long term care homes are where residents live with dignity, safety, security, and comfort. Join our amazing team and help us put Residents First, Every Day, Every Way.

Explore a mix of long term care career opportunities to fit your lifestyle at www.brucecounty.on.ca/jobs.

Career Opportunities at Gateway Haven in Wiarnton, Ontario:

- Registered Nurse (Full-Time) - eligible for \$1,000 signing bonus
- Registered Practical Nurse (Full-Time) - eligible for \$1,000 signing bonus
- Personal Support Worker (Full-Time) - eligible for \$1,000 signing bonus
- Cook (Casual) – eligible for \$1,000 signing bonus
- Food Service Worker (Casual) - eligible for \$1,000 signing bonus

Career Opportunities at Brucelea Haven in Walkerton, Ontario:

- Registered Nurse (Full-Time) - eligible for \$1,000 signing bonus
- Registered Practical Nurse (Full-Time) - eligible for \$1,000 signing bonus
- Personal Support Worker (Full-Time) - eligible for \$1,000 signing bonus
- Recreation & Leisure Aide (Full-Time) - eligible for \$1,000 signing bonus
- Cook (Casual) - eligible for \$1,000 signing bonus
- Food Service Worker (Casual) - eligible for \$1,000 signing bonus

Apply online: www.brucecounty.on.ca/jobs.

Apply via email: Send your resume to employment@brucecounty.on.ca

Additional Information about Living and Working in Bruce County:

- Find what you've been looking for: <https://living.brucecounty.on.ca/newcomer>
- Make Bruce County your home: <https://living.brucecounty.on.ca/relocate>

Your adventure with Bruce County starts here!

CONTACT US

Administration Centre

30 Park St., P.O. Box 70
Walkerton, Ontario N0G 2V0
Tel: 519-881-1291
Toll free: 1-800-265-3005
info@brucecounty.on.ca

Economic Development

f

Tourism

f **t**

Library

f **t**

Museum

f **t**

[Talk to us](#)

DEPARTMENTS

[Office of the CAO](#)

[Corporate Services](#)

[Transportation and Environmental Services](#)

[Human Resources](#)

[Library](#)

[Museum](#)

[Health Services](#)

[Planning & Development](#)

[Human Services](#)

BRUCE & GREY
COMMUNITY INFORMATION



[Notice of Loss/Injury Claim](#)

COUNTY WEBSITES

[Business to Bruce](#)

[Explore the Bruce](#)

[Bruce County Public Library](#)

[Bruce County Museum & Cultural Centre](#)

[Bruce Remembers](#)

[Museum Online Collections](#)

COVID-19 Information
and Updates

USEFUL LINKS

[Road and Bridge Construction and Detours](#)

[Nuclear Innovation Institute](#)

[Bruce County Bids](#)

[Hazardous Waste Collection Schedule](#)

[Road Construction](#)

[EarlyON Child and Family Centres](#)

[Agendas and Minutes](#)

[Employment](#)

[Anaphylaxis \(Nut Aware\) Policy](#)

[Application Links](#)

[File Transfer](#)

[Privacy Policy](#)

[Public Washrooms Map](#)

© 2022 The County of Bruce. All Rights Reserved.

Any documents found on this page are available in a variety of accessible formats or communication supports upon request. Due to conditions beyond our control, there are some instances where we are unable to provide information in an accessible format (for example, our mapping information). We will be monitoring these sections, and develop an accessible solution as technology improves. If you use assistive technology and the format of any content on this web site interferes with your ability to access the information, please contact the Clerk at 519-881-1291 or LWhite@brucecounty.on.ca



≡ MENU

Bruce County Rail Trail Corridor and Surface Improvements in Saugeen Shores

The Bruce County Rail Trail will be undergoing corridor and surface improvements from June 12 to June 30, 2023, between Bruce Road 40 and Mill Creek Trestle Bridge in Port Elgin (west of Sideroad 13/14). Work will include corridor widening and the application of aggregate material to improve trail accessibility. Trail access may be impeded, and temporary closures may be required at times.



BRUCE

county

June 07, 2023

The Bruce County Rail Trail will be undergoing corridor and surface improvements from June 12 to June 30, 2023, between Bruce Road 40 and Mill Creek Trestle Bridge in Port Elgin (west of Sideroad 13/14). Work will include corridor widening and the application of aggregate material to improve trail accessibility. Trail access may be impeded, and temporary closures may be required at times.

The Bruce County Rail Trail is a multi-use trail that is approximately 80km long and extends from Port Elgin to the Huron-Bruce Road and from Port Elgin to Bruce Nuclear Power. The rail trail is a significant trail artery that connects several

community trails through the towns of Port Elgin, Kincardine, Paisley, Walkerton and Mildmay.

Thank you for your patience and understanding as we complete this important infrastructure work in Bruce County.

Discover more about [Bruce County Trails](#).

Discover more about [Transportation & Environmental Services](#).

CONTACT US

Administration Centre

30 Park St., P.O. Box 70
Walkerton, Ontario N0G 2V0
Tel: 519-881-1291
Toll free: 1-800-265-3005
info@brucecounty.on.ca

Economic Development



Tourism



Library



Museum



[Talk to us](#)

DEPARTMENTS

[Office of the CAO](#)

[Corporate Services](#)

[Transportation and Environmental Services](#)

[Human Resources](#)

[Library](#)

[Museum](#)

[Health Services](#)

[Planning & Development](#)

[Human Services](#)

COUNTY WEBSITES

[Business to Bruce](#)

[Explore the Bruce](#)

[Bruce County Public Library](#)

[Bruce County Museum & Cultural Centre](#)

[Bruce Remembers](#)

[Museum Online Collections](#)

[COVID-19 Information and Updates](#)

USEFUL LINKS

[Road and Bridge Construction and Detours](#)

[Nuclear Innovation Institute](#)

[Bruce County Bids](#)

[Hazardous Waste Collection Schedule](#)

[Road Construction](#)

[EarlyON Child and Family Centres](#)

[Agendas and Minutes](#)

[Employment](#)

[Anaphylaxis \(Nut Aware\) Policy](#)

[Application Links](#)

[File Transfer](#)

[Privacy Policy](#)

[Public Washrooms Map](#)

[Notice of Loss/Injury Claim](#)

© 2022 The County of Bruce. All Rights Reserved.

Any documents found on this page are available in a variety of accessible formats or communication supports upon request. Due to conditions beyond our control, there are some instances where we are unable to provide information in an accessible format (for example, our mapping information). We will be monitoring these sections, and develop an accessible solution as technology improves. If you use assistive technology and the format of any content on this web site interferes with your ability to access the information, please contact the Clerk at 519-881-1291 or LWhite@brucecounty.on.ca



☰ MENU

BCM&CC to offer free museum admission for Indigenous People's Day, June 21

The Bruce County Museum & Cultural Centre will offer free admission to all visitors on June 21, 2023, in honor of Indigenous Peoples' Day.



June 14, 2023

The Bruce County Museum & Cultural Centre will offer free admission to all visitors on June 21, 2023, in honor of Indigenous Peoples' Day.

Indigenous Peoples' Day is a significant occasion that recognizes and celebrates the rich cultures, histories, and contributions of Indigenous peoples across the world. By providing free access, the BCM&CC aims to foster greater understanding, appreciation, and engagement with the Indigenous heritage present in the Bruce County region.

On June 21, visitors will have the opportunity to explore the Bruce County Museum & Cultural Centre's captivating displays and exhibits, including the Anishnaabwe Endaat Gallery, which showcases the history, stories and experiences of local Indigenous

communities to present day.

Details of the Event:

Date: Wednesday, June 21, 2023

Time: 10:00 AM to 5:00 PM

Location: Bruce County Museum & Cultural Centre, 33 Victoria Street North, Southampton

Admission: Free

All individuals, families, and communities are encouraged to visit the Bruce County Museum & Cultural Centre on June 21 to commemorate Indigenous Peoples' Day and experience the diverse cultural heritage it represents.

For more information, please visit brucemuseum.ca.

About the Bruce County Museum & Cultural Centre

The Bruce County Museum & Cultural Centre offers adult and children's programming, special events, and is home to the Bruce County Archives & Research Room. Our mandate is to preserve and make available the documentary heritage of Bruce County.

CONTACT US

Administration Centre

30 Park St., P.O. Box 70
Walkerton, Ontario N0G 2V0
Tel: 519-881-1291
Toll free: 1-800-265-3005
info@brucecounty.on.ca

Economic Development

f

Tourism

f **🐦**

Library

f **🐦**

Museum

f **🐦**

[Talk to us](#)

DEPARTMENTS

[Office of the CAO](#)

[Corporate Services](#)

[Transportation and Environmental Services](#)

COUNTY WEBSITES

[Business to Bruce](#)

[Explore the Bruce](#)

[Bruce County Public Library](#)

USEFUL LINKS

[Road and Bridge Construction and Detours](#)

[Nuclear Innovation Institute](#)

[Bruce County Bids](#)

[Hazardous Waste Collection Schedule](#)

[Human Resources](#)

[Library](#)

[Museum](#)

[Health Services](#)

[Planning & Development](#)

[Human Services](#)

[Bruce County Museum & Cultural Centre](#)

[Bruce Remembers](#)

[Museum Online Collections](#)

[Road Construction](#)

[EarlyON Child and Family Centres](#)

[Agendas and Minutes](#)

[Employment](#)

[Anaphylaxis \(Nut Aware\) Policy](#)

[Application Links](#)

[File Transfer](#)

[Privacy Policy](#)

[Public Washrooms Map](#)

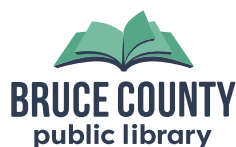
COVID-19 Information
and Updates



[Notice of Loss/Injury Claim](#)

© 2022 The County of Bruce. All Rights Reserved.

Any documents found on this page are available in a variety of accessible formats or communication supports upon request. Due to conditions beyond our control, there are some instances where we are unable to provide information in an accessible format (for example, our mapping information). We will be monitoring these sections, and develop an accessible solution as technology improves. If you use assistive technology and the format of any content on this web site interferes with your ability to access the information, please contact the Clerk at 519-881-1291 or LWhite@brucecounty.on.ca



Home > Chantry Island Chambettes Support BCPL's Me, You, and a Book Too

Chantry Island Chambettes Support BCPL's Me, You, and a Book Too

Chantry Island Chambettes helped propel early literacy with Bruce County Public Library (BCPL) through a generous donation to their ongoing Me, You, and a Book Too initiative.

Me, You and a Book Too is a free baby bag that has been running since 2016. It has been one of the Library's more popular programs and is very close to reaching an incredible milestone of 1,500 bags given to Bruce County families. These bags contain literacy materials like books, posters, and baby's first library card inside reusable bags.

Chantry Island Chambette's donation of \$1,000 will help Bruce County Public Library keep up with the bags' ongoing popularity. This generous donation will be used to purchase new board books to include in the bags. Library staff carefully choose books to ensure that parents receive quality literacy materials.

"Literacy begins at birth, and Bruce County Public Library wants to give Bruce County babies the necessary building blocks to help literacy flourish. We are always so happy to hear from families who have found this initiative to positively impact their growing families," says Program Coordinator Nancy Kuhl.

Me, You and a Book Too bags can be picked up from your local Library Branch. To learn more, visit our website at <https://library.brucecounty.on.ca/me-you-and-a-book-too>.



Show Me How

BCPL Program Coordinator Nancy Kuhl and Chambette Gay Ashdown with one of BCPL's littlest patrons. Port Elgin Branch.



Any documents found on this page are available in a variety of accessible formats upon request. To make a request, contact the Clerk at 519-881-1291 or info@brucecounty.on.ca



 Show Me How

So what is there to discover?

Bruce County Public Library is a vibrant hub and pillar of the community. From eBooks to fishing rods, video games to educational workshops, Bruce County Public Library offers something for everyone.

© 2023 The County of Bruce.
All Rights Reserved.

Search Site



☰ MENU

Council / Committee Meetings – Thursday, June 15, 2023

Bruce County Council and Committees met on June 15, 2023 beginning at 9:30 AM in the Council Chambers and virtually through Teams. Video recordings of the meetings can be reviewed at www.brucecounty.on.ca/government/agendas-and-minutes



June 16, 2023

Planning & Development Committee

Committee approved Local Official Plan Amendment L-2023-003 (1596666 Ontario Ltd. c/o Becky Maus). [Report](#)

Executive Committee

Committee adopted the Bruce County Strategic Plan 2023-2026. [Report](#)

Transportation & Environmental Services Committee

Committee welcomed new Director of Transportation & Environmental Services Adam Stanley.

Committee approved, in advance of the 2024 capital budget approval, to commit to the purchase of one tandem axle cab and chassis snowplow with a proposed budget of \$430,000. [Report](#)

Committee received an update on the Durham Street Bridge Schedule 'C' Environmental Assessment and approved to have staff provide details on temporary bridge options and wooden bridge construction. [Report](#)

Corporate Services Committee

Committee received an update on the Development Charges Study. [Report](#)

This publication identifies highlights from recent Bruce County Council and Committee meetings. Bruce County's Office of the CAO maintains complete agendas and minutes from all Council and Committee meetings, which can be reviewed at www.brucecounty.on.ca/government/agendas-and-minutes

CONTACT US

Administration Centre

30 Park St., P.O. Box 70
Walkerton, Ontario N0G 2V0
Tel: 519-881-1291
Toll free: 1-800-265-3005
info@brucecounty.on.ca

Economic Development

f

Tourism

f **t**

Library

f **t**

Museum

f **t**

[Talk to us](#)

DEPARTMENTS

[Office of the CAO](#)

[Corporate Services](#)

[Transportation and Environmental Services](#)

[Human Resources](#)

[Library](#)

[Museum](#)

[Health Services](#)

[Planning & Development](#)

COUNTY WEBSITES

[Business to Bruce](#)

[Explore the Bruce](#)

[Bruce County Public Library](#)

[Bruce County Museum & Cultural Centre](#)

[Bruce Remembers](#)

[Museum Online Collections](#)

USEFUL LINKS

[Road and Bridge Construction and Detours](#)

[Nuclear Innovation Institute](#)

[Bruce County Bids](#)

[Hazardous Waste Collection Schedule](#)

[Road Construction](#)

[EarlyON Child and Family Centres](#)

[Agendas and Minutes](#)

[Employment](#)

[Anaphylaxis \(Nut Aware\) Policy](#)

[Human Services](#)

[Application Links](#)

[File Transfer](#)

[Privacy Policy](#)

[Public Washrooms Map](#)



COVID-19 Information
and Updates



[Notice of Loss/Injury Claim](#)

© 2022 The County of Bruce. All Rights Reserved.

Any documents found on this page are available in a variety of accessible formats or communication supports upon request. Due to conditions beyond our control, there are some instances where we are unable to provide information in an accessible format (for example, our mapping information). We will be monitoring these sections, and develop an accessible solution as technology improves. If you use assistive technology and the format of any content on this web site interferes with your ability to access the information, please contact the Clerk at 519-881-1291 or LWhite@brucecounty.on.ca



≡ MENU

Bruce County Council Approves 2023-2026 Strategic Plan

On Thursday, June 15, 2023, Bruce County Council adopted the new Bruce County 2023-2026 Strategic Plan. The new four-year strategic plan is responsive to the evolving needs of the community, takes into account new trends and emerging issues, and focuses on promoting sustainable growth, enhancing community engagement, and fostering innovation and collaboration.



June 16, 2023

On Thursday, June 15, 2023, Bruce County Council adopted the new Bruce County 2023-2026 Strategic Plan. The new four-year strategic plan is responsive to the evolving needs of the community, takes into account new trends and emerging issues, and focuses on promoting sustainable growth, enhancing community engagement, and fostering innovation and collaboration.

Bruce County's 2023-2026 Strategic Plan is built on four strategic pillars, through which, the County aims to strengthen the community, enhance and grow partnerships, strengthen capacity to deliver, and increase capacity to lead in sustainable environmental practices.

The County’s vision is to create a welcoming, innovative, and thriving community that prioritizes the well-being of current and future generations. To achieve this vision, the County has developed five core values that guide all decisions and actions: service excellence, a welcoming community, good governance, environmental stewardship, and financial sustainability.

To achieve the plan’s goals, the County has outlined specific objectives and actions under each pillar. For example, the County will increase housing options and encourage innovative solutions to build a strong and inclusive community. The County will also work collaboratively with municipal partners and integrate feedback from stakeholders to improve services continually.

“We invite you to join us on this exciting journey as we work towards a brighter future for Bruce County,” said Chief Administrative Officer Derrick Thomson. “Together, we can create a sustainable community that is welcoming, innovative, and thriving.”

“As we move forward with our Strategic Plan, we are committed to fostering innovation and sustainable growth while ensuring that our natural environment is protected for future generations. We recognize the importance of building a strong and inclusive community, enhancing, and growing partnerships, and strengthening our capacity to deliver excellent services to residents, businesses, and visitors,” said Warden Chris Peabody. “I would like to extend my sincere gratitude to all those who contributed to the development of this plan, including community members, staff, and Council, for your unwavering commitment to our community’s future.”

Bruce County’s updated Strategic Plan is a living document that will be closely monitored and measured as the community works together to turn the outlined goals into reality. It is intended to bridge this term of Council with the next and is a commitment to ensuring Bruce County remains a great place to live, work and play.

Thank you for participating in shaping the future of the County.

Discover more about the 2023-2026 Strategic Plan at www.brucecounty.on.ca/StrategicPlan.

For more information on Bruce County’s 2023-2026 Strategic Plan, please contact Corporate Strategic Initiatives Specialist Matthew Meade at mmeade@brucecounty.on.ca.

CONTACT US

Administration Centre

30 Park St., P.O. Box 70
Walkerton, Ontario N0G 2Vo
Tel: 519-881-1291
Toll free: 1-800-265-3005
info@brucecounty.on.ca

Economic Development

f

Tourism

f 

Library

f 

Museum

f 

[Talk to us](#)

DEPARTMENTS

[Office of the CAO](#)

[Corporate Services](#)

[Transportation and Environmental Services](#)

[Human Resources](#)

[Library](#)

[Museum](#)

[Health Services](#)

[Planning & Development](#)

[Human Services](#)



[Notice of Loss/Injury Claim](#)

COUNTY WEBSITES

[Business to Bruce](#)

[Explore the Bruce](#)

[Bruce County Public Library](#)

[Bruce County Museum & Cultural Centre](#)

[Bruce Remembers](#)

[Museum Online Collections](#)

COVID-19 Information
and Updates

USEFUL LINKS

[Road and Bridge Construction and Detours](#)

[Nuclear Innovation Institute](#)

[Bruce County Bids](#)

[Hazardous Waste Collection Schedule](#)

[Road Construction](#)

[EarlyON Child and Family Centres](#)

[Agendas and Minutes](#)

[Employment](#)

[Anaphylaxis \(Nut Aware\) Policy](#)

[Application Links](#)

[File Transfer](#)

[Privacy Policy](#)

[Public Washrooms Map](#)

© 2022 The County of Bruce. All Rights Reserved.

Any documents found on this page are available in a variety of accessible formats or communication supports upon request. Due to conditions beyond our control, there are some instances where we are unable to provide information in an accessible format (for example, our mapping information). We will be monitoring these sections, and develop an accessible solution as technology improves. If you use assistive technology and the format of any content on this web site interferes with your ability to access the information, please contact the Clerk at 519-881-1291 or LWhite@brucecounty.on.ca



≡ MENU

Municipality of Kincardine and Bruce County Partner to Provide Funding for Vandalized Businesses

The Municipality of Kincardine and the County of Bruce are pleased to announce funding to support businesses recently impacted by vandalism in Kincardine's lakeside downtown.



SPRUCE the BRUCE

June 20, 2023

The Municipality of Kincardine and the County of Bruce are pleased to announce funding to support businesses recently impacted by vandalism in Kincardine's lakeside downtown.

At the June 19th Municipality of Kincardine Council meeting, Council approved a budget of \$5,500 to help support the costs of storefront window replacement. The County of Bruce is also contributing \$5,500 in funding, allowing businesses to apply for up to \$1,000 in total. Funding will be administered by the County of Bruce through

[Spruce the Bruce, a community improvement grant program.](#)

Mayor Craig states: "Council is providing direct, financial support to the businesses impacted by a senseless act of vandalism.

We know just how important our downtown core is to our community. By supporting our small business owners with the cost of repairs, we hope to help them get ahead.”

“Bruce County is pleased to partner with the Municipality of Kincardine to support affected businesses when they need it most,” says Jeffrey Loney, manager of economic development at Bruce County. “Spruce the Bruce is a program designed to help build healthy and vibrant communities by offering resources to maintain and grow commercial spaces. We are happy to adapt the program to make this happen.”

Thank you to our community for showing support to businesses by helping to clean up broken glass, provide food to business owners, paint beautiful artwork on plywood window coverings, and provide entertainment during this challenging time.

The Municipality encourages residents and visitors to continue shopping downtown. It’s the best way to help local businesses prosper during the Downtown Dig.

CONTACT US

Administration Centre

30 Park St., P.O. Box 70
Walkerton, Ontario N0G 2V0
Tel: 519-881-1291
Toll free: 1-800-265-3005
info@brucecounty.on.ca

Economic Development



Tourism



Library



Museum



[Talk to us](#)

DEPARTMENTS

[Office of the CAO](#)
[Corporate Services](#)
[Transportation and Environmental Services](#)
[Human Resources](#)
[Library](#)
[Museum](#)
[Health Services](#)

COUNTY WEBSITES

[Business to Bruce](#)
[Explore the Bruce](#)
[Bruce County Public Library](#)
[Bruce County Museum & Cultural Centre](#)
[Bruce Remembers](#)
[Museum Online Collections](#)

USEFUL LINKS

[Road and Bridge Construction and Detours](#)
[Nuclear Innovation Institute](#)
[Bruce County Bids](#)
[Hazardous Waste Collection Schedule](#)
[Road Construction](#)
[EarlyON Child and Family Centres](#)
[Agendas and Minutes](#)
[Employment](#)
[Anaphylaxis \(Nut Aware\) Policy](#)

[Planning & Development](#)

[Human Services](#)

BRUCE & GREY
COMMUNITY INFORMATION

COVID-19 Information
and Updates

[Application Links](#)

[File Transfer](#)

[Privacy Policy](#)

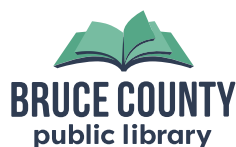
[Public Washrooms Map](#)



[Notice of Loss/Injury Claim](#)

© 2022 The County of Bruce. All Rights Reserved.

Any documents found on this page are available in a variety of accessible formats or communication supports upon request. Due to conditions beyond our control, there are some instances where we are unable to provide information in an accessible format (for example, our mapping information). We will be monitoring these sections, and develop an accessible solution as technology improves. If you use assistive technology and the format of any content on this web site interferes with your ability to access the information, please contact the Clerk at 519-881-1291 or LWhite@brucecounty.on.ca



Home > Bruce County Public Library Kincardine Branch Temporary Closure for Renovations

Bruce County Public Library Kincardine Branch Temporary Closure for Renovations

Bruce County Public Library will temporarily close its Kincardine Branch for scheduled renovations. Starting Monday, June 26, and continuing until Friday, July 7, the Kincardine Branch will be closed to the public while the Municipality of Kincardine updates the flooring, and a new circulation desk is installed.

These updates aim to enhance the overall Branch experience for their patrons. The new flooring will provide a fresh look and ensure improved durability and ease of maintenance. Additionally, a new circulation desk will help with the overall efficiency of the Kincardine Branch.

During the closure, Library patrons are encouraged to visit nearby Branches throughout Bruce County, where you can continue to access an extensive collection of books and choose from an ever-growing selection of [non-traditional items](#), including board games, Ukuleles, tech kits and much more. The Library's [online resources](#) remain available 24/7, allowing patrons to continue to borrow eBooks and eAudiobooks, and stream online movies and shows through apps like Kanopy and CBC Corner.

Bruce County Public Library apologizes to the public for any inconvenience this closure may cause. They look forward to welcoming everyone back on Saturday, July 8, when the Branch reopens. You can visit the [Bruce County Public Library website](#) for more information and updates regarding the Kincardine Branch closure or find hours and information for alternate Branches nearby.



! Show Me How



Any documents found on this page are available in a variety of accessible formats upon request. To make a request, contact the Clerk at 519-881-1291 or info@brucecounty.on.ca



So what is there to discover?

Bruce County Public Library is a vibrant hub and pillar of the community. From eBooks to fishing rods, video games to educational workshops, Bruce County Public Library offers something for everyone.

 Show Me How

© 2023 The County of Bruce.
All Rights Reserved.

Search Site



Home

> New Coding Tools Come to Bruce County Public Library Thanks to The Society of United Professionals

New Coding Tools Come to Bruce County Public Library Thanks to The Society of United Professionals

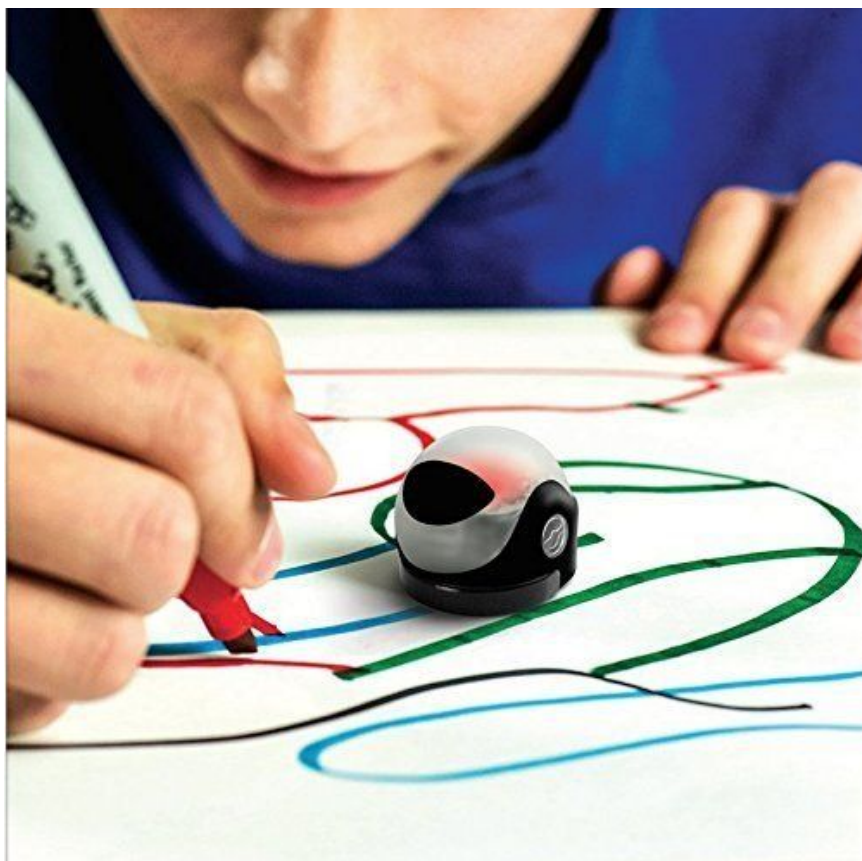
Bruce County Public Library has refreshed its Ozobots collection thanks to a generous donation from the Society of United Professionals. The Society has been a long-running supporter of Bruce County Public Library with past donations towards one of their 3D Printers, the Bookmobile project, and the first round of Ozobots in 2015.

Ozobots are small robots that integrate coding and play using a hands-on approach. They do not require an app or device and respond to their colour-coded markers. The Ozobots follow the line drawn on printer paper and change their behaviour depending on the line's colour. Due to the simplicity of their nature and the lack of additional technology required to run them, Ozobots are the most accessible introduction to coding for children.

"Ozobots enrich and grow our STEAM programs and help inspire patrons through a fun and interactive introduction to coding and problem-solving. We are incredibly grateful to the Society of United Professionals for their continued generosity and ongoing support of tech-based Library programming," said Digital Initiatives Coordinator Jeremy Clark.

The previous collection of Ozobots has been added to BCPL's non-traditional items for patrons to check out and learn at home, while the 12 new robots will be used for in-Branch programs and special events throughout Bruce County. Interested in learning more about STEAM-based items available for borrowing with your BCPL Library Card?

Visit their website at <https://library.brucecounty.on.ca/non-traditional-items> for the most up-to-date list and to reserve yours for pick up at your local Branch.



! Show Me How



Any documents found on this page are available in a variety of accessible formats upon request. To make a request, contact the Clerk at 519-881-1291 or info@brucecounty.on.ca



So what is there to discover?

Bruce County Public Library is a vibrant hub and pillar of the community. From eBooks to fishing rods, video games to educational workshops, Bruce County Public Library offers something for everyone.

 Show Me How

© 2023 The County of Bruce.
All Rights Reserved.

Search Site



☰ MENU

County Administration Buildings Closed for 2023 Canada Day Long Weekend

Please take notice that the Bruce County Administration Centre in Walkerton, the Lakeshore Hub in Port Elgin, the Peninsula Hub in Wiarton, and the Penetangore Hub in Kincardine will be closed from Saturday, July 1 to Monday, July 3 (Canada Day Long Weekend). Virtual customer service and in-person service will be available again on Tuesday, July 4 at 8:30 AM.



BRUCE
county

June 27, 2023

Please take notice that the Bruce County Administration Centre in Walkerton, the Lakeshore Hub in Port Elgin, the Peninsula Hub in Wiarton, and the Penetangore Hub in Kincardine will be closed from Saturday, July 1 to Monday, July 3 (Canada Day Long Weekend). Virtual customer service and in-person service will be available again on Tuesday, July 4 at 8:30 AM.

Bruce County Public Library Branches will be closed on Saturday, July 1. Library Branches will be open for regular hours on Sunday, July 2 and Monday, July 3. [Online resources](#) are available 24/7.

Bruce County Museum & Cultural Centre will be open from 10:00 AM to 5:00 PM on Saturday, July 1 (Archives close at 4:30 PM), 1:00 PM to 5:00 PM on Sunday, July 2 (Archives are closed on July 2), and 10:00 AM to 5:00 PM on Monday, July 3 (Archives close at 4:30 PM). www.brucemuseum.ca

EarlyON Child and Family Centre programming will be closed from Saturday, July 1 to Monday, July 3. The EarlyON Facebook page and schedule are available to view [online](#).

For essential services, please call 211 to assist with accessing community services and support. The service is 24/7 and multilingual interpretation is available.

For emergencies, please call 911. For less serious incidents, report online by visiting opp.ca/reporting.

CONTACT US

Administration Centre

30 Park St., P.O. Box 70
Walkerton, Ontario NoG 2Vo
Tel: 519-881-1291
Toll free: 1-800-265-3005
info@brucecounty.on.ca

Economic Development

f

Tourism

f **t**

Library

f **t**

Museum

f **t**

[Talk to us](#)

DEPARTMENTS

[Office of the CAO](#)
[Corporate Services](#)
[Transportation and Environmental Services](#)
[Human Resources](#)
[Library](#)
[Museum](#)
[Health Services](#)
[Planning & Development](#)
[Human Services](#)

COUNTY WEBSITES

[Business to Bruce](#)
[Explore the Bruce](#)
[Bruce County Public Library](#)
[Bruce County Museum & Cultural Centre](#)
[Bruce Remembers](#)
[Museum Online Collections](#)

USEFUL LINKS

[Road and Bridge Construction and Detours](#)
[Nuclear Innovation Institute](#)
[Bruce County Bids](#)
[Hazardous Waste Collection Schedule](#)
[Road Construction](#)
[EarlyON Child and Family Centres](#)
[Agendas and Minutes](#)
[Employment](#)
[Anaphylaxis \(Nut Aware\) Policy](#)
[Application Links](#)
[File Transfer](#)



COVID-19 Information and Updates



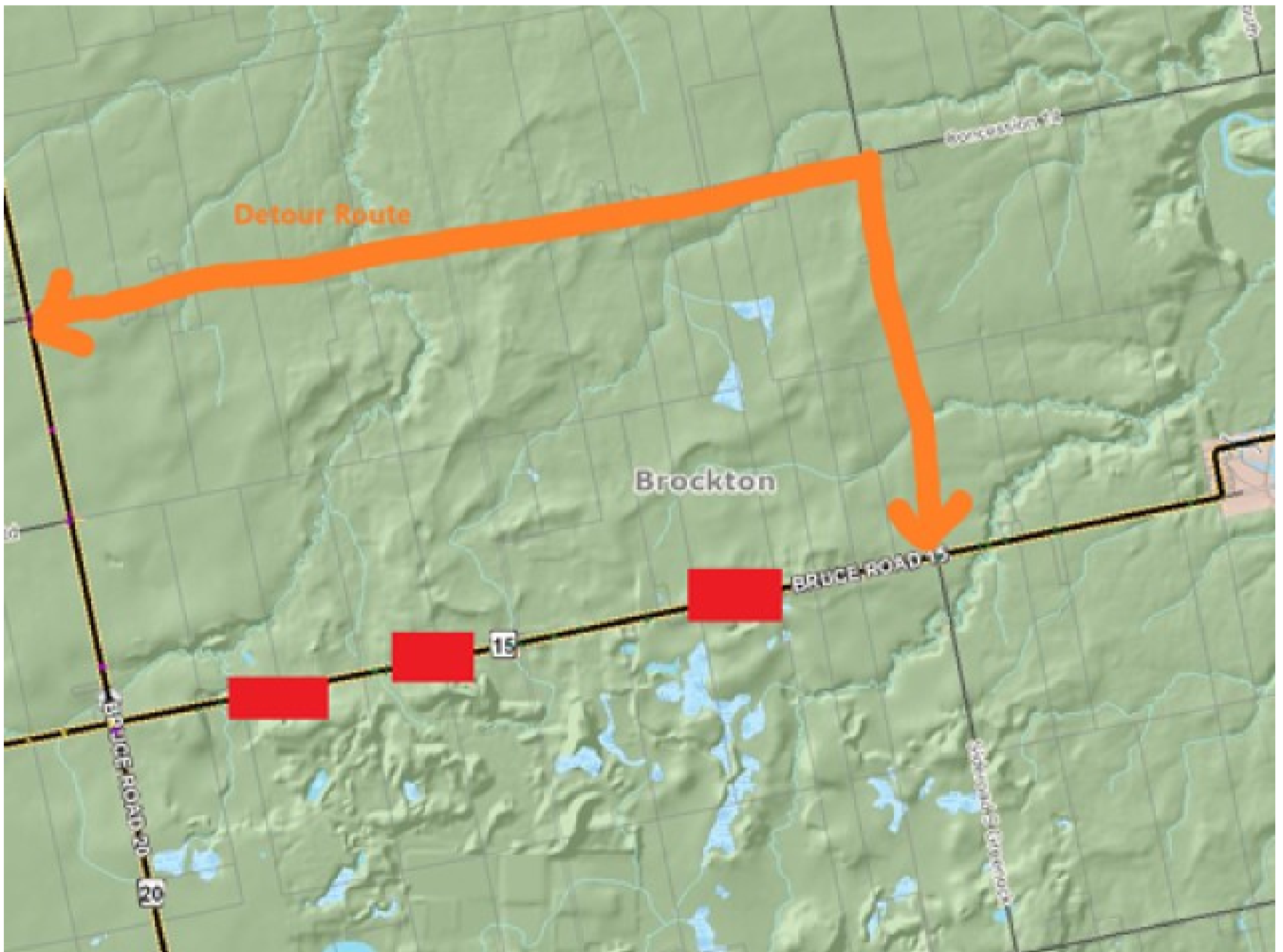
[Notice of Loss/Injury Claim](#)

© 2022 The County of Bruce. All Rights Reserved.

Any documents found on this page are available in a variety of accessible formats or communication supports upon request. Due to conditions beyond our control, there are some instances where we are unable to provide information in an accessible format (for example, our mapping information). We will be monitoring these sections, and develop an accessible solution as technology improves. If you use assistive technology and the format of any content on this web site interferes with your ability to access the information, please contact the Clerk at 519-881-1291 or LWhite@brucecounty.on.ca

NOTICE: Upcoming Closure of Bruce Road 15 West of Pinkerton

Please take notice that Bruce Road 15, from Sideroad 5 Greenock to Bruce Road 20, will be closed on Tuesday, July 4, and from Monday, July 10 to Friday, July 14, for culvert replacement work.



June 27, 2023

Please take notice that Bruce Road 15, from Sideroad 5 Greenock to Bruce Road 20, will be closed on Tuesday, July 4, and from Monday, July 10 to Friday, July 14, for culvert replacement work.

A detour route will be in place on Sideroad 5 Greenock north to Concession 14 and west to Bruce Road 20, during the construction period. Signage will be in place.

Thank you for your patience and understanding as we complete the replacement of these culverts. Culverts are a critical component of drainage infrastructure. Their function is critical to ensuring that stormwater is safely conveyed and flooding is minimized during inclement weather.

Discover more about [Road Construction in Bruce County](#).

Discover more about [Transportation & Environmental Services](#).

CONTACT US

Administration Centre

30 Park St., P.O. Box 70
Walkerton, Ontario N0G 2V0
Tel: 519-881-1291
Toll free: 1-800-265-3005
info@brucecounty.on.ca

Economic Development

f

Tourism

f 

Library

f 

Museum

f 

[Talk to us](#)

DEPARTMENTS

[Office of the CAO](#)
[Corporate Services](#)
[Transportation and Environmental Services](#)
[Human Resources](#)
[Library](#)
[Museum](#)
[Health Services](#)
[Planning & Development](#)
[Human Services](#)

COUNTY WEBSITES

[Business to Bruce](#)
[Explore the Bruce](#)
[Bruce County Public Library](#)
[Bruce County Museum & Cultural Centre](#)
[Bruce Remembers](#)
[Museum Online Collections](#)

[COVID-19 Information and Updates](#)

USEFUL LINKS

[Road and Bridge Construction and Detours](#)
[Nuclear Innovation Institute](#)
[Bruce County Bids](#)
[Hazardous Waste Collection Schedule](#)
[Road Construction](#)
[EarlyON Child and Family Centres](#)
[Agendas and Minutes](#)
[Employment](#)
[Anaphylaxis \(Nut Aware\) Policy](#)
[Application Links](#)
[File Transfer](#)
[Privacy Policy](#)
[Public Washrooms Map](#)



[Notice of Loss/Injury Claim](#)

© 2022 The County of Bruce. All Rights Reserved.

Any documents found on this page are available in a variety of accessible formats or communication supports upon request. Due to conditions beyond our control, there are some instances where we are unable to provide information in an accessible format (for example, our mapping information). We will be monitoring these sections, and develop an accessible solution as technology improves. If you use assistive technology and the format of any content on this web site interferes with your ability to access the information, please contact the Clerk at 519-881-1291 or LWhite@brucecounty.on.ca