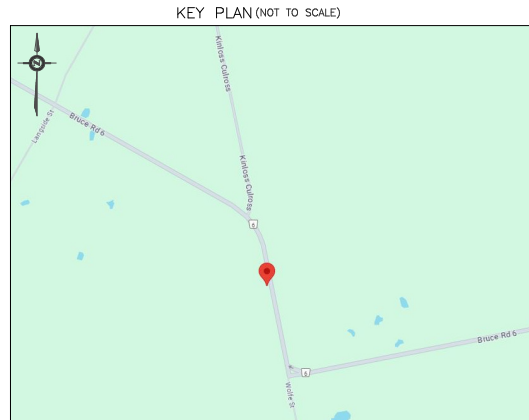
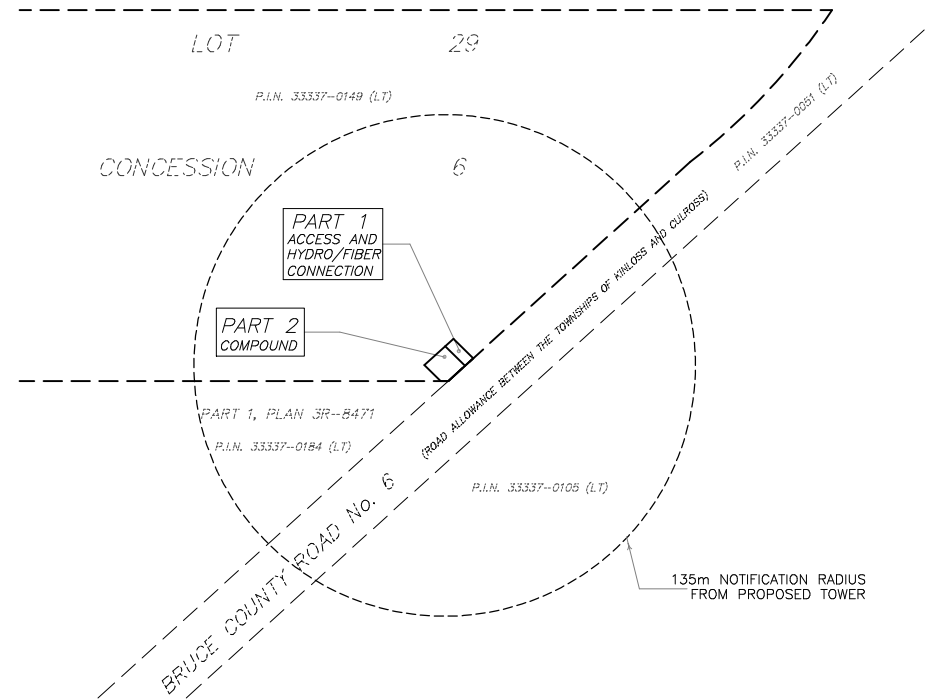


SITE DATA	EXISTING	PROPOSED
PROPERTY AREA	±14.5ha	
AREA LEASED		
ACCESS AND HYDRO/FIBER CONNECTION (PART 1) COMPOUND (PART 2)		90 sq.m. 221 sq.m. 311 sq.m.
UNITS		1 PROPOSED RADIO EQUIPMENT SHELTER 1 PROPOSED STEEL SELF-SUPPORT TOWER
HEIGHT OF TOWER		45m
SETBACKS		
PROPOSED STEEL SELF-SUPPORT TOWER		
FRONT (BRUCE COUNTY ROAD No. 6)		±8 m
SIDE (SOUTH)		±8 m
PROPOSED RADIO EQUIPMENT SHELTER		
FRONT (BRUCE COUNTY ROAD No. 6)		±11 m
SIDE (SOUTH)		±8 m



NOTIFICATION RADIUS PLAN
SCALE 1:2000



SITE PLAN
PROPOSED
TELECOMMUNICATION INSTALLATION
1575 BRUCE ROAD 6
PART OF LOT 29
CONCESSION 6
TOWNSHIP OF HURON-KINLOSS
COUNTY OF BRUCE

SCALE 1 : 400



ALEX MARTON LTD.
ONTARIO LAND SURVEYORS

METRIC
DISTANCES AND COORDINATES SHOWN ON THIS PLAN ARE IN METRES AND CAN BE CONVERTED TO FEET BY DIVIDING BY 0.3048.

SCHEDULE

PART	LOT	CONCESSION	P.I.N.	AREA sq.m
1				90
2	PART OF 29	6	33337-0149 (LT)	221

INTEGRATION NOTE

BEARINGS SHOWN ARE GRID BEARINGS AND ARE DERIVED FROM OBSERVED REFERENCE POINTS (ORP'S) 1 AND 2 BY REAL TIME NETWORK OBSERVATIONS, UTM ZONE 17, NAD 83 (CSRS) (2010.0 EPOCH).

DISTANCES SHOWN ON THIS PLAN ARE GROUND DISTANCES AND CAN BE CONVERTED TO GRID DISTANCES BY MULTIPLYING BY THE COMBINED SCALE FACTOR OF 0.999569.

INTEGRATION DATA

OBSERVED REFERENCE POINTS (ORP'S) DERIVED FROM GPS REAL TIME NETWORK OBSERVATIONS AND ARE REFERRED TO UTM ZONE 17, NAD 83 (CSRS) (2010.0). COORDINATE VALUES ARE TO URBAN ACCURACY PER SECTION 14 (2) OF O. REG 216/10		
POINT ID	NORTHING	EASTING
ORP 1	4870940.26	469037.41
ORP 2	4870948.47	469020.55

COORDINATES CANNOT, IN THEMSELVES, BE USED TO RE-ESTABLISH CORNERS OR BOUNDARIES SHOWN ON THIS PLAN.

ELEVATION NOTE

ELEVATIONS SHOWN HEREON ARE GEODETIC AND ARE DERIVED FROM GPS OBSERVATIONS USING REAL TIME NETWORK OBSERVATIONS.

SURVEYOR'S CERTIFICATE

I CERTIFY THAT:
1. THE SURVEY WAS COMPLETED ON THE 15TH DAY OF AUGUST, 2024.

SEPTEMBER 16, 2024
DATE

A. MARTON
ONTARIO LAND SURVEYOR

AMENDMENTS		
No.	DESCRIPTION	DATE
1.	COMPOUND AND ACCESS WAY REVISED.	30.09.2024

Xplore	LATITUDE	N43°59'27.5"
		43.990975
	LONGITUDE	W81°23'10.5"
		-81.386235
	ELEVATION	308.2

SITE NAME: LOWER LANGSIDE (ON8439)

ALEX MARTON LIMITED
ONTARIO LAND SURVEYORS
160 APPLEWOOD CRESCENT, UNIT 8,
CONCORD, ONTARIO, L4K 4H2
PHONE: 905-879-9889 FAX: 905-879-0770
E-MAIL: alex@amsurveying.ca
WEBSITE: www.amsurveying.ca

PARTY CHIEF : H.Z.	FILE NAME: 2024-143(ON8439).DWG
DRAWN : Z.Y.	PLOT SCALE: 1:400
CHECKED : A.M.	PROJECT No. 2024-143

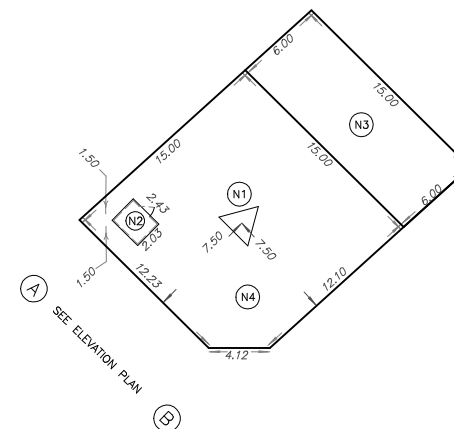
LOT

29

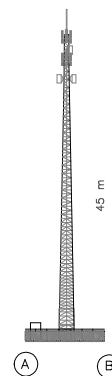
CONCESSION

6

PROPOSED COMPOUND LAYOUT PLAN
SCALE 1:250



ELEVATION PLAN
NOT TO SCALE



NOTES

- (N1) PROPOSED STEEL SELF-SUPPORT TOWER. PAINT COLOUR SUBJECT TO NAV CANADA REQUIREMENTS. ANTENNA NUMBER AND LOCATIONS TO BE DETERMINED. FOUNDATION DESIGN PENDING SOIL REPORT.
- (N2) PROPOSED WALK IN RADIO EQUIPMENT SHELTER ON REINFORCED CONCRETE SLAB.
- (N3) PROPOSED ACCESS WAY AND HYDRO/FIBER OPTIC CONNECTION.
- (N4) REMOVE EXISTING TOPSOIL, PROOF ROLL SUBGRADE AND PLACE 300 mm GRANULAR A ACROSS COMPOUND AREA. MATCH INTO EXISTING GRADES ADJACENT TO THE COMPOUND. PROVIDE POSITIVE DRAINAGE AWAY FROM THE TOWER, SHELTERS AND HYDRO PAD TOWARDS THE NATURAL SLOPE OF THE SITE. REINSTATE ALL DISTURBED AREAS.

LEGEND

SYMBOL	DENOTES
■	SURVEY MONUMENT FOUND
●	SHORT STANDARD IRON BAR
○	PROPERTY IDENTIFIER NUMBER
AN	HARRY R. WHALE, O.L.S.
▲	ANCHOR
TB	TOP OF BANK
UP	UTILITY POLE
CR	CENTERLINE
O/H	OVERHEAD
INV	INVERT
φ	DIAMETER