

THE FUTURE FOR KIN- BRUCE PARK



The Kin-Bruce Park was created with the Kin-Bruce subdivision in the early 1970's.

We have been unable to locate the agreement that created the Park.

Everyone seems to be in agreement that it is most likely that the land for the Park was given to the Township as a condition of approval of the subdivision.



KIN-BRUCE PARK

For the first few years there was nothing on the Kin-Bruce Park lands.

The residents of the subdivision then got together and used salvaged materials to construct the backstop and fencing for the Kin-Bruce ball diamond.

The Township provided some sand for the infield and some dirt for the outfield.

For many years there was a Kin-Bruce ball team composed of local residents.

Many years ago, a small children's playground was installed by the Township.



Other than these 2 changes Kin-Bruce park is essentially the same as it was 50 years ago.

The residents of the subdivision planted most of the trees in the park.

The trees have struggled constantly since they were planted because most of the topsoil was stripped off the land before it became a park.

Emerald ash borer finished off the ash trees planted along Lake Range Drive.



The township uses the north end of the park as a temporary dumping ground for snow, leaves and road sweepings.

This area is used to stage gravel, sand and topsoil for various projects in the area.

Construction equipment is often stored on the property.



Total capital expenditures on improvements to Kin-Bruce park over the past 20 years.

\$0

“Our pitiful playground used to have teeter-totters – they took them away. Our ball diamond used to have bleachers – they took them away. We used to have a picnic table – they took it away. How can a public park not even have a picnic table or a park bench?”



The new Township Of
Huron-Kinloss PARKS
AND TRAILS PLAN
STRATEGIC REPORT
developed by pl.ural
November 2024



The Township of Huron-Kinloss
PARKS AND TRAILS PLAN

Park Concepts | Final Presentation | September 21, 2024



pl.ural

SECTION 7: “PARKLAND & GREENSPACE RATIO ASSESSMENT



Section 7 | Parkland & Greenspace Ratio Assessment

This section outlines the assessment and comparison of the parkland-to-resident ratio with similar municipalities, which will help identify areas for improvement - if any.

“TOTAL COMPARATOR
AVERAGE PARKLAND RATIO
1 RESIDENT TO X HA OF
PARKLAND

Parkland Information		Comparator Municipality		Est. Population	Total Parkland (ha)	Parkland Ratio
(18 Park Sites in the Scope of Work)		Ashfield-Colborne-Wawanosh		6,000	240	1:0.04
		Brockton		9,800	48	1:0.005
		Kincardine		12,300	123	1:0.01
		**Total Comparator Average Parkland Ratio				1:0.02

ID No.	Park Name
HK1	Huronville Park
HK2	Kin Bruce Park
HK3	Heritage Park
HK4	Pearl Elizabeth Greenspace
HK5	Langdon Park
HK6	Lions Park
HK7	Point Clark Community Centre
HK8	Blue Park
HK9	Lighthouse Park
HK10	Attawandaron park
HK11	Reids Corner
HK12	Memorial Park
HK13	Lewis Park
HK14	Park Street Soccer Fields
HK15	Victoria Park
HK16	Waterworks Park
HK17	Kinsmen Park
HK18	Whitechurch Park

Lakeshore South	Point Clark	0.5	Tuscanora Nature Trail	1.2	
Lakeshore South	Point Clark	0.2			
Lakeshore South	Point Clark	0.6			
Huron-Kinloss	Reid's Corner	1.3			
Ripley	Town of Ripley	6.5			
Ripley	Town of Ripley	0.5			
Ripley	Town of Ripley	2.8			
Lucknow	Village of Lucknow	0.6			
Lucknow	Village of Lucknow	0.4			
Lucknow	Village of Lucknow	1.2			
Whitechurch	Village of Whitechurch	1.1			
*Total Parkland		28.8	*Total Trails & Greenspace		27.7

Huron-Kinloss Population (2024 estimate): 7,600 residents	
Huron-Kinloss Parkland/Greenspace Per Resident Ratio (ha) = 1:0.07	

Parkland (ha)	Parkland Ratio
40	1:0.04
8	1:0.005
23	1:0.01
Ratio	1:0.02

The Parkland and Greenspace Ratio Assessment indicates that the Township of Huron-Kinloss maintains a commendable ratio of parkland and greenspace per resident, currently at 1:0.07 ha. This is significantly higher than the average for comparator municipalities, with a ratio of 1:0.02 ha.

Additionally, if beachfront areas were included in the calculation, Huron-Kinloss would surpass its neighbouring municipalities by a wide margin. As a result, Huron-Kinloss provides its community with ample outdoor and recreational opportunities.

Notes:

* Total Parkland is calculated from the 18 park sites indicated in the scope of work, and includes additional Trails & Greenspace in Huron-Kinloss not included in the scope of work. The total ratio does not include areas of beach front.

** Total Comparator Municipalities Average Parkland Ratio is calculated by park and recreation asset data from comparator Municipalities; Kincardine, Ashfield-Colborne-Wawanosh, Brockton.

TOTAL COMPARATOR
AVERAGE VALUE OF
**0.02 HECTARES PARKLAND
PER RESIDENT**

Comparator Municipalities Parkland			
Comparator Municipality	Est. Population	Total Parkland (ha)	Parkland Ratio
Ashfield-Colborne-Wawanosh	6,000	240	1:0.04
Brockton	9,800	48	1:0.005
Kincardine	12,300	123	1:0.01
**Total Comparator Average Parkland Ratio			1:0.02

WE DO AGREE WITH plural
THAT IT IS VALID TO
COMPARE OURSELVES
WITH OUR NEIGHBOURS

Comparator Municipalities Parkland			
Comparator Municipality	Est. Population	Total Parkland (ha)	Parkland Ratio
Ashfield-Colborne-Wawanosh	6,000	240	1:0.04
Brockton	9,800	48	1:0.005
Kincardine	12,300	123	1:0.01
**Total Comparator Average Parkland Ratio			1:0.02

THE AUTHORS OF THIS REPORT
HAVE CALCULATED THE RATIO OF
PARKLAND/GREENSPACE PER
RESIDENT OF HURON-KINLOSS TO
BE 0.07.

Parkland & Greenspace Ratio Assessment										
Parkland Information (18 Park Sites in the Scope of Work)					Trails & Greenspace Information (Additional Land Excluded from Scope of Work)					
ID No.	Park Name	Community	Settlement Area	Size (approx. Hectares)	Trails & Greenspace Name	Size (approx. Hectares)	Comparator Municipalities Parkland			
							Comparator Municipality	Est. Population	Total Parkland (ha)	Parkland Ratio
HK1	Huronville Park	Lakeshore North	Huronville	1.5	Apple Rail Trail	7.9	Ashfield-Colborne-Wawanosh	6,000	240	1:0.04
HK2	Kin Bruce Park	Lakeshore North	Kin Bruce	2.2	Attawandaron Nature Trail	0.6	Brockton	9,800	48	1:0.005
HK3	Heritage Park	Lakeshore North	Heritage Heights	2.3	Blairs Grove Nature Trail	9.1	Kincardine	12,300	123	1:0.01
HK4	Pearl Elizabeth Greenspace	Lakeshore North	Bruce Beach	0.3	Deer Run Nature Trail	0.9	**Total Comparator Average Parkland Ratio		1:0.02	
HK5	Langdon Park	Lakeshore South	Blairs Grove	0.5	Green Acres Trail	4.3				
HK6	Lions Park	Lakeshore South	Lurgan Beach	0.8	Lewis Trail	3.0				
HK7	Point Clark Community Centre Park	Lakeshore South	Point Clark	5.5	Lighthouse Park	3.7				
HK8	Blue Park	Lakeshore South	Point Clark	0.5	Tuscanora Nature Trail	1.2				
HK9	Lighthouse Park	Lakeshore South	Point Clark	0.2						
HK10	Attawandaron park	Lakeshore South	Point Clark	0.6						
HK11	Reids Corner	Huron-Kinloss	Reid's Corner	1.3						
HK12	Memorial Park	Ripley	Town of Ripley	6.5						
HK13	Lewis Park	Ripley	Town of Ripley	0.5						
HK14	Park Street Soccer Fields	Ripley	Town of Ripley	2.8						
HK15	Victoria Park	Lucknow	Village of Lucknow	0.6						
HK16	Waterworks Park	Lucknow	Village of Lucknow	0.4						
HK17	Kinsmen Park	Lucknow	Village of Lucknow	1.2						
HK18	Whitechurch Park	Whitechurch	Village of Whitechurch	1.1						
HK17	Kinsmen Park	Lucknow	Village of Lucknow	1.2						
HK18	Whitechurch Park	Whitechurch	Village of Whitechurch	1.1						
*Total Parkland						28.8	*Total Trails & Greenspace 27.7			
Huron-Kinloss Population (2024 estimate): 7,600 residents										
Huron-Kinloss Parkland/Greenspace Per Resident Ratio (ha) = 1:0.07										

THE AUTHORS OF THIS REPORT
HAVE CALCULATED THE RATIO OF
PARKLAND/GREENSPACE PER
RESIDENT OF HURON-KINLOSS TO
BE 0.07.

Parkland & Greenspace Ratio Assessment										
Parkland Information (18 Park Sites in the Scope of Work)					Trails & Greenspace Information (Additional Land Excluded from Scope of Work)		Comparator Municipalities Parkland			
ID No.	Park Name	Community	Settlement Area	Size (approx. Hectares)	Trails & Greenspace Name	Size (approx. Hectares)	Comparator Municipality	Est. Population	Total Parkland (ha)	Parkland Ratio
HK1	Huronville Park	Lakeshore North	Huronville	1.5	Apple Rail Trail	7.9	Ashfield-Colborne-Wawanosh	6,000	240	1:0.04
HK2	Kin Bruce Park	Lakeshore North	Kin Bruce	2.2	Attawandaron Nature Trail	0.6	Brockton	9,800	48	1:0.005
HK3	Heritage Park	Lakeshore North	Heritage Heights	2.3	Blairs Grove Nature Trail	9.1	Kincardine	12,300	123	1:0.01
HK4	Pearl Elizabeth Greenspace	Lakeshore North	Bruce Beach	0.3	Deer Run Nature Trail	0.9	**Total Comparator Average Parkland Ratio			1:0.02
HK5	Langdon Park	Lakeshore South	Blairs Grove	0.5	Green Acres Trail	4.3				
HK6	Lions Park	Lakeshore South	Lurgan Beach	0.8	Lewis Trail	3.0				
HK7	Point Clark Community Centre Park	Lakeshore South	Point Clark	5.5	Lighthouse Park	3.7				
HK8	Blue Park	Lakeshore South	Point Clark	0.5	Tuscanora Nature Trail	1.2				
HK9	Lighthouse Park	Lakeshore South	Point Clark	0.2						
HK10	Attawandaron park	Lakeshore South	Point Clark	0.6						
HK11	Reids Corner	Huron-Kinloss	Reid's Corner	1.3						
HK12	Memorial Park				Brockton	9,800	48	1:0.005		
HK13	Lewis Park				Kincardine	12,300	123	1:0.01		
HK14	Park Street Soccer Fields				**Total Comparator Average Parkland Ratio					1:0.02
HK15	Victoria Park									
HK16	Waterworks Park									
HK17	Kinsmen Park									
HK18	Whitechurch Park									

Results:

The Parkland and Greenspace Ratio Assessment indicates that the Township of Huron-Kinloss maintains a commendable ratio of parkland and greenspace per resident, currently at 1:0.07 ha. This is significantly higher than the average for comparator municipalities, with a ratio of 1:0.02 ha.

Additionally, if beachfront areas were included in the calculation, Huron-Kinloss would surpass its neighbouring municipalities by a wide margin. As a result, Huron-Kinloss provides its community with ample outdoor and recreational opportunities.

THE AUTHORS OF THIS REPORT
HAVE CALCULATED THE RATIO OF
PARKLAND/GREENSPACE PER
RESIDENT OF HURON-KINLOSS TO
BE 0.07.

Brockton	9,800	48	1:0.005
Kincardine	12,300	123	1:0.01
**Total Comparator Average Parkland Ratio			1:0.02

Results:

The Parkland and Greenspace Ratio Assessment indicates that the Township of Huron-Kinloss maintains a commendable ratio of parkland and greenspace per resident, currently at 1:0.07 ha. This is significantly higher than the average for comparator municipalities, with a ratio of 1:0.02 ha.

Additionally, if beachfront areas were included in the calculation, Huron-Kinloss would surpass its neighbouring municipalities by a wide margin. As a result, Huron-Kinloss provides its community with ample outdoor and recreational opportunities.

LET'S CHECK THE NUMBERS

Whitechurch	Village of Whitechurch	1.1	
*Total Parkland		28.8	*Total Trails & Greenspace 27.7
Huron-Kinloss Population (2024 estimate): 7,600 residents			
Huron-Kinloss Parkland/Greenspace Per Resident Ratio (ha) = 1:0.07			

- 28.8 hectares of Parkland + 27.7 hectares of Trails Greenspace= 56.5 hectares.
- 56.5 hectares ÷ 7,600 residents =
- 0.0074 hectares per resident,
- **0.0074 hectares per resident not 0.07 hectares per resident**

Instead of Huron-Kinloss Having much more parkland per resident **we actually need 95 hectares of new parks to equal our neighbour's average.**

LET'S CHECK THE NUMBERS

- Even these are not the correct numbers.
- The area of Parks stated for our neighbour Municipalities **do not include their Trails.**
- **To get a fair comparison Huron-Kinloss should not include our Trails** in the total area of Parks and Greenspace.
- This changes the ratio of parkland to resident to **0.0038.** - only **19% of our neighbour's average.**

Huron-Kinloss Council and staff require accurate information to make important decisions on behalf of its citizens. In this case

THE INFORMATION IT WAS GIVEN WAS NOT ACCURATE.

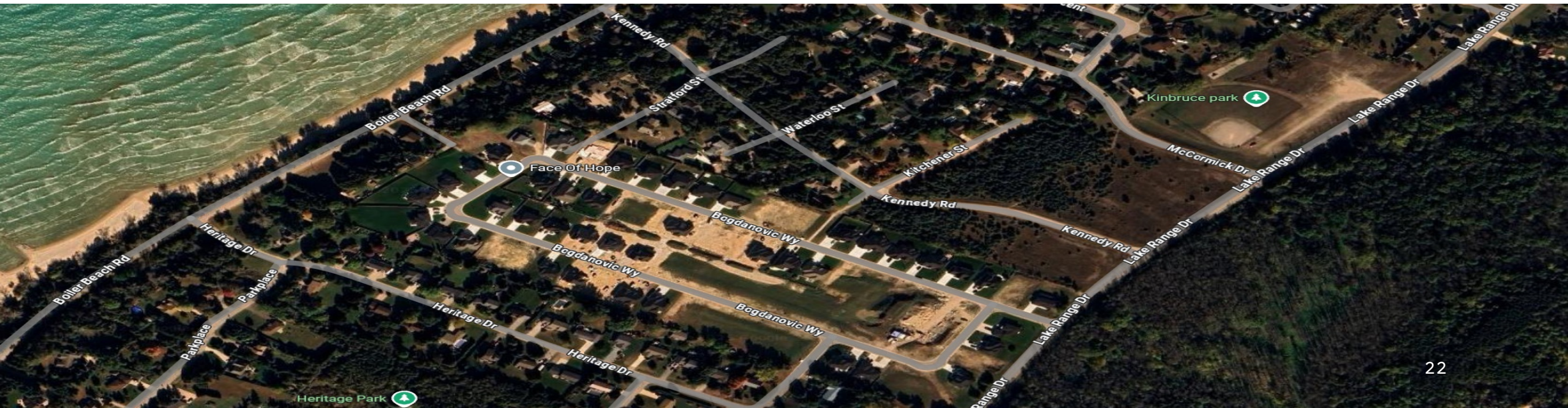


**HURON-
KINLOSS HAS
NOT CREATED
A NEW PARK
IN OVER 50
YEARS.**

**OVER THAT
SAME PERIOD
THE
POPULATION
OF HURON
KINLOSS HAS
INCREASED BY
2,060
RESIDENTS OR
36%.**

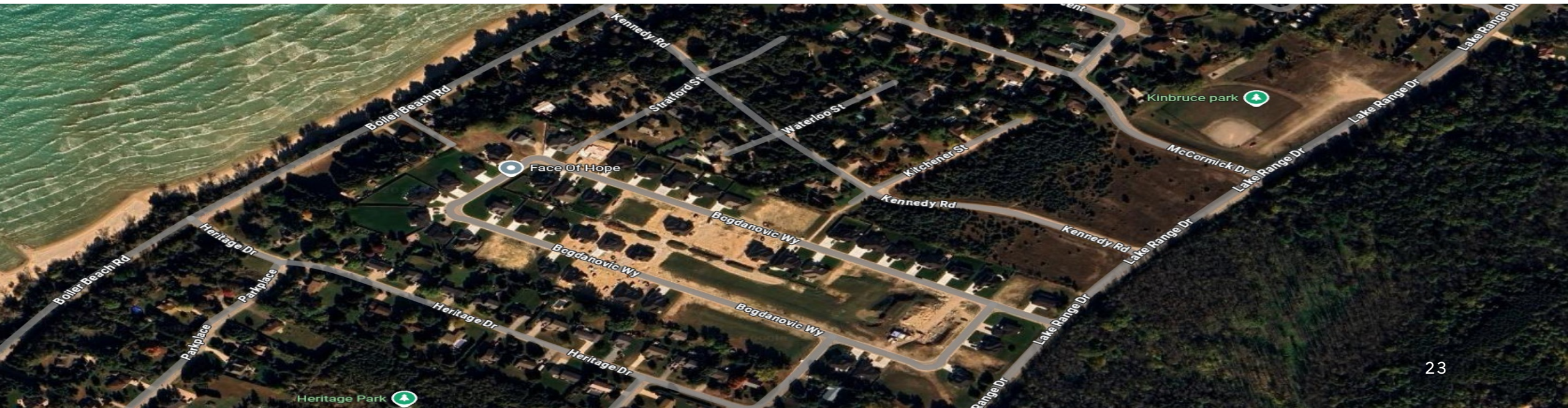
CRIMSON OAKS VALLEY

When the Crimson Oaks Valley subdivision was proposed in 2019 Huron Kinloss chose to accept a cash payment of \$57,750 in lieu of donated parkland. Council stated that there was adequate park facilities in the area ie Heritage Park and Kin Bruce Park.



CRIMSON OAKS VALLEY

If we multiply 77 lots times 2.55 residents per home times 0.02 hectares per resident a new 4 hectare park should have been created.



Money from
Crimson Oaks
Valley to Improve
Kin-Bruce Park

\$0



KIN-BRUCE PARK IS
TOO SMALL FOR
LOCAL NEEDS

- 72% of users access their chosen park by walking.
- KinbBruce Park and Greenspace is actually too small to satisfy the needs of the Kin-Bruce subdivision, Krystal Court and Kennedy Road.
- This is even before the added demands of Crimson Oaks Valley residents.





DESPITE NEGLECT KIN-BRUCE PARK IS STILL USED DAILY.

The playground gets used in spite of its poor condition.

Kids and parents throw balls and frisbees, fly kites and launch rockets ...

In winter, a dozen preschoolers at a time can be seen and heard sledding on the gentle hill.

2022 PARKS AND RECREATION MASTER PLAN

EXECUTIVE SUMMARY



BLUEPRINT FOR THE FUTURE

Parks & Recreation Master Plan

Executive Summary

INTRODUCTION

Parks, trails, open spaces, and recreation programs and amenities are critical to supporting the health and well-being of a community. The Township of Huron-Kinloss identified the development of a Parks and Recreation Master Plan as a key priority to support the provision of parks and recreation programs and facilities across the Township. The Master Plan provides a comprehensive framework to manage and sustain parks, recreation, and culture programs and facilities over the next 10 years.

Executive Summary

INTRODUCTION

Parks, trails, open spaces, and recreation programs and amenities are critical to supporting the health and well-being of a community. The Township of Huron-Kinloss identified the development of a Parks and Recreation Master Plan as a key priority to support the provision of parks and recreation programs and facilities across the Township. The Master Plan provides a comprehensive framework to manage and sustain parks, recreation, and culture programs and facilities over the next 10 years.

development of the core areas, pillars, and key initiatives to address community needs and support parks and recreation decision-making in the future.

Phase 1

Identification of Needs
(June to September)



Phase 2

Development of Parks and Recreation Master Plan
(September to December)





KIDS NEED A
SAFE PLACE TO
PLAY.
KIN-BRUCE
PARK IS SUCH
A PLACE

2022 PARKS AND RECREATION MASTER PLAN

PAGE 51



BLUEPRINT FOR THE FUTURE

Parks & Recreation Master Plan

OBJECTIVES

INITIATIVE	ACTION REQUIRED	PRIMARY TARGET	LEAD	CAPITAL COST REQUIRED
Outreach				
3. Increase community engagement and outreach in parks and recreation planning	Adopt semi-annual meeting schedule with local communities to share and gather feedback on programming opportunities, projects, and initiatives, in parks and recreation	Community Development	CS	
	Create and adopt community engagement strategy for (re)development of all facilities	Community Development	Communications	
4. Identify opportunities to increase awareness and promotion of Township programs and services, including programs and services provided by others for the benefit of Township residents	Create and adopt a communications strategy for parks and recreation	Community Development	Communications	
	Consider development of trail maps	Active Healthy Community	CS	
	Consider development of neighbourhood facilities / amenities mapping	Active Healthy Community	CS	

WE HAVE NOT BEEN
AWARE OF ANY ACTIONS
TO MEET THIS INITIATIVE.

INITIATIVE	ACTION REQUIRED	PRIMARY TARGET	
Outreach			
3. Increase community engagement and outreach in parks and recreation planning	Adopt semi-annual meeting schedule with local communities to share and gather feedback on programming opportunities, projects, and initiatives, in parks and recreation	Community Development	CAPITAL ST REQUIRED
	Create and adopt community engagement strategy for (re)development of all facilities	Community Development	
4. Identify opportunities to increase awareness and promotion of Township programs and services, including programs and services provided by others for the benefit of Township residents	Create and adopt a communications strategy for parks and recreation	Community Development	
	Consider development of trail maps	Active Healthy Community	
	Consider development of neighbourhood facilities / amenities mapping	Active Healthy Community	

THE NEIGHBOURS OF KIN-BRUCE PARK WOULD BE PLEASED TO WORK WITH HURON-KINLOSS TO DEVELOP A PLAN TO REVITALIZE KIN-BRUCE PARK.

THE NEIGHBOURS OF KIN-BRUCE PARK ASK COUNCIL MAKE THE COMMITMENT TO PRESERVE OUR PARK.



Park Redevelopment Intent

Revitalizing and underutilized location through improved programming and amenities, while also allowing the space for future development to accommodate the evolving needs of the community.

Key Improvements

- A** - **Walking Path:** Park look- wheelchair accessible, 1.5 m wide, limestone screening.
- B** - **Tree Planting:** Native deciduous species, and Memorial Trees- provide shade in warm months.
- C** - **Playground Upgrades:** New equipment, wood chip surface and boundary, seating
- D** - **Naturalized Meadow:** Native wildflowers and shrubs to attract pollinators and songbirds. Connections and shortcuts, 1m wide, woodchip surface
- E** - **Picnic Areas:** Benches and picnic tables for community interactions
- F** - **Open Space:** Free space for "ball games" - volleyball, basketball, soccer, disc golf
- G** - **Portable Toilets:** Seasonal, centrally located, accessible
- H** - **Staging Area:** Defined area separates vehicle and pedestrian space, aggregate.
- I** - **Signage:** Identification & regulatory information at access points

PRESERVE KIN-BRUCE PARK

ONCE THE PARK IS GONE
IT'S GONE FOREVER....

