



Media Release

January 27, 2021

Emergency Order - Continues

In response to many requests for clarification regarding the current [Ontario Emergency Order](#), residents are asked to visit the Grey Bruce Health Unit website [Ontario Declares Second Provincial Emergency to Address COVID-19](#) and the provincial website [Enhancing public health and workplace safety measures in the province wide shutdown](#) for details.

The Provincial regulations are summarized on their website including a dedicated section to explain, in detail, the rules of this lockdown. The summary includes the following:

"In response to the alarming rise of COVID-19 cases, a declaration of emergency was made on January 12, 2021 for all of Ontario.

This decision was made in consultation with the Chief Medical Officer of Health and other health experts.

The declaration of emergency allows the government to:

- *strengthen public health and workplace safety measures*
- *create and enforce emergency orders*

The purpose is to help:

- *keep people at home as much as possible and save lives*
- *stop the spread of COVID-19 in communities*
- *prevent the hospital system from becoming overwhelmed*
- *protect vulnerable populations and those who care for them*

The enhanced public health and workplace safety measures are anticipated to be in place until at least February 9, 2021.

The results of these measures will be evaluated throughout the provincial emergency to determine when it is safe to lift any restrictions, or if they need to be extended."

It should also be noted that business restrictions are contained in Reg 82/20 under the *Re-Opening Ontario Act* not the Emergency Order. The Act is renewed through Reg. 458/20 which currently states closure restrictions will remain in force until February 19.

A healthier future for all.

101 17th Street East, Owen Sound, Ontario N4K 0A5 www.publichealthgreybruce.on.ca

519-376-9420

1-800-263-3456

Fax 519-376-0605

“We are seeing the anticipated positive impacts of lockdown - the numbers of new cases reported daily, locally, and provincially are decreasing.” Says Grey Bruce’s Top Doctor, Dr. Ian Arra. “If this trend, and the tremendous efforts of our residents and stakeholders continues, I am confident that we will see a shift to a re-opening stage again in the near future.”

For More Information:

Dr. Ian Arra, MD MSc FRCPC ACPM ABPM

Medical Officer of Health and Chief Executive Officer

To arrange to speak with Dr. Arra, please contact Drew Ferguson at:

519-376-9420 or 1-800-263-3456 ext. 1269 or d.ferguson@publichealthgreybruce.on.ca



Media Release

January 29, 2021

Rapid COVID-19 Test Kits Deployed by Grey Bruce Health Unit

The Grey Bruce Health Unit has obtained a supply of 14,000 Panbio™ Point of Care COVID-19 tests. Manufactured by Abbott, this high performance rapid COVID-19 test provides results in 15 to 20 minutes. The test results inform early decision making in relation to case management, outbreak management, and other potential interventions.

The ability to make quick decisions in these areas is an extremely valuable tool to help minimize transmission of COVID-19 in the facilities where they will be shared including long-term care homes, retirement homes, congregate settings, schools, childcare centres, first responders' workplaces and other settings.

Panbio™ COVID-19 Ag Rapid Nasal/Nasopharyngeal Test Device provides:

- Rapid results: test results in 15 - 20 minutes
- Reliable, high performance: sensitivity 91.4%
- Portable: can be deployed at point of care in a variety of settings
- Accessible solution: enables large-scale testing

The tests will be distributed to community partners to aid in various COVID-19 testing needs requiring rapid results and will help alleviate the current testing wait times for case and contact management investigations.

The test kits come from Ministry of Health and originally earmarked for Bruce Power. As Bruce Power has their own testing program, these rapid tests were available to be deployed in the community.

"The Grey Bruce Health Unit is always looking to reduce barriers related to testing and to improve COVID-19 case and contact management." Says Grey Bruce's Medical Officer of Health, Dr. Ian Arra. "These rapid tests will help us to be even more nimble in managing cases and clusters of COVID-19, while providing enhanced accessible options for testing to the residents of Grey and Bruce Counties."

For More Information:

A healthier future for all.

101 17th Street East, Owen Sound, Ontario N4K 0A5 www.publichealthgreybruce.on.ca

519-376-9420

1-800-263-3456

Fax 519-376-0605

Dr. Ian Arra, MD MSc FRCPC ACPM ABPM

Medical Officer of Health and Chief Executive Officer

To arrange to speak with Dr. Arra, please contact Drew Ferguson at:

519-376-9420 or 1-800-263-3456 ext. 1269 or d.ferguson@publichealthgreybruce.on.ca



Media Release

January 30, 2021

Grey Bruce Health Unit confirms first death related to COVID-19

The Grey Bruce Health Unit has been notified of a death related to COVID-19. The individual, a male resident of Grey Bruce in his 60's, died this afternoon. He had been in isolation in hospital since early January.

As of today, there are 642 confirmed cases of COVID-19 in Grey Bruce.

"I offer my sincere condolences to the family and loved ones of the gentleman who passed away. Unfortunately, the news of this death only highlights the need for everyone to take this virus very seriously. It requires our collective actions to stem the spread of this virus. Please, stay at home and stay safe." Stated Dr. Ian Arra, Medical Officer of Health.

All close contacts with this case have been reviewed by public health.

Remember to take these precaution to help stop the spread of COVID-19:

- Wash hands frequently
- Watch distance (ideally 6ft)
- Wear face covering correctly
- Avoid Crowds, and
- Arrange for outdoor activities instead of indoors whenever possible

If you think you may have COVID-19 symptoms or have been in close contact with someone who has it, first self-isolate and then use [Ontario's Self-Assessment Tool](#) to see if you need to seek further care. If you need further assistance, call TeleHealth Ontario at 1-866-797-0000 or your health care provider. If you or someone you know is experiencing severe symptoms, call 911 immediately.

We continue to encourage you to connect with trusted sources for information on COVID-19, including canada.ca/coronavirus, [publichealthgreybruce](https://publichealthgreybruce.on.ca) and covid-19.ontario.ca

For More Information:

Dr. Ian Arra, MD MSc FRCPC ACPM ABPM

Medical Officer of Health and Chief Executive Officer

To arrange to speak with Dr. Arra, please contact Drew Ferguson at:

519-376-9420 or 1-800-263-3456 ext. 1269 or d.ferguson@publichealthgreybruce.on.ca

A healthier future for all.

101 17th Street East, Owen Sound, Ontario N4K 0A5 www.publichealthgreybruce.on.ca

519-376-9420

1-800-263-3456

Fax 519-376-0605



Media Release

January 11, 2021

Outbreak at Sepoy Manor Retirement Home Declared Over

The COVID-19 Outbreak at Sepoy Manor Retirement Home in Lucknow has been declared over.

An outbreak of COVID-19 in a retirement home is declared when one or more confirmed cases of COVID-19 are identified in the home. **The legal declaration of an outbreak, its termination, and any information with regard to the status of the outbreak can only be made by Public Health and posted on our [website](#).**

Sepoy Manor was quick to identify the outbreak, promptly notified Public Health, and worked closely with Grey Bruce Health Unit staff throughout the outbreak response.

Working together, Sepoy Manor and Health Unit staff carefully evaluated the situation and worked to immediately implement outbreak measures appropriate for the level of risk. An on-site visit by Public Health included a comprehensive Infection and Prevention Control (IPAC) audit that indicated full compliance by the home.

Thanks to the dedication, co-operation, and perseverance of staff at Sepoy Manor, the outbreak was resolved quickly with minimal impact to the home's staff and residents.

Thanks to everyone for a job well done.

For More Information:

Dr. Ian Arra, MD MSc FRCPC ACPM ABPM

Medical Officer of Health and Chief Executive Officer

To arrange to speak with Dr. Arra, please contact Drew Ferguson at:

519-376-9420 or 1-800-263-3456 ext. 1269 or d.ferguson@publichealthgreybruce.on.ca

A healthier future for all.

101 17th Street East, Owen Sound, Ontario N4K 0A5 www.publichealthgreybruce.on.ca

519-376-9420

1-800-263-3456

Fax 519-376-0605



Media Release

January 31, 2021

COVID-19 Associated with School

The Grey Bruce Health Unit is working with Bluewater District School Board to address a confirmed and a probable case of COVID-19 associated with Walkerton District Community School, in Brockton, Ontario.

While there are two individuals with COVID-19 associated with this school, our assessment, to date, indicates there is no evidence that transmission took place within the school environment. Currently there are no outbreaks (i.e. evidence of transmission from person to person) in any schools or childcare centres in Grey Bruce. No bus routes of any schools are involved with this case.

Public Health is the lead in all outbreaks and case management. Public Health will contact you if you have had close contact with someone who has COVID-19, based on a thorough risk assessment completed only by Public Health.

Determining who has had close contact is a decision that can only be made by Public Health. Anyone at heightened risk of COVID-19 transmission due to close contact to a person with COVID-19 will be contacted by Public Health within 24 hours of the investigation.

Those NOT contacted by Public Health need not take any additional steps including asymptomatic testing.

The Grey Bruce Health Unit will direct those considered at risk regarding testing requirements and recommendations (e.g., timing). There is no value in anyone being tested before they are notified and instructed to do so by Public Health. Results of early testing are unreliable and place individuals at risk of more testing than is required.

In this situation, the individuals with COVID-19 have been contacted directly by our COVID-19 Case and Contact Management Team. We are working with the clients and Bluewater District School Board to identify others, both in and out of the school environment, who may have been exposed and to determine their risk level.

All contact tracing and determination of individual and community risk is made by Public Health. This is true of all cases, whether in schools, workplaces or the community. A health care provider or school official cannot make this decision.

A healthier future for all.

101 17th Street East, Owen Sound, Ontario N4K 0A5 www.publichealthgreybruce.on.ca

519-376-9420

1-800-263-3456

Fax 519-376-0605

For More Information:

Dr. Ian Arra, MD MSc FRCPC ACPM ABPM

Medical Officer of Health and Chief Executive Officer

To arrange to speak with Dr. Arra, please contact Drew Ferguson at:

519-376-9420 or 1-800-263-3456 ext. 1269 or d.ferguson@publichealthgreybruce.on.ca



Media Release

February 4, 2021

Grey Bruce COVID-19 Vaccine Delivery

The Grey Bruce Health Unit has been advised by the Ministry of Health of a number of shipments of COVID-19 vaccines in the coming weeks.

The vaccines will be administered according to [The Grey Bruce Health Unit COVID-19 Vaccination Program Plan](#) and in line with provincial direction on vaccine distribution, as identified in the [Ontario Ministry of Health COVID-19 vaccine program](#).

The expected COVID-19 vaccine shipments to Grey Bruce are:

Week of Feb 1 - 700 doses MODERNA

Week of Feb 15 - approximately 3000 doses PFIZER

Week of Feb 22 - approximately 4000 doses PFIZER

These vaccine shipments will be used to:

- complete the initial doses to all residents of long-term care homes
- vaccinate long-term care staff and essential caregivers as well as 2nd dose for some long-term care residents.
- hospital staff
- as supply permits, first doses will also be administered to retirement home residents and staff
- Vaccinate Saugeen First Nation and Chippewa of Nawash residents

Vaccination prioritization and allocation to different sectors is based on provincial framework and risk assessment. The public can stay informed by reviewing the daily situation report on the Grey Bruce Health Unit's [website](#).

For More Information:

Dr. Ian Arra, MD MSc FRCPC ACPM ABPM

Medical Officer of Health and Chief Executive Officer

To arrange to speak with Dr. Arra, please contact Drew Ferguson at:

519-376-9420 or 1-800-263-3456 ext. 1269 or d.ferguson@publichealthgreybruce.on.ca

A healthier future for all.

101 17th Street East, Owen Sound, Ontario N4K 0A5 www.publichealthgreybruce.on.ca

519-376-9420

1-800-263-3456

Fax 519-376-0605





Media Release

February 1, 2021

Hockey Hub - COVID-19 Mass Immunization Hub in Grey Bruce

Clarification: There is not the quantities of vaccine in Grey Bruce to implement the Hockey Hub model, described below, at this time. The model will only be implemented when large quantities of vaccine become available.

The Grey Bruce Health Unit has developed the Hockey Hub, a made in Canada solution for mass COVID-19 immunization clinics.

The Hockey Hub uses local hockey arenas to deliver thousands of COVID-19 vaccines per day in local communities, based on a standard size hockey rink – ubiquitous throughout Ontario and Canada. The plan is scalable in that it can be expanded or contracted depending on the amount of vaccine available and the number of clients to be vaccinated.

The Hockey Hub (presentation attached) was presented on Saturday to General (retired) Rick Hillier, former Chief of Defence Staff for the Canadian Forces, chair of the province's [Ministers' COVID-19 Vaccine Distribution Task Force](#). "A professional and well designed plan. Caring and considerate for all Ontarians." stated General Hillier. "Great example for rural and small urban areas across Ontario to consider - very much Hockeyville Canada!"

The Hockey Hub, set up in a standard hockey arena, can administer 4500 vaccines in a 10-hour shift of 5 nurses (or whoever is administering the vaccine). Traditional large volume clinics administer about 1000 vaccines a day, employing 20 nurses. Conventional smaller vaccine clinics administer 400 vaccines a day, in a shift of 8 nurses. The efficiency of the Hockey Hub model is based on utilizing a non-clinical staff for any task that is non-clinical, preserving the clinical capacity to support the healthcare system.

Process flow times have been calculated to the half minute. In the Hockey Hub, a vaccinator can administer 90 vaccines per hour. In a typical vaccine clinic, a vaccinator can administer 14 vaccines per hour.

The difference in the Hockey Hub model is the streamlined flow-through process. Once registered, the client remains in an individual pod for documentation, administering vaccine and recovery. The person administering the vaccine moves from pod to pod.

A healthier future for all.

101 17th Street East, Owen Sound, Ontario N4K 0A5 www.publichealthgreybruce.on.ca

519-376-9420

1-800-263-3456

Fax 519-376-0605

The typical set-up in a standard rink would have 150 pods with one nurse assigned 30 pods each.

Activating all 3 Hockey Hubs in Grey and Bruce, given sufficient supply of vaccine, it would take about 21 days to vaccinate 140,000 people or 75 percent of Grey Bruce's population. Conventional vaccine clinics would take considerably longer, months rather than days.

The Hockey Hub provides several efficiencies. Clinically trained personnel are focused on administering the vaccine requiring only 5 clinically trained personnel to administer 450 vaccines per hour. Other non-clinical staff take on the clerical and support roles. There is a reduced risk of injury/fainting as clients are immunized and recover in the same location instead of risking fainting while walking to a recovery area (fainting is a well-known risk in immunization clinics). The one-touch surface means decreased surface cleaning to minimize the risk of transmission.

The model is cost-effective. The Hockey Hub costs about \$6000 per thousand vaccines; about \$1.7 million total for 140,000 population. Large volume clinics cost \$26,000 per thousand or \$7.2 million for 140,000 population.

The Hub model capitalizes on the optimal readiness and collaboration among the Grey Bruce Health Unit, Grey and Bruce municipalities, police services in Grey Bruce, and community partners. For example, Bruce Power (the largest nuclear generation facility in Canada) has provided resources and logistics for three recovery centres (field hospitals) in three locations. These sites are currently being converted to mass immunization hubs including adding an ultra-low temperature vaccine freezer and accessories. Lower-tier municipalities have provided the arenas, and Grey and Bruce Counties have funded and supported part of the project. Chapman's has donated two ultra-low temperature vaccine freezers.

"Almost everyone in Canada is near a hockey arena. That makes the Hockey Hub an ideal solution for large scale immunization, not just locally but across Canada." Says Grey Bruce Medical Officer of Health Dr. Ian Arra. "Through mobilizing community partners, I have the utmost confidence the Hubs will be activated to utilize vaccines promptly no matter how large the shipments we receive. I trust the plan and the action will impress."

Attachment: Mass Immunization Hockey Hub Presentation


For More Information:

Dr. Ian Arra, MD MSc FRCPC ACPM ABPM

Medical Officer of Health and Chief Executive Officer

To arrange to speak with Dr. Arra, please contact Drew Ferguson at:

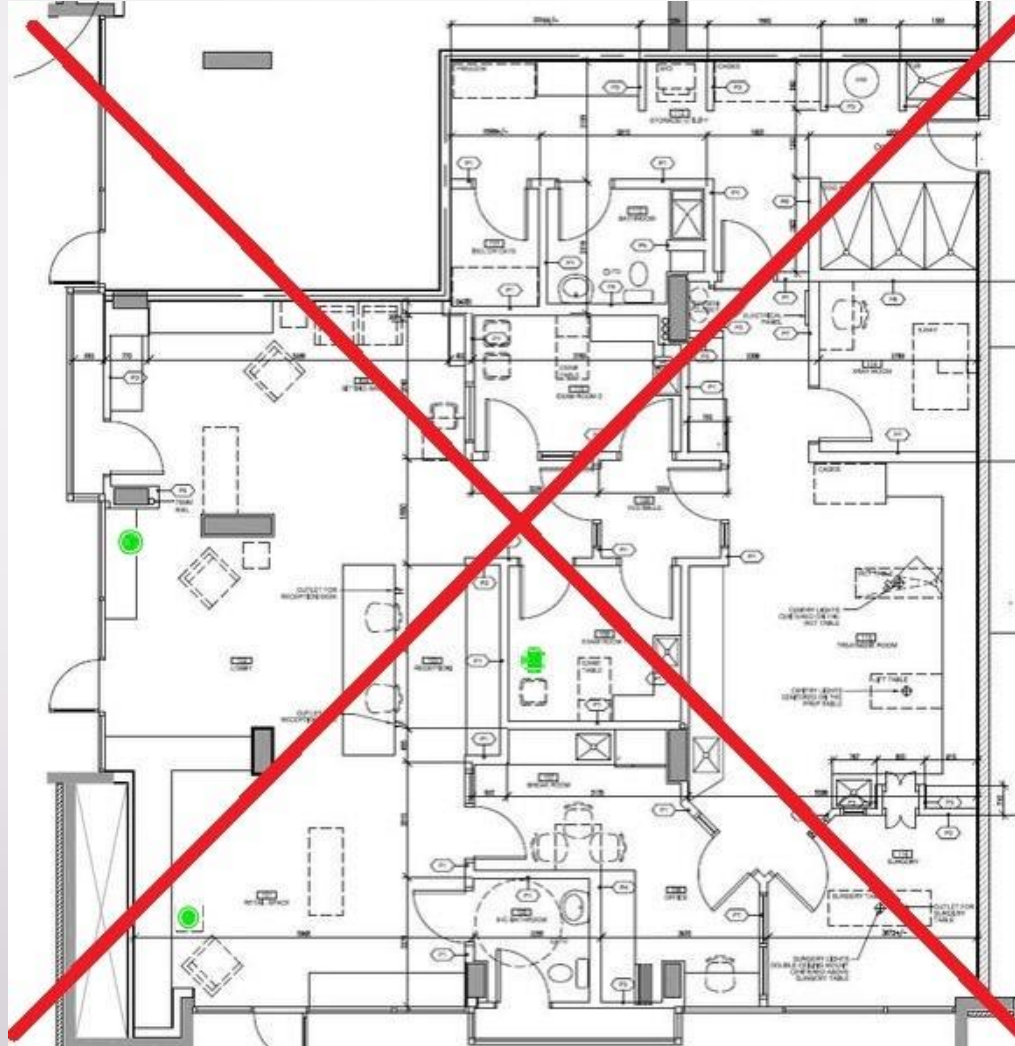
519-376-9420 or 1-800-263-3456 ext. 1269 or d.ferguson@publichealthgreybruce.on.ca



Grey Bruce Mass Immunization Hub (Hockey Hub)

Standard Clinic Model

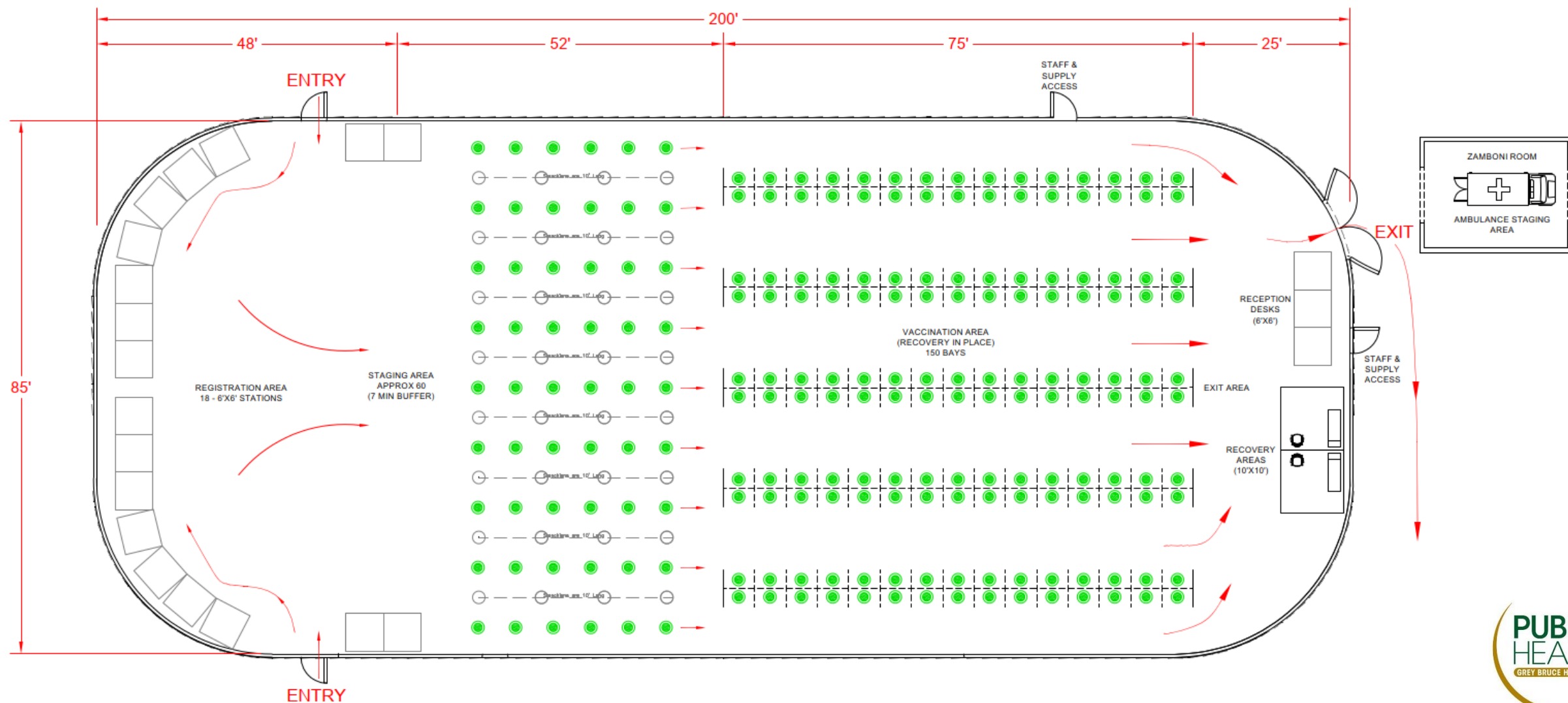
Vaccinates 400 people/day



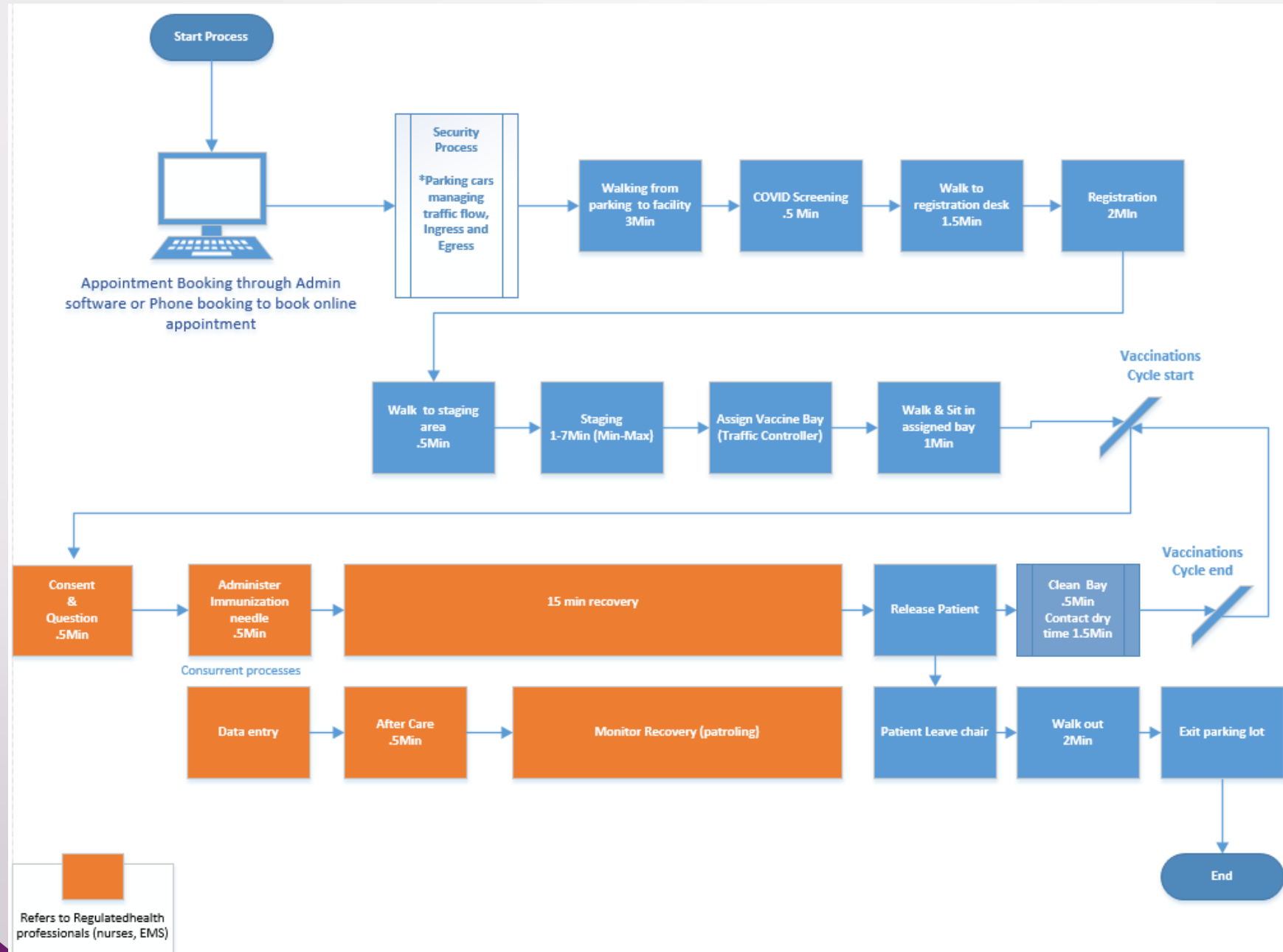
Traditional clinics are not designed for mass immunization

Mass Immunization Hub Model

Standard Rink vaccinates 4,500 people/day



Mass Immunization Hub Process Flow



Scalable:

- Base is the standard arena. Scale can be derived from:
- larger arenas
- multiple arenas on one site
- multiple sites

No need for prioritization, provide to all in a matter of days (Assuming sufficient supply of vaccine), saves unnecessary resources required for prioritization.

Relatively low Reaction Time (4 days)

Ubiquitous throughout Ontario and Canada, Plan is based on standard size hockey rink

Hockey Hub, Canadian Innovation

Limitation

- Parking and road access
- Supply of vaccine

Health Effects Comparison

Traditional Clinic Models	Hockey Hub Model
inefficiency in use of clinical staff	Minimal need of clinical staff Most tasks completed by non-clinical staff
Increase risk of injury/faint after vaccination related to client transition from immunization space to recovery area	Vaccination, and recovery in the same spot Reduce risk of injury/faint after vaccine
Risk of transmission related to touch surfaces. cleaning for “touch surfaces” as each client has 2-3 touch surfaces (waiting area, immunizing station and recovery station) Need to clean door-handles, elevators ...	Decreased risk, decreased cleaning requirements for “touch surfaces” as each client has one touch surface (immunize and recovery in one spot) None

Human Resource Comparison of Models

	Standard Clinic Model	Large Venue Clinic Model	Grey Bruce Mass Immunization Hub Model
Vaccinations per vaccinator/per hour	6	14	90
Clinic Volume/day	400	1,000	4,500
Resource	#'s	#'s	#'s
Supervisors	1	2	2
Immunizers (nurses)	8	20	5
response assistants	6	15	-
Checkout support	3	8	-
Door Screener	-	-	4
Clinical navigators	-	-	10
Traffic flow/monitoring	1	4	10
Registration attendants	-	-	16
Data entry - floor	-	-	5
After care - clinical	-	-	5
Security	1	1	3
Cleaners	1	1	5
# of immunizers for 3 concurrent clinics/hubs	24	60	15

Cost Comparison of Models in Grey Bruce

	Standard Clinic Model	Large Venue Clinic Model	Grey Bruce Mass Immunization Hub Model
Vaccinations per vaccinator/per hour	6	14	90
Clinic Volume/day	1200	3,000	13,500
Number of clinics per day	3	3	3
Population to be vaccinated	140,000	140,000	140,000
Comparison	\$'s	\$'s	\$'s
Cost per model per day in thousands	11	25	27
Cost per 1,000 vaccines in thousands	26	26	6
Cost to vaccinate population (including x2) in millions	7.4	7.2	1.7
Comparison	Days	Days	Days
Raw days to vaccinate all of Grey and Bruce	234	94	21

Mission and Strategic Use of Hub

To provide the Provincial Government with a successful pilot of a logistic hub for vaccine delivery all communities in Ontario and Canada whether be it urban, small-urban, or rural communities

Mission/Strategic Objective

The objective of the pilot is to prevent the danger of the pandemic (the hospital system's ability to care for COVID and non-COVID patients being challenged leading to death and suffering) by eliminating the following two scenarios in 4 weeks (assumption optimal vaccine supply):

- Increased demand: Hospital system overwhelmed by increased number of hospital admission of infected high-risk individuals (>65 year old, heart and lung disease)
- Decreased supply: Reduced hospital human resources by being in isolation (infected) or quarantined (exposed)

Mission/Strategic Objective

Resources in Grey and Bruce will be available to support Ontario hot spots:

- 3 hospital systems full capacity (no risk of capacity threat due to COVID-19 outbreaks)
- Public Health capabilities; and
- other available resources 3 COVID-19 filed hospitals

The prompt execution of the comprehensive pilot will be crucial in maintaining and maximizing public confidence that our Government is protecting the health and safety of Ontarians. Such confidence is instrumental in the success of the remainder of the emergency response.

Questions?

i.arra@publichealthgreybruce.on.ca





Media Release

February 6, 2021

COVID-19 Associated with School

The Grey Bruce Health Unit is working with Bluewater District School Board to address a probable case of COVID-19 associated with Highpoint Community School, in Dundalk, Ontario.

A probable case is defined as direct link with a positive case, symptomatic and has not yet been tested.

While there is an individual with probable COVID-19 associated with this school, our assessment, to date, indicates that transmission did not take place within the school environment. Currently there are no outbreaks (i.e. evidence of transmission from person to person) in any schools or childcare centres in Grey Bruce. No bus routes of any schools are involved with this case.

In this situation, the person with COVID-19 has been contacted directly by our COVID-19 Case and Contact Management Team. We have worked with the individuals and the school, along with the relevant school boards and have identified all others, both in and out of the school environment, who may have been exposed and have determined their risk level. **All individuals that need to be notified have already been contacted.**

Those NOT contacted by Public Health need not take any additional steps including asymptomatic testing.

Public Health is the lead in all outbreaks and case management. Public Health will contact you if you have had close contact with someone who has COVID-19, based on a thorough risk assessment completed only by Public Health.

Determining who has had close contact is a decision that can only be made by Public Health. Anyone at heightened risk of COVID-19 transmission due to close contact to a person with COVID-19 will be contacted by Public Health within 24 hours of the investigation.

The Grey Bruce Health Unit will direct those considered at risk regarding testing requirements and recommendations (e.g., timing). There is no value in anyone being tested before they are notified and instructed to do so by Public Health. Results of early testing are unreliable and place individuals at risk of more testing than is required.

As a reminder to the general public, if you develop symptoms consistent with COVID-19, please proceed to your nearest assessment centre for testing.

A healthier future for all.

101 17th Street East, Owen Sound, Ontario N4K 0A5 www.publichealthgreybruce.on.ca

All contact tracing and determination of individual and community risk is made by Public Health. This is true of all cases, whether in schools, workplaces or the community. A health care provider or school official cannot make this decision.

For More Information:

Dr. Ian Arra, MD MSc FRCPC ACPM ABPM

Medical Officer of Health and Chief Executive Officer

To arrange to speak with Dr. Arra, please contact Drew Ferguson at:

519-376-9420 or 1-800-263-3456 ext. 1269 or d.ferguson@publichealthgreybruce.on.ca



Media Release

February 6, 2021

COVID-19 Associated with School Bus Route

The Grey Bruce Health Unit is working with the relevant School Bus Company to address an individual with COVID-19 associated with a single bus route.

While there is an individual with COVID-19 associated with a school bus route, our assessment, to date, indicates that transmission did not take place within the bus or school environment. Currently there are no outbreaks (i.e. evidence of transmission from person to person) in any bus routes, schools or childcare centres in Grey Bruce.

In this situation, the person with COVID-19 has been contacted directly by our COVID-19 Case and Contact Management Team. We have worked with the individuals and the bus company, along with the relevant school boards and have identified all others, both in and out of the bus environment, who may have been exposed and have determined their risk level. **All individuals that need to be notified have already been contacted.**

Those NOT contacted by Public Health need not take any additional steps including asymptomatic testing.

Public Health is the lead in all outbreaks and case management. Public Health will contact you if you have had close contact with someone who has COVID-19, based on a thorough risk assessment completed only by Public Health.

Determining who has had close contact is a decision that can only be made by Public Health. Anyone at heightened risk of COVID-19 transmission due to close contact to a person with COVID-19 will be contacted by Public Health within 24 hours of the investigation.

The Grey Bruce Health Unit will direct those considered at risk regarding testing requirements and recommendations (e.g., timing). There is no value in anyone being tested before they are notified and instructed to do so by Public Health. Results of early testing are unreliable and place individuals at risk of more testing than is required. We remind everyone, if you develop symptoms consistent with COVID-19 to please get tested.

All contact tracing and determination of individual and community risk is made by Public Health. This is true of all cases, whether in schools, workplaces or the community. A health care provider or school official cannot make this decision.

A healthier future for all.

101 17th Street East, Owen Sound, Ontario N4K 0A5 www.publichealthgreybruce.on.ca

519-376-9420

1-800-263-3456

Fax 519-376-0605

For More Information:

Dr. Ian Arra, MD MSc FRCPC ACPM ABPM

Medical Officer of Health and Chief Executive Officer

To arrange to speak with Dr. Arra, please contact Drew Ferguson at:

519-376-9420 or 1-800-263-3456 ext. 1269 or d.ferguson@publichealthgreybruce.on.ca



Media Release

February 6, 2021

COVID-19 Associated with Childcare Centre

The Grey Bruce Health Unit is working with Kids Club Before and After school childcare program in Highpoint School in Dundalk to address a probable case of COVID-19 associated with a cohort at the centre.

A probable case is defined as a person with a direct link with a positive case, is symptomatic, and has not yet been tested.

While there is a person with probable COVID-19 associated with a cohort at this childcare centre, in our assessment, to date, there is no evidence of transmission within the childcare centre environment. Currently there are no outbreaks (i.e. evidence of transmission from person to person) in any schools or childcare centres in Grey Bruce.

In this situation, the person with COVID-19 has been contacted directly by our COVID-19 Case and Contact Management Team. We have worked with the individuals and the childcare centre, along with the relevant school boards and have identified all others, both in and out of the childcare environment, who may have been exposed and have determined their risk level. **All individuals that need to be notified have already been contacted.**

Those NOT contacted by Public Health need not take any additional steps including asymptomatic testing.

Public Health is the lead in all outbreaks and case management. Public Health will contact you if you have had close contact with someone who has COVID-19, based on a thorough risk assessment completed only by Public Health.

Determining who has had close contact is a decision that can only be made by Public Health. Anyone at heightened risk of COVID-19 transmission due to close contact to a person with COVID-19 will be contacted by Public Health within 24 hours of the investigation.

The Grey Bruce Health Unit will direct those considered at risk regarding testing requirements and recommendations (e.g., timing). There is no value in anyone being tested before they are notified and instructed to do so by Public Health. Results of early testing are unreliable and place individuals at risk of more testing than is required.

A healthier future for all.

101 17th Street East, Owen Sound, Ontario N4K 0A5 www.publichealthgreybruce.on.ca

519-376-9420

1-800-263-3456

Fax 519-376-0605

Public Health reminds everyone, if you develop symptoms consistent with COVID-19 to seek testing at your nearest assessment centre.

All contact tracing and determination of individual and community risk is made by Public Health. This is true of all cases, whether in childcare centres, schools, workplaces or the community. A health care provider or childcare official cannot make this decision.

For More Information:

Dr. Ian Arra, MD MSc FRCPC ACPM ABPM

Medical Officer of Health and Chief Executive Officer

To arrange to speak with Dr. Arra, please contact Drew Ferguson at:

519-376-9420 or 1-800-263-3456 ext. 1269 or d.ferguson@publichealthgreybruce.on.ca



Media Release

February 8, 2021

COVID-19 Associated with School

The Grey Bruce Health Unit is working with Bluewater District School Board to address a probable case of COVID-19 associated with Grey Highlands Secondary School in municipality of Grey Highlands, Ontario.

While there is an individual considered a probable case of COVID-19 associated with this school, our assessment, to date, indicates there is no evidence that transmission took place within the school environment. Currently there are no outbreaks (i.e. evidence of transmission from person to person) in any schools or childcare centres in Grey Bruce. No bus routes of any schools are involved with this case.

Public Health is the lead in all outbreaks and case management. Public Health will contact you if you have had close contact with someone who has COVID-19, based on a thorough risk assessment completed only by Public Health.

Determining who has had close contact is a decision that can only be made by Public Health. Anyone at heightened risk of COVID-19 transmission due to close contact to a person with COVID-19 will be contacted by Public Health within 24 hours of the investigation.

Those NOT contacted by Public Health need not take any additional steps including asymptomatic testing.

The Grey Bruce Health Unit will direct those considered at risk regarding testing requirements and recommendations (e.g., timing). There is no value in anyone being tested before they are notified and instructed to do so by Public Health. Results of early testing are unreliable and place individuals at risk of more testing than is required.

In this situation, the individual with COVID-19 has been contacted directly by our COVID-19 Case and Contact Management Team. Working with the client and Bluewater District School Board, we have identified any others, both in and out of the school environment, who may have been exposed to determine their level of risk.

All contact tracing and determination of individual and community risk is made by Public Health. This is true of all cases, whether in schools, workplaces or the community. A health care provider or school official cannot make this decision.

A healthier future for all.

101 17th Street East, Owen Sound, Ontario N4K 0A5 www.publichealthgreybruce.on.ca

519-376-9420

1-800-263-3456

Fax 519-376-0605

For More Information:

Dr. Ian Arra, MD MSc FRCPC ACPM ABPM

Medical Officer of Health and Chief Executive Officer

To arrange to speak with Dr. Arra, please contact Drew Ferguson at:

519-376-9420 or 1-800-263-3456 ext. 1269 or d.ferguson@publichealthgreybruce.on.ca



Media Release

February 8, 2021

COVID-19 Associated with Childcare Centre

The Grey Bruce Health Unit is working with Queen of Hearts Nursery School to address a probable case of COVID-19 associated with a cohort at the centre in Owen Sound.

A probable case is defined as direct link with a positive case, symptomatic and has not been tested.

While there is a person with probable COVID-19 associated with a cohort at this childcare centre, our assessment, to date, indicates that transmission did not take place within the childcare centre environment. Currently there are no outbreaks (i.e. evidence of transmission from person to person) in any schools or childcare centres in Grey Bruce.

Public Health is the lead in all outbreaks and case management. Public Health will contact you if you have had close contact with someone who has COVID-19, based on a thorough risk assessment completed only by Public Health.

Determining who has had close contact is a decision that can only be made by Public Health. Anyone at heightened risk of COVID-19 transmission due to close contact to a person with COVID-19 will be contacted by Public Health within 24 hours of the investigation.

Those NOT contacted by Public Health need not take any additional steps including asymptomatic testing.

The Grey Bruce Health Unit will direct those considered at risk regarding testing requirements and recommendations (e.g., timing). There is no value in anyone being tested before they are notified and instructed to do so by Public Health. Results of early testing are unreliable and place individuals at risk of more testing than is required.

In this situation, the person with COVID-19 has been contacted directly by our COVID-19 Case and Contact Management Team. We are working with the individual and the childcare centre to identify others, both in and out of the childcare centre environment, who may have been exposed and to determine their risk level.

All contact tracing and determination of individual and community risk is made by Public Health. This is true of all cases, whether in childcare centres, schools, workplaces or the community. A health care provider or childcare official cannot make this decision.

A healthier future for all.

101 17th Street East, Owen Sound, Ontario N4K 0A5 www.publichealthgreybruce.on.ca

519-376-9420

1-800-263-3456

Fax 519-376-0605

For More Information:

Dr. Ian Arra, MD MSc FRCPC ACPM ABPM

Medical Officer of Health and Chief Executive Officer

To arrange to speak with Dr. Arra, please contact Drew Ferguson at:

519-376-9420 or 1-800-263-3456 ext. 1269 or d.ferguson@publichealthgreybruce.on.ca