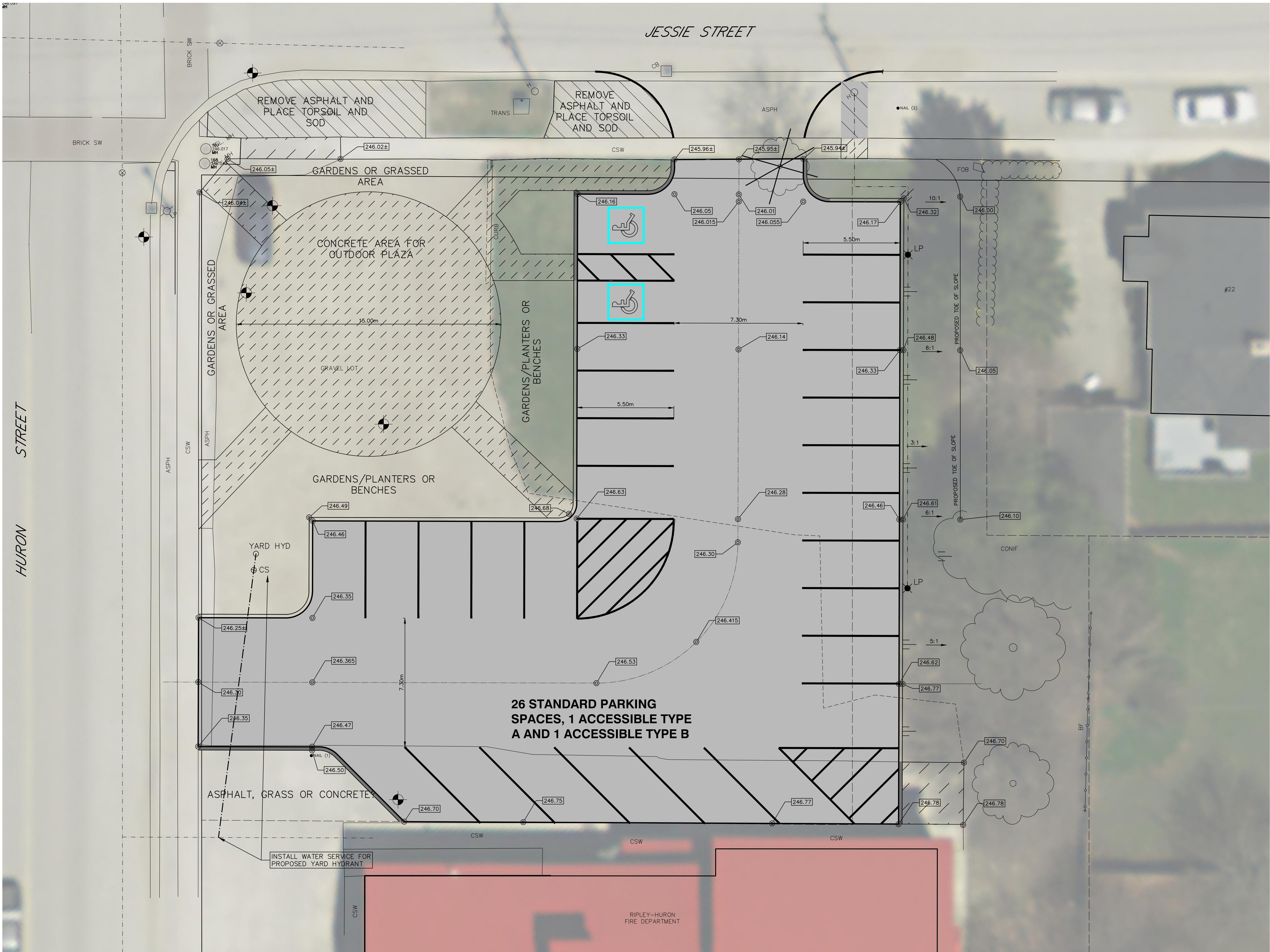
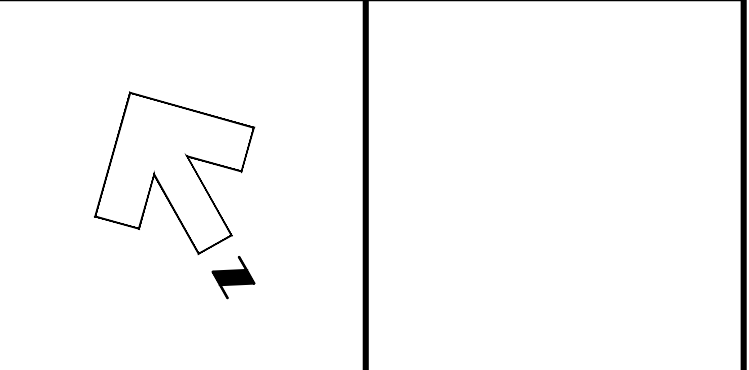


Z:\20075-Huron-Kinloss-Ripley-Plaza\Plaza\Drawings\Preliminary\20075-Ripley-Outdoor-Plaza-Site Plan to dwg, 2021-02-03 11:58:24 AM, DWG To PDF.pc3, 1:25.4



**LEGEND**

- SAN. or STM. EXISTING SEWERS, SANITARY or STORM
- MANH. CB. MANHOLE and CATCHBASIN
- WATERMAIN. WATERMAIN, FIRE HYDRANT
- GASMAIN. GASMAIN
- UNDERGROUND TELEPHONE. UNDERGROUND TELEPHONE
- UNDERGROUND HYDRO. UNDERGROUND HYDRO
- TV. UNDERGROUND T.V. CABLE
- UTILITY POLES. UTILITY POLES
- GRUBBING. GRUBBING
- REMOVE EXISTING CONC. SIDEWALK AND DRIVES. REMOVE EXISTING CONC. SIDEWALK AND DRIVES
- REMOVE AND PLACE CONC. SIDEWALK AND DRIVES. REMOVE AND PLACE CONC. SIDEWALK AND DRIVES
- PLACE CONC. SIDEWALK AND DRIVES. PLACE CONC. SIDEWALK AND DRIVES
- REMOVE EXISTING ASPHALT PAVT. REMOVE EXISTING ASPHALT PAVT
- PLACE HOT MIX ASPHALT 60MM HLS HOT MIX MISC. UNLESS NOTED OTHERWISE. PLACE HOT MIX ASPHALT 60MM HLS HOT MIX MISC. UNLESS NOTED OTHERWISE
- REMOVE EXISTING CONC. CURB. REMOVE EXISTING CONC. CURB
- CONCEPTUAL LIGHT POLE LOCATION. CONCEPTUAL LIGHT POLE LOCATION



**NOTE**

The locations of existing underground utilities are shown in an approximate way only and have not been independently verified by the owner or its representative. The contractor shall determine the exact location of all existing utilities before commencing work and agrees to be fully responsible for any damages which might be occasioned by the contractor's failure to exactly locate and preserve any and all underground utilities.

**BENCHMARK INFORMATION**

B.M. Elev.
-
-
-

Design By: R.R.R. Checked By: -

**PRELIMINARY**

No.	DATE	REVISION
1.	Sept. 30, 2020	Preliminary Design
2.	Feb. 02, 2021	Modified plaza layout

**BMROSS**  
engineering better communities

Goderich	Mount Forest	Samia
----------	--------------	-------

**Township of Huron-Kinloss**  
**Ripley Outdoor Plaza**  
**Site Plan - Option 1**

<b>Contract No.</b> XXXXX	<b>Project No.</b> 20075
<b>Scale (24x36)</b> 1 : 100	<b>Drawing No.</b> 1