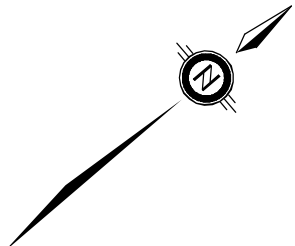


INTEGRATION NOTES	INTEGRATION DATA
BEARINGS ARE UNIVERSAL TRANSVERSE MERCATOR, (UTM), GRID BEARINGS, DERIVED FROM POST PROCESSED STATIC GPS OBSERVATIONS ON MONUMENT "B" AND OCCUPIED REFERENCE POINTS AND TRANSFERRED TO MONUMENT "A", SHOWN HEREON. THE UTM GRID BEARING BETWEEN POINTS "A" AND "B" IS N67°24'05"W, NAD83(CSR83)(2010.0), AND IS REFERRED TO THE CENTRAL MERIDIAN OF UTM ZONE 17, (81° WEST LONGITUDE).	ALL COORDINATES ARE IN METRES, ARE DERIVED FROM POST PROCESSED STATIC GPS OBSERVATIONS AND ARE REFERRED TO UTM ZONE 17, (81° WEST LONGITUDE) NAD83 (CSR83)(2010.0).
DISTANCES SHOWN ON THIS PLAN ARE GROUND AND CAN BE CONVERTED TO GRID BY MULTIPLYING BY THE COMBINED SCALE FACTOR OF 0.999585.	COORDINATE VALUES ARE TO AN URBAN ACCURACY IN ACCORDANCE WITH SECTION 14(2) OF O.REG 216/10.
FOR BEARING COMPARISONS, A CLOCKWISE ROTATION OF 0°16'20" WAS APPLIED TO BEARINGS ON UNDERLYING AND ADJACENT PLANS TO CONVERT THEM TO UTM GRID BEARINGS.	COORDINATES CANNOT IN THEMSELVES BE USED TO RE-ESTABLISH CORNERS OR BOUNDARIES SHOWN ON THIS PLAN.

POINT NO.	NORTHING	EASTING
A	4821,436.69	469,634.21
B	4821,485.79	469,551.29

CAUTION



I REQUIRE THIS PLAN TO BE DEPOSITED UNDER THE LAND TITLES ACT.

DATE _____

J. BRENT ENGLAND
ONTARIO LAND SURVEYOR

PLAN 3R-

RECEIVED AND DEPOSITED

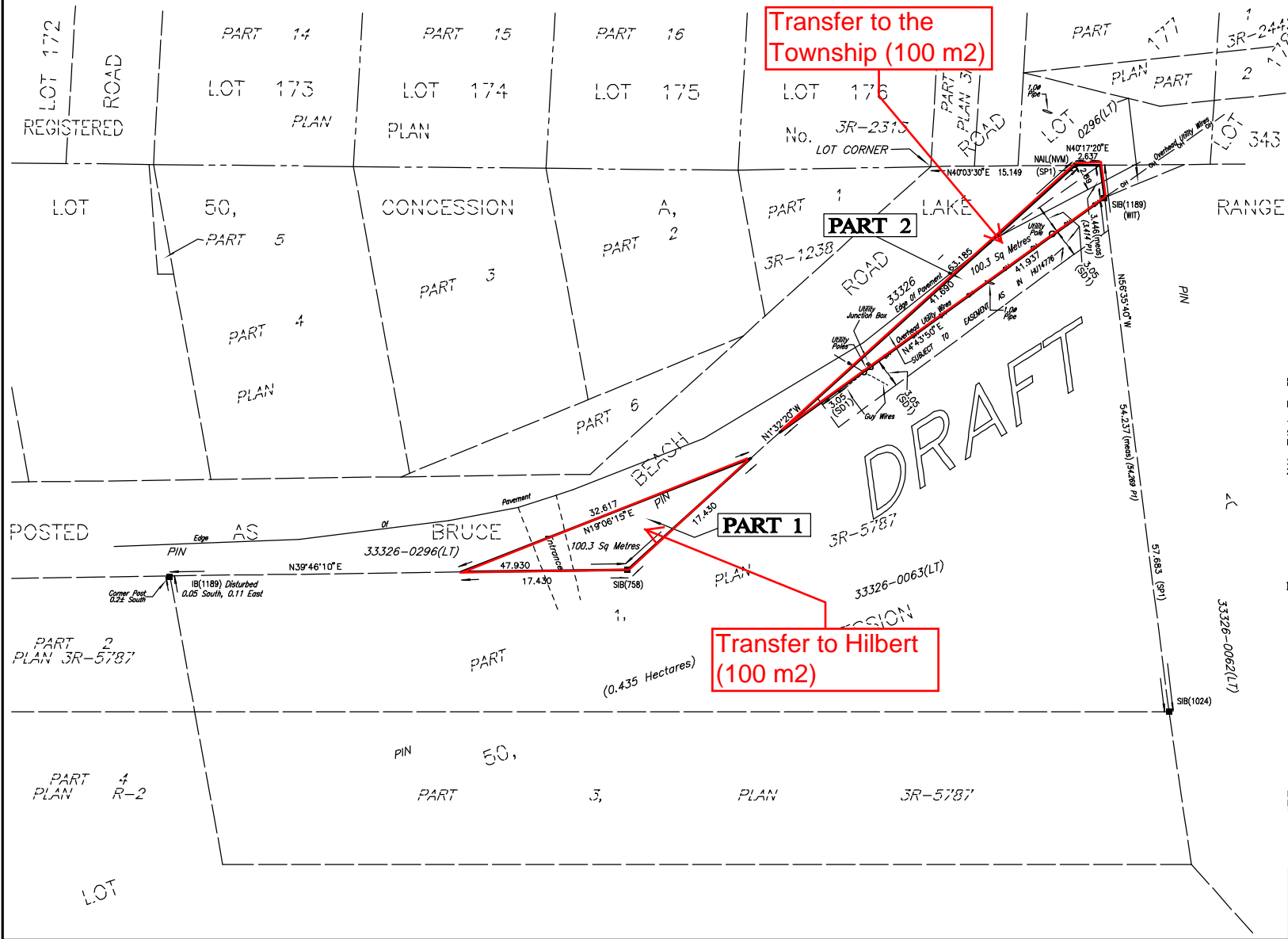
DATE _____

REPRESENTATIVE FOR LAND REGISTRAR FOR THE LAND TITLES DIVISION OF BRUCE (No. 3)

SCHEDULE

PART	LOT	CONCESSION	PIN
1	PART OF 50	LAKE RANGE OR A	PART OF 33326-0296(LT)
1	PART OF 50	LAKE RANGE OR A	PART OF 33326-0063(LT)

PART 1 COMPRISES PART OF PIN 33326-0296(LT) AND PART 2 COMPRISES PART OF PIN 33326-0063(LT)



PLAN OF SURVEY OF PART OF
LOT 50, LAKE RANGE OR CONCESSION A
(GEOGRAPHIC TOWNSHIP OF HURON)
TOWNSHIP OF HURON-KINLOSS
COUNTY OF BRUCE
DINSMORE & ENGLAND LTD., O.L.S.
SCALE: 1 : 300

SURVEYORS CERTIFICATE

I CERTIFY THAT:

- THIS SURVEY AND PLAN ARE CORRECT AND IN ACCORDANCE WITH THE SURVEYS ACT, THE SURVEYORS ACT AND THE LAND TITLES ACT AND THE REGULATIONS MADE UNDER THEM.
- THE SURVEY WAS COMPLETED ON THE _____ TH DAY OF _____ 2021.

OWEN SOUND FEBRUARY 22, 2021 J. BRENT ENGLAND
ONTARIO LAND SURVEYOR

LEGEND

- SURVEY MONUMENT FOUND
- SURVEY MONUMENT SET
- SIB STANDARD IRON BAR
- IB IRON BAR
- SSIB SHORT STANDARD IRON BAR
- NAIL FOUND NAIL IN PAVEMENT
- WT WITNESS
- D&E DINSMORE & ENGLAND LTD., O.L.S.
- 758 BURNS MACKAY ROSS, O.L.S.
- 1024 HARRY GORDON COUPLAND, O.L.S.
- 1189 JOHN CHARLES WOOD, O.L.S.
- P1 PLAN 3R-5787
- D1 INSTRUMENT HU14776
- NVM NO VISIBLE MARKINGS

METRIC

DISTANCES AND COORDINATES SHOWN ON THIS PLAN ARE IN METRES AND CAN BE CONVERTED TO FEET BY DIVIDING BY 0.3048.

© NO PERSON MAY COPY, REPRODUCE, DISTRIBUTE OR ALTER THIS PLAN IN WHOLE OR IN PART WITHOUT THE WRITTEN PERMISSION OF DINSMORE & ENGLAND LTD., O.L.S.

DINSMORE & ENGLAND LTD.
- ONTARIO & CANADA LAND SURVEYORS -

870 2nd AVE. WEST, OWEN SOUND PORT ELGIN CONSULTATION OFFICE
N4K 4M5 (519) 371-9420 515 GODERICH ST.-BY APPOINTMENT
Email: ldos@dmtd.com (519) 852-9008

FILE: 138-0078 ACCT: 20624 DWG: 20624 R-Plan