

**Kelly Lush**

---

**From:** Lake Huron Centre for Coastal Conservation <coastalcentre@lakehuron.ca>  
**Sent:** Monday, February 1, 2021 11:04 AM  
**To:** Kelly Lush  
**Subject:** February Coastal E-Newsletter

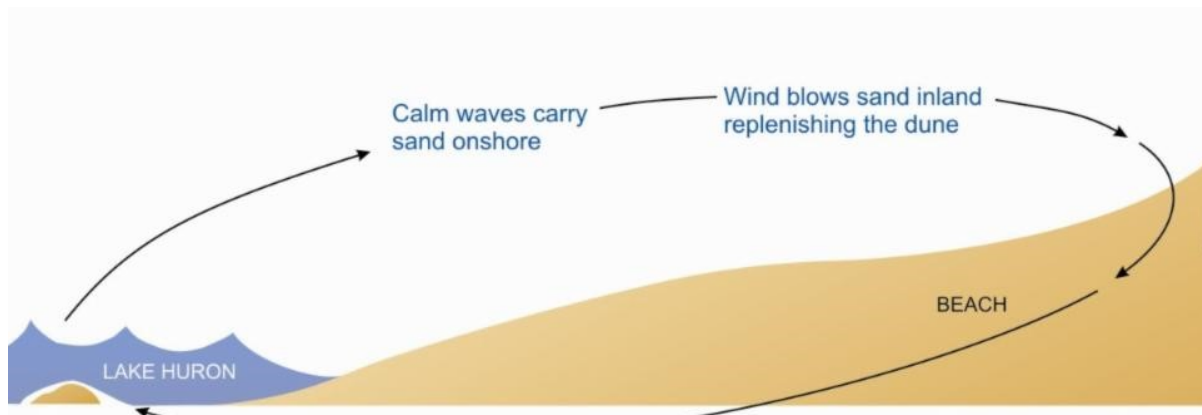


## **Hutten & Co. Land and Shore Donation: \$2,500 to Support the Green Ribbon Champion Project**

Great Lake beaches and dunes are considered one of the **rarest and most fragile ecosystems in Canada**. The beach and dune ecosystem accounts for approximately **2-3%** of Lake Huron's shoreline, yet **supports a wide range of diverse plant and animal species**.

Healthy dunes help create our beloved sandy beaches that attract thousands of people to coastal towns every summer. Having a stable dune ecosystem is extremely economical for small coastal communities and mature dunes are **valued at \$3,000 CAD/linear meter based on the services it provides.**

Beaches are dependent on dunes for their supply of sand because sand is borrowed from dunes at times of low tide to protect from erosion. See the image below to better understand how beaches and dunes work together to supply sand:



Human activities along the Lake Huron shoreline, such as the use of motorized vehicles, has harmed beach and dune ecosystems. Green Ribbon Champion is our coastal stewardship and education program that aims to **preserve, protect, and enhance coastal ecosystems through education and restoration.**



Hutten & Co. Land and Shore understands the importance of beach and dune health. They have chosen to generously donate \$2,500 to the Green Ribbon Champion project. Here is a word from owner, Mark Hutten.

"At Hutten & Co. Land and Shore, we believe in natural beauty, and design refreshing outdoor spaces to make the most of it! Our spaces revolve around the stunning places near Georgian Bay and Lake Huron, and we are thrilled to support the Coastal Centre with their efforts in preserving and promoting healthy, sustainable shores. Together we can protect and share this beautiful resource we're proud to call home!"

-Mark Hutten owner of Hutten & Co. Land and Shore.

This donation will be used for important restoration work conducted by the Green Ribbon Champion program. In 2020, 70 incredible volunteers restored 18 sites along Lake Huron. This involved planting 1600 Native Marram Grass, removal of invasive species such as the Spotted Knapweed and the Sweet White Clover, and installation of dune fencing. We will continue restoration work in 2021 with the help of generous donors like Hutten & Co. Land and Shore!



---

## Beaches and Dunes

### *A Critical Habitat for Species at Risk on Lake Huron*

Protecting species at risk and their habitat is essential to protecting the **biodiversity** of Lake Huron. The dune ecosystem on the Lake Huron shoreline serves as a safe haven for the Monarch Butterfly, Piping Plover, and Pitchers Thistle. **Dune ecosystems house the global population of Pitchers Thistle along the Great Lake basin.** These same dunes provide a critical habitat for the Piping Plover and the Monarch Butterfly. Additionally, these **species at risk rely on dune ecosystems as important stopping grounds on their migratory journeys and provide connectivity for other wildlife.** When coastal dune ecosystems are put at risk, **we are not giving these species a fighting chance.**



This is what **YOU** can do to help dune ecosystems that provide critical habitats for species along Lake Huron:

- Avoid removing or damaging dune vegetation. Roots prevent sand erosion and hold the dune in place during times of strong weather or erosion
- When accessing beaches, use an already established pathway

- Do not use motorized vehicles on beaches. It can instantly destroy an ecosystem that took years to develop.
- Limit beach grooming to once a season if it is necessary.
- Donate your time or resources to the Green Ribbon Champion program

Click the button below to learn more about the importance of Lake Huron's dune ecosystem.

Learn More About Dune and Beach Health on Lake Huron

Make a donation to "dune conservation" by following the link below. If Covid-19 restrictions allow, you can also volunteer for our 2021 Green Ribbon Champion program by choosing "dune restoration and invasive species management" on our registration form!

Donate to GRC

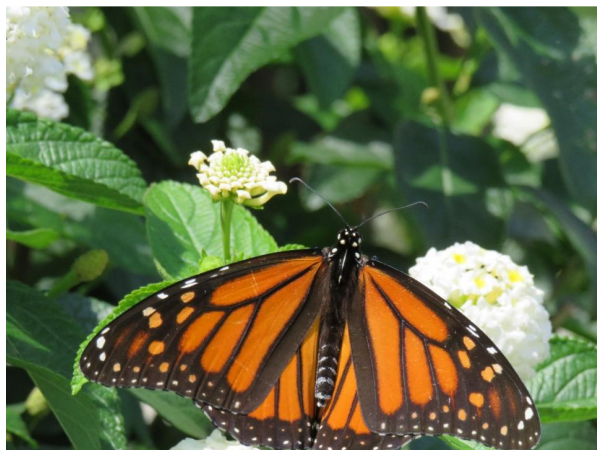
Volunteer Registration

## Species at Risk on Lake Huron

*Monarch Butterfly, Piping Plover, and Pitchers Thistle*

### Monarch Butterfly

In recent years North American Monarch populations have been in steep decline. The Monarch Butterfly is used as an international symbol of conservation and nature; but **degradation of overwintering habitat, climate change, use of herbicides/insecticides, and invasive plant species have put this species at risk.** Monarchs



access to Milkweed has also dramatically impacted the survival rate of the species. Milkweed is non-resistant to the herbicides and insecticides used on crop fields, lawns, and gardens. Monarchs feed solely on Milkweed in the larvae and caterpillar stages; it is also the only plants where Monarchs can lay their eggs successfully.

This is what **YOU** can do to help the Monarch Butterfly:

- Plant native Milkweed ([how to grow Milkweed for Monarchs](#))



- Avoid using insecticides and herbicides on your lawns and gardens,
- Report Monarch sightings (including eggs, larvae, and caterpillars), as well as milkweed sightings, on the [Mission Monarch Website](#).

Learn More About the Monarch Butterfly



## Piping Plover

Ah yes, the Piping Plover. The Great Lakes sand dunes and beach ecosystems provide a critical habitat for the famous Piping Plover. **The removal of vegetation, beach development, and recreational activities are forcing Piping Plovers away from their homes.** Plovers rely on Lake Huron's sand dunes to hatch their young, forage for food, and as a stop over location during their yearly migration to Florida. Piping Plovers become scared very easily. Any disturbance

can cause them to abandon their habitats.

This is what **YOU** can do to help the Piping Plover:

- Do not use motorized vehicles on beaches, this can immediately destroy Plover habitat that takes years to establish,
- If you see a Piping Plover keep your distance. Plovers can easily be scared away from their nests,
- Keep dogs on a leash,
- Avoid raking natural beach debris that Plovers use to make nests,
- Take all garbage and food with you are your beach visit. This attracts predators that could eat Plover eggs and chicks.

Learn More About the Piping Plover

## Pitchers Thistle

Pitchers Thistle grows in windblown sandy habitats, which makes the Lake Huron's coastal sand dune ecosystem a perfect growing place this plant. The Pitchers Thistle has a special relationship to windy lake habitats. When the plant is disturbed by wind it buries into the ground which helps establish a root system. Its roots are part of the native vegetation that grows in dune ecosystems. Having an established root system on dunes limits sand erosion and helps dunes stabilize into the ground.



This is what **YOU** can do to help the Pitchers Thistle:

- Do not landscape over Pitcher Thistle habitat,
- Do not use ATV's on beaches ,
- Look out for and remove invasive dune species,
- Plant pollinating flowers,
- Volunteer for The Coastal Centre as a Green Ribbon Champion.

[Learn More About the Pitchers Thistle](#)

---

## Coast Watchers

As with most environmental programs during the Covid-19 pandemic, our Coast Watchers Citizen Science monitoring program had to adapt. In-person training was successfully transferred to an online format, and in some cases monitoring was temporarily stopped to adhere to public beach closures and comply with Ontario regulations. Even so, we were able to collect important data about Lake Huron.

We want to send a huge thank-you to the 94 dedicated volunteers who have become the eyes and ears of Lake Huron's coast, even during these tough times. With their help we are able to monitor and track atmospheric conditions, wildlife events, algae events, and garbage and plastic wash-ups among others! We receive photos to help visualize what is changing along the shore and now we want to share some of them with you!

Below you'll find a "before" and "after" photo of Coast Watcher 128's staircase in May 2020, and again in October 2020-- that's 6 months apart! High water levels over the last two years have been putting our coastal infrastructure to test.



Wildlife reports included bird species such as spotted sandpipers (*Actitis macularius*), Red-necked Grebes (*Podiceps grisegena*). Coast Watcher 190 had some company while monitoring from a mature Common Watersnake (*Nerodia sipedon*) pictured below. If you are interested in learning more about these excellent swimmers click [here](#). Fossilized stone corals were another interesting find captured by Coast Watcher 165 on the shores of Lake Huron (pictured below).



What goes up, must come down! Balloons released by accident or intentionally pose a threat to wildlife and the quality of land and water. They are mistaken as food and cause entanglement. Many coast watchers found balloon garbage along the Lake Huron shoreline in addition to the usual suspects (photos below). Some ways one can help include shoreline clean-ups, disposing of used balloons properly, and finding fun alternative ways to celebrate without balloons!





This program would not be possible without the generous financial support from Bruce Power and our donors. We thank-you for making this program possible, and look forward to what 2021 will bring!



---

## Call for Volunteers!

The Lake Huron Centre for Coastal Conservation is always looking for helping hands with our Coast Watchers Citizen Science Program! Simply choose your favourite area on Lake Huron's coast to monitor **once per week** from **May until October**.

As a citizen scientist you will contribute observations and scientific measurements to our 16-year data set! Changes such as how many plastic wash-ups we had across the coast, when the peak lake temperature occurred in the nearshore waters.

You can make a difference in monitoring Lake Huron's shoreline! No experience necessary, training will occur in early April through online sessions due to the Covid-19 pandemic.

If you would like to become a Coast Watcher let us know by e-mailing [here](#). More information about the program including past annual reports can be found at this [link](#).





*The Lake Huron Centre for Coastal Conservation is a registered charity founded in 1998 with the goals of protecting and restoring Lake Huron's coastal environment. We are the voice for Lake Huron.*

DONATE TODAY!



[www.lakehuron.ca](http://www.lakehuron.ca)

The Lake Huron Centre for Coastal Conservation | PO Box 477, Goderich, Ontario N7A 4C7 Canada  
[www.lakehuron.ca](http://www.lakehuron.ca)

[Unsubscribe klush@huronkinloss.com](mailto:klush@huronkinloss.com)

[Update Profile](#) | [About our service provider](#)

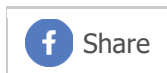
Sent by coastalcentre@lakehuron.ca powered by



**Kelly Lush**

---

**From:** Community Living Kincardine & District <aswan@clkd.ca>  
**Sent:** Thursday, February 4, 2021 9:59 AM  
**To:** Kelly Lush  
**Subject:** CLKD's February 2021 newsletter is here!



February 2021 Newsletter

[View this email in your browser](#)



---

An Inclusive Caring Community, where all people belong and have equal opportunity to participate.

---



February is Inclusive Education Month! It is an opportunity to celebrate the commitment of teachers, administrators, support professionals, students and families who work hard to create classrooms and school communities that welcome learners of all abilities.

Each year, CLKD shares resources and information to help schools promote the full inclusion of students with disabilities. Our inclusive education interactive poster features links to videos, books and printable resources. [Download your copy here.](#)

All children can benefit from truly inclusive school environments that promote diversity and respect differences. Inclusive Education Month highlights the importance of creating inclusive learning environments within the classroom that ensures all learners have equal opportunity to fully participate.

There is also plenty of non-instructional time during the average school day that create rich opportunities for developing friendships, building social skills and promoting the inclusion of students with disabilities. Here are three ways educators foster inclusion outside their classroom: during recess, at lunch and/or at school-based extra-curricular activities.

**1. Help students build the skills they need to reach out.**

Students with disabilities *may* need support to connect with others. If you see a child with a disability watching others play, ask if they are interested in joining the game. The child may need help understanding the rules of the game, may not know what to say to the other children, or may not know how to ask to participate. Empower children by helping them practice and build up their social skills. From an inclusion perspective, supporting children to develop social skills such as sharing, turn-taking, rule following and asking to play, are just as important as supporting them to learn academic skills.

**2. Address gaps in extra-curricular activities.**

Are all of the extra curricular activities at your school geared toward academic or athletic pursuits? What opportunities are there for students of all abilities to meaningfully contribute to or participate in? How accessible and welcoming are these activities – from the location, the physical or sensory environment, to the attitudes of the participants? Are volunteers or peer buddies available to provide support to students who may need it? Take a hard look at the activities available at your school and consider what students may be excluded from these enriching opportunities.

**3. Create more structured activities at recess.**

For some students, the relatively unstructured world of the school playground is exhilarating and full of possibilities. For others, it is overwhelming and uncomfortable. Students who succeed in the structured environment of the classroom may end up spending their recess alone or with adults rather than their peers. Educators can support these students by helping to create more structured activities on the playground. Activity bins, reusable scavenger hunts, or playground-based BINGO cards, board games, sand and sensory toys and co-operative based games can all help to create moments that authentically include students of all abilities.

A great source to find fun new playground games is:

<https://www.playworks.org/game-library/>

We enjoy hearing what the local schools are doing to promote inclusive opportunities. We checked in with Christine Newton at KDSS, "As for Inclusion month, while we are limited in getting the students out into the community, they are doing a terrific job within the school community. The students rocked virtual learning and learned how to use Teams to access their classes. I was super impressed. All our students participated virtually, even with the option to come in, and I would say they were all very successful at being able to access all the technology".

Now that in-class has started back up with a new semester, KDSS offers a variety of academic paths for students that include a selection of inclusive courses and co-op opportunities with options to earn credits. Children who have the opportunity to experience inclusive education are given a better sense of community. Having a sense of community is especially helpful when students graduate high school, as it will improve community involvement, further education, and encourage them to seek competitive employment.

- Family Support

---

## **Lots of Socks is Just Around the Corner!**





Registration for 2021's Lots of Socks Window Display Event is OPEN!

When the Lots of Socks Window Display Event was started more than 6 years ago, we simply could not imagine how successful it would be all these years later.

Last year over **94** local businesses decorated their windows to celebrate, and show support for individuals living with Down Syndrome in this community and around the world. "Sock Selfies" flooded our social media, children sent in their beautiful posters with strong messages of inclusion and this community came together to bring so much awareness to World Down Syndrome Day; we could not be more proud of the businesses, schools and residents that make this event so incredible each year.

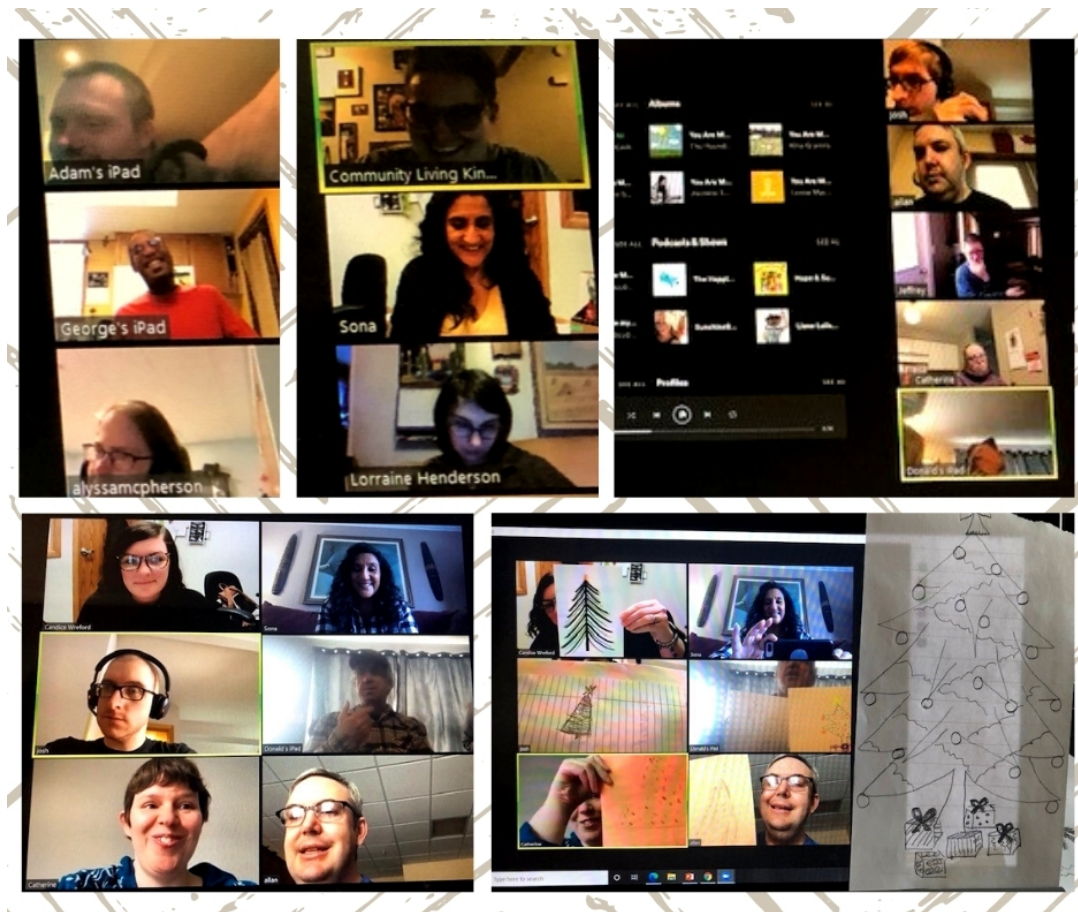
Thank you to our photographer Jamie Edwards of [JME Photography](#) who once again volunteered his time and skills to photograph our models for this event.

A huge thank-you to our models for being a part of this campaign and to all those who helped us get ready for this event amidst the pandemic.

Registration is now open for businesses and schools who wish to participate in the 2021 window display and compete for the "Golden Sock Award".

**Please email [cmc@clkd.ca](mailto:cmc@clkd.ca) to register. Registration is required to receive a poster. Deadline to register is February 22nd.**

## Expression Sessions with CPS



Expression Sessions: Expression with more than just words and voices.

To kick off the New Year, the CPS crew created a new version of our Public Speaking series: Making Connections Through Self Expression. These weekly virtual workshops, coined "Expression Sessions", have been so popular that we are offering two different time slots to accommodate everyone who wanted to join us.

Each Expression Session is a stand alone activity using specific mediums that can be used to express ourselves. The three sessions we have run so far have covered Music, Colours, and Poetry. Participants learn a bit about the topic of the day and how it can be used to share things about ourselves and then we get creative and use that medium to share something about ourselves with the group.

For the Music session, each person created a mini playlist that connected songs to their different moods and emotions. Once complete, we had the opportunity to shared the playlist with others in the session. We listened to snippets of each of the songs together and learned that we each have very unique tastes in music!

During the Colours session, we learned about how colours can affect our feelings (e.g., yellow can make us feel happy – or hungry!). We talked about primary colours, the colour wheel, and then watched a video about mixing colours to create other colours. We drew pictures in black and white and demonstrated how we associate objects with colour (e.g., the word STOP inside an octagon makes us think of the colour red).

Each person had a turn drawing a picture for the other participants to guess what colour the picture was representing.

For the Poetry session, we learned about a few different types of poems - Haiku's, Limericks, Free Verse, and Acrostic. We laughed at the limericks and thoughtfully pondered the free verse and haiku's. We then created a poem together about SEASONS as a group:

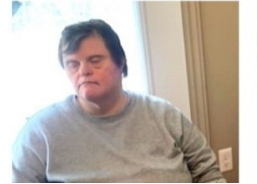
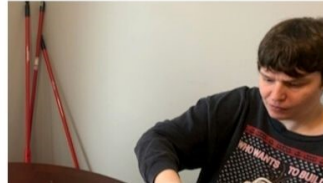
S- is for Sunglasses on a hot day.  
E - is for Explore the colours of the leaves  
A - is for Airplanes in the sky  
S - is for Surfing on the water  
O - is for Ocean going for a sail  
N - is for Nature: birds, squirrels, and bunnies  
S - is for Streaming Netflix, Season after Season after Season!

We have many more themes and mediums to explore in the upcoming Expression Sessions, and look forward to seeing all of the ways that we can share our stories with each other through self expression!

- Community Participation Support (CPS)

---

## **Pizza Party with Pampered Chef!**



### Making homemade pizza with Kathy Drennan from Pampered Chef.

Residents had a fantastic time creating homemade pizza with Kathy Drennan (Pampered Chef) last month.

Kathy has hosted meal-making groups with us prior to the pandemic and we were really missing her great ideas and cooking tips. When she offered to do a virtual cooking demonstration with us, we couldn't resist. Participants decided on making Pizza and it was awesome! Kathy sent the recipe to us ahead of time so we could have all the ingredients ready; she even offered some Gluten free options to try.

It was so great to be able to connect with some of our friends that we have not been able to see since the Pandemic began last year and it was so nice to be able to "cook with" everyone again.

Allan jokingly said, "It is like Chef Ramsay, but a nice boss! An easy recipe and I would use it again in a heartbeat!"

"I love seeing my friends. Looking forward to the next time". - Alyssa

Donald was very happy to be able to see his friends and gave everyone the huge thumbs up.

Rick said he loved seeing everyone and loved creating his own pizza.

Catherine said "hello" to all her friends and "great to see everyone. I really enjoyed making pizza; we can do this again!"



"I love to cook! This sure makes me happy and it was a really good idea to do this at lunch....tasted delicious too!" – M.J

Our host, Kathy, asked if anyone would like to do this again and they all said "yes!"

We are looking forward to resuming our cooking parties (virtually) and have already come up with some ideas on what we will be cooking together next. On our list are tacos, nachos and, of course, a dessert day making cheesecake!

A good time was had by all and a huge thank you to our wonderful host and Chef, Kathy.

- Residential Team

---

## Together We Are Unstoppable!

COMMUNITY LIVING  
Kincardine and District

**TOGETHER** we are  
**UNSTOPPABLE**

with

UNSTOPPABLE  
TRACY

**BrucePower**  
Innovation at work

**Bruce Telecom**  
Connecting our Community



Thank-you to everyone who tuned in for the first of three inspirational sessions with "Unstoppable Tracy".

Community Living Kincardine and District (CLKD) and OASIS, in partnership with Bruce Power, Frank Cowan Company and Bruce Telecom, secured three sessions with "Unstoppable Tracy" to motivate our community, build resiliency and inspire viewers to be "unstoppable" during these challenging times.

In the first session, which can be viewed on our [Facebook page](#) or on our [YouTube channel](#), Tracy spoke about finding opportunity amidst the pandemic and continuing to be unstoppable.

The next session will premiere on **February 25th at 10:00** on [Facebook](#), [YouTube](#) and on Bruce Telecom's Bruce TV (Channel 1). Tracy will be back to talk about "No One Left Behind" and share more of her inspirational stories.

---

## Upcoming Events & Activities

---



### February is Inclusive Education Month!

**Inclusive education** means that all students attend and are welcomed by their neighbourhood schools in age-appropriate, mainstream classes and are supported to learn, contribute to and participate in all aspects of the life of the school.



### No One Left Behind

February 25, 2021

In the second of three "Together we are Unstoppable" sessions, Tracy will share personal stories and inspire us to hold each other up and get through this pandemic together in her session titled "No One Left Behind".

Tune in on [Facebook](#), [YouTube](#) or on Bruce Telecom's

Bruce TV (Channel 1) for the video premiere at 10:00 am on February 25th, 2021.

---



### **WDSD/Lots of Socks Window Display** **March 21st, 2021**

March 21st is World Down Syndrome Day which means Lots, and Lots, of socks for Kincardine.

Email [cmc@clkd.ca](mailto:cmc@clkd.ca) to register your business window for the 2021 Lots of Socks Window Display and watch our [facebook page](#) for more details.

Your business or school could be the next Golden Sock Award Winner!

---

## **Online Resources in Response to COVID-19**

---

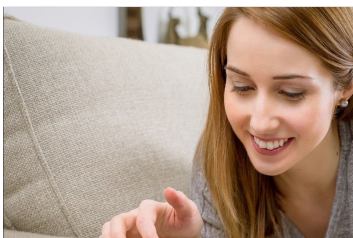


### **Live Streaming Concerts & Music Events!**

[Billboard.com](#) is maintaining a list of all the Livestreams & Virtual Concerts to watch during the pandemic.

[Click here](#) to check out the complete list..

---



### **FREE Virtual Experiences**

While most people continue to stay home, the Canadian Red Cross has compiled a great list of FREE online entertainment and experiences that many of us are missing these days including the Met Opera, Live Animal Cams, Virtual Field Trips, Yoga and much, much more!

[Click here](#) to check out the complete list..

---

To learn more about CLKD's services and events, visit our website!



[Like CLKD on Facebook](#)



[Follow CLKD on Twitter](#)



[Watch CLKD on YouTube](#)



[Send us an email](#)

If this email has been forwarded to you, please consider subscribing to the Community Living Kincardine and District monthly e-newsletter by [signing up here](#).

**Our mailing address is:**

Community Living Kincardine &  
District  
286 Lambton St.  
Kincardine, On N2Z 2Z3  
Canada

[Add us to your address book](#)

*Copyright © 2021 Community Living Kincardine & District,  
All rights reserved.*

[unsubscribe from this list](#)

[update subscription preferences](#)





## Kelly Lush

---

**From:** Kelly Lush  
**Sent:** Friday, February 19, 2021 10:29 AM  
**To:** Kelly Lush  
**Subject:** FW: Electricity Planning Topics at IESO's February Engagement Days – February 22 and 23

---

**From:** IESO Community Engagement <[communityengagement@ieso.ca](mailto:communityengagement@ieso.ca)>  
**Sent:** February 18, 2021 3:59 PM  
**To:** Mike Fair <[mfair@huronkinloss.com](mailto:mfair@huronkinloss.com)>  
**Subject:** Electricity Planning Topics at IESO's February Engagement Days – February 22 and 23

The IESO conducts [stakeholder engagement meetings](#) over the course of 2-3 days once a month. With the calendar of meetings already established for the year, this allows those interested to more effectively plan their participation in these events.

Included among the topics for the February engagement days are opportunities to learn more about and provide input on the IESO's electricity planning processes, including:

- [Bulk System Planning Process](#) (Feb. 22 at 9:00 a.m.): This session will present the steps taken by the IESO to plan Ontario's electricity system and seek input on formalizing this process with stakeholders.
- [Regional Planning Process Review](#) (Feb. 22 at 1:30 p.m.): The IESO recently conducted a review, with input from stakeholders, of the regional electricity planning process which assesses the reliable supply of electricity to Ontario's 21 electricity planning regions. This session will provide an overview of the recommendations in the final report and outline next steps.

Other items on the [February agenda](#) include next steps for engagement on the [Market Renewal Program](#) following the posting of the MRP final design [documents](#) as well as an overview of the [2020 Capacity Auction Results](#).

The full agenda and registration information is available on the [February Stakeholder Engagement Meetings webpage](#).

IESO Regional & Community Engagement

++This email is being sent to all Regional Electricity Network members as well as registered subscribers to receive regional planning updates.

---

This email was sent to [mfair@huronkinloss.com](mailto:mfair@huronkinloss.com)  
[why did I get this?](#) [unsubscribe from this list](#) [update subscription preferences](#)  
IESO · 120 Adelaide St W Suite 1600 · Toronto, ON M5H 1T1 · Canada



(/)

## Council / Committee Meetings – Thursday, February 18, 2021

Explore highlights from Bruce County's Council & Committee Meetings. These meetings are held on Thursdays, twice monthly, beginning at 9:30 AM, unless otherwise posted. Meetings are video livestreamed and complete agendas and minutes are available for public review.



**Feb 22 2021 - 9:00am**

## **2021 Property Tax Policy Review**

The Corporate Services Committee approved the 2021 County-wide tax ratios and class discounts and directed staff to prepare the necessary tax ratio by-law. The Committee also approved a number of programs that will continue in the 2021 taxation year, including tax relief for charities and other similar organizations, tax relief for low-income seniors and low-income persons with disabilities, and the Vacancy Rebate Program. The vacancy rebate and vacancy subclasses will be reviewed in 2021 with a further report to be presented to the Committee. No Optional Property Classes were recommended. The Committee amended the 2021 budget to include \$15,500 for a consultant to provide an Assessment Roll Audit and Remediation Support which is to be funded from the Tax Stabilization Reserve and to be included in the 2022 budget through the regular budget process. The 2022 budget process will also include \$16,200 for a consultant to provide an annual Property Tax and Tax Policy Study and Post Publication Support.

## **2020 Financial Statements Audit Beginning Soon**

Bruce County will undergo an External Audit of the County's consolidated financial statements for the year ending December 31, 2020 by BDO Canada LLP. The audit plan, presented to the Corporate Services Committee on February 18, 2021, highlights and explains key issues believed to be relevant to the audit including audit risks, the nature, extent, and timing of the audit work, and the terms of the engagement. The audit process will conclude with the presentation of a final report to members of the Corporate Services Committee, tentatively scheduled for May 6, 2021. The estimated cost of the audit will be \$59,750.

## **Municipal Property Assessment Corporation 2020 Report**

The Corporate Services Committee received the Municipal Property Assessment Corporation (MPAC) 2020 Municipal Partnerships Report. The report describes 2020 as a year like no other, where the provincial government postponed the 2020 Assessment Update. MPAC shifted priorities with minimal disruption to services,



continuing to capture new assessment to support municipal tax bases, and offering a deferral of the municipal levy payment. MPAC's Board of Directors approved the corporation's 2021 operating budget, with a total municipal levy increase of 0% and no reductions to service. To further capture new assessment, MPAC found efficiencies, extended timelines, and captured an additional \$4.6 billion in new construction and/or additions to existing property, bringing the total new assessment captured in 2020 to \$37.3 billion. Discover more:

<https://news.mpac.ca/2020-municipal-partnerships-report>

(<https://news.mpac.ca/2020-municipal-partnerships-report>)

## **2021 Education Property Tax Rates**

The Ministry of Finance has released the education property tax rates for 2021. The 2021 residential education tax rates will remain the same as 2020, as the property assessments for the 2021 taxation year remains unchanged from 2020. The 2021 business education tax rates will be reduced to 0.88% in 2021 in order to benefit business properties. The property assessment for businesses for the 2021 taxation year remains unchanged from 2020.

## **2021 Property Assessment Update**

A province-wide assessment update took place in 2016 for the 2017 to 2020 property tax years. The valuation date for the properties was January 1, 2016. A new province-wide assessment update took place in 2019 for the 2021 to 2024 property tax years however the implementation of this new update has been delayed by the Province. As a result, the property valuations effective January 1, 2016 will continue to be used for the 2021 property tax year. Any new properties that have been added to the property tax roll since the January 1, 2016 valuation date have been added with a valuation amount as if the property had existed on January 1, 2016. It is not currently known when the next assessment cycle using the January 1, 2019 valuations will commence. Property assessment values for the 2021 taxation year remain the same as they were for the 2020 year for existing properties on the tax roll. Any new properties added in 2020 to the property assessment base are reflected in the change from 2020 to 2021.

## **2021 Notional Tax Rate Update**

Notional tax rates are the tax rates that would raise the same amount of property taxes as the previous year while using the updated assessment roll information for the current year. As the total assessment value increases each year due to

assessment value phase-in, the notional tax rate declines to keep revenues at the previous year's level. While the notional tax rate has no impact on the respective tax rates, it is used to explain changes in the tax levies year over year. The notional tax rate is not used to establish the property tax rates that are used to raise the Council approved budget. The 2021 Notional Tax Rate, the residential tax rate for 2021 assuming the same levy requirement as 2020 applying the new assessment, reflects a residential tax rate of 1.11% less than the 2020 residential tax rate. The upper tier taxes per \$100,000 assessment in 2020 was \$398.70 compared to \$394.32 based on 2021 assessment and 2020 levy requirement.

## **Campground Property redesignated as Rural Recreational**

After a public meeting, the Planning and Development Committee approved an Official Plan Amendment that will create three residential lots on private services on an existing campground property on Isthmus Bay Road north of Lion's Head. The Amendment also redesignates the lands from 'Travel Trailer Park and Commercial Campground' to 'Rural Recreational' to permit the lot creation to occur. A Zoning By-law Amendment (file Z-2020-074) was submitted to change the zoning to permit residential uses, permit slightly reduced lot frontage, and larger rear yard setback to keep development within the Niagara Escarpment Plan 'Escarpment Recreation' designation.

## **Severance on Undersized Farm Property**

After a public meeting, the Planning and Development Committee approved an Official Plan Amendment that will create a 2.471 acre surplus farm dwelling lot with a 68.91 acre retained agricultural lot, located at 2403 Bruce Road 20 in Kincardine. Despite being undersized by Bruce County's guidelines for agricultural viability, the retained agricultural lot will continue to be farmed in the same manner as it currently is. The amendment will allow the applicant to sever a house that is surplus to his needs while contributing to the ongoing viability of his farm operations. The irregular lot configuration of the smaller parcel was developed and proposed by the applicant to reduce the amount of land removed from agricultural production.

## **Severance on Pending Consolidated Farm Property**

The Planning and Development Committee approved an application to sever an existing dwelling on Concession 6 in Arran-Elderslie that is surplus to a farm operation as a result of a pending farm consolidation. The farmland is being acquired by the owner of a farm located directly to the east and also to the north, across Concession 6. The proposed farm consolidation is strongly aligned with Bruce County Guiding Principles on Agriculture. Land consolidations improve the agricultural sector by enabling farms to become more efficient and better integrated in agricultural chains. The application aligns with the Homes Guiding Principle by maintaining the existing residential use on the severed lot.

## **ConnectON Agriculture Asset Mapping Data Sharing Agreement**

The Planning and Development Committee approved the signing of the ConnectON Data Sharing Agreement with the Golden Horseshoe Food and Farming Alliance. Agriculture is a key economic driver for Bruce County and one that the County is continuing to find ways to support. The more that is understood about this important sector of the economy, the better equipped economic development supports are to support it and help it to grow. The ConnectON tool enables users to analyze data and foster a fact-based approach to effective decision making on specific sector supports and growth area opportunities. Mapping and analyzing agri-food and manufacturing assets across Bruce County will contribute to effective planning, decision making and economic development relative to food and agriculture. Collaborating with neighbouring counties enables mapping of agriculture related assets in a single portal regionally.

## **Northern Bruce Peninsula Sustainable Tourism Advisory Group**

The Sustainable Tourism Advisory Group (STAG) was formed in November 2020, with support from Bruce County Council. The group is tasked with advancing the Northern Bruce Peninsula Sustainable Tourism Management Action Plan. STAG's mission is to work collaboratively across organizations, to leverage resources, to share expertise, and to implement the principles and practices of sustainable tourism management. STAG's vision is to develop a thriving, collectively managed tourism economy on the Northern Bruce Peninsula. STAG provides a direct connection with Bruce County's Explore the Bruce program, Tourism Innovation Lab, and Spruce the Bruce program. County Staff will continue to support and help the group execute initiatives so that the visitor experience holds a high standard

for safety and enjoyment, in addition to supporting stewardship to the natural environment. Overcoming the challenges around communications, infrastructure, and capacity management is notably a collected effort.

## **Local Planning Appeal Tribunal Decisions**

The Planning and Development Committee was informed of a recent Decision and a recent Order by the Local Planning Appeal Tribunal (LPAT) on County Official Plan Amendments that were approved by County Council and appealed by the Ministry of Municipal Affairs.

OPA 243 Hopper (LPAT Case PL190553) Decision: In October 2019, County Council adopted County Official Plan Amendment No. 243 (OPA 243). The application was to create a site-specific exception in the Agricultural Area to allow a 50- acre lot to be severed. Council's approval was appealed by the Province. On January 15, 2021, LPAT held a video hearing on the matter. The Tribunal issued its Decision on the matter on January 28, 2021 which states that "the Appeal is allowed and Official Plan Amendment No. 243 to the Official Plan of the County of Bruce is not approved."

OPA 246 Calhoun (LPAT Case PL 200086) Order: In January 2020, County Council adopted County Official Plan Amendment No. 246 (OPA 246). The application was to create a site-specific exception in the Agricultural Area to allow a 9-acre lot to be severed. Council's approval was appealed by the Province. The applicant (Mr. Calhoun) recently advised LPAT in writing that they no longer wish to proceed with the application. On January 28, 2021, LPAT Ordered that "the appeal is allowed and the proposed Official Plan Amendment 246 is not approved."

## **Planning Dashboard - Q4 2020**

Application activity continued to increase in Bruce County in the fourth quarter of 2020 after a rebounding third quarter. The residential sector was very strong, with 60 new residential applications. The agricultural sector continued to be resilient with 19 agricultural applications, including 7 new farm consolidations. Residential lot creation was also strong to end the year, with 24 single-detached or semis and 24 townhomes. The potential population growth is 110. There were 10 industrial/commercial/institutional applications including an application to increase



the maximum lot coverage to permit the construction of a grocery store in Tobermory. One local official plan amendment was made to redesignate commercial lands in South Bruce Peninsula to permit 3 residential lots.

## **Roadway Network Services Levels**

The Transportation and Environmental Services Committee approved amending the Road Network Service Levels to address when a situation occurs that the County's road network maintenance workforce is significantly reduced. The Committee also authorized the Director of Transportation and Environmental Services to temporarily declare a reduced maintenance event under exceptional circumstances when applicable. The COVID 19 pandemic brings forward the possibility where the workforce available for road network maintenance could be significantly reduced. A significant reduction will be defined as 20% reduction in the Operations Divisions workforce. This threshold was established based on an internal impact analysis by the County staff to forecast how services levels would be affected with reduced staffing levels. The Municipal Act does not address situations of reduced workforce and the County would still be responsible for operating and maintaining the road network to meet Ontario Minimum Maintenance Standards. The County Solicitor was consulted and provided notes explaining the burden of proof and the joint and several liability associated with the road network.

## **Speed Limit Change on Bruce Road 10, south of Tara**

The Transportation and Environmental Services Committee approved the speed limit zone on Bruce Road 10 be changed from 80 kilometers per hour to 70 kilometers per hour from 370m south of Concession 6 in Arran-Elderslie and north for 1 kilometre to the current 50km/hr speed limit sign south of Tara.

Transportation and Environmental Services are currently in the process of assessing the Bruce County Road Network to identify locations where the speed limit is reduced by more than 20 kilometers an hour in order that this aspect of traffic control is brought into compliance with design speed recommendations detailed on Transportation Association Canada (TAC) Guidelines.

## **Reallocation of Capital Funding to Blackwell Bridge and Steffler Culvert Projects**

The Transportation and Environmental Services Committee approved that \$405,000 will be transferred from Robinson B Line Bridge project to the Blackwell Bridge project and that \$360,100 will be transferred from Sweiger Bridge and Bruce Road 40 Culvert Repair projects to Steffler Culvert Repairs. As the design and inspection process for Blackwell Bridge continues, it has been identified that the deterioration of certain elements of the bridge have become substantially worse than previously assessed. The funding transfer will ensure the necessary repairs required to Blackwell Bridge will be completed in 2021. The project to repair Robinson B Line Bridge will be postponed until 2022. Steffler Culvert, which has temporary timber supports serving as structural reinforcement and is deflecting under loads, requires additional funding due to the severity of the work required for the replacement.

## **Arran Township Shed Bridge near Invermay Closed**

The Transportation and Environmental Services Committee approved the closure of the Arran Township Shed Bridge on Concession Road 6 near Invermay, which had been temporarily closed for the 2020-2021 winter season. The 33 metre single lane, single span steel truss bridge with a wooden deck was built in 1913 and was originally designed to accommodate horse and carriage traffic. Bruce County will have discussions with the Municipality of Arran-Elderslie about the potential for transfer of ownership of this bridge and a possible future conversion to pedestrian/bicycle use.

## **New Stop Sign and Parking Restriction at Inverhuron Intersection**

The Transportation and Environmental Services Committee approved the installation of a Stop Sign at the intersection of Bruce Road 15 and Lake Street in Inverhuron. The Committee also approved the restriction of parking for a distance of 9 metres easterly from the newly installed Stop Sign. In 2021, the County will undertake a traffic count and an analysis of traffic flows to determine suitable adjustments to the road design or potential 4-way stop at this intersection, following the Transportation Association Canada (TAC) Guidelines.

## **Walkerton Intersection Traffic Study**

In September of 2020, a camera safety study was carried out to provide a safety analysis at the intersection at McNab Street and Durham Street (Bruce Road 4) in Walkerton. The analysis by Transoft Solutions included a near miss analysis, intersection design analysis, video clips, and a technical report which provided recommendations for how to improve safety at this intersection. True North Safety Group (TNS) were also consulted to provide potential safety improvements and identified key safety issues like pedestrians crossing the road unsafely, illegal traffic movements from Tim Hortons onto Durham Street (Bruce Road 4), a right turn lane from McNab Street onto Bruce Road 4 which could be removed, and a warrant for traffic signals. Due to the planned Durham Street bridge replacement project scheduled for 2024/25, it is considered necessary to wait until the bridge work is under design and incorporate the intersection plans into that design. The bridge alignment may impact the road alignment meaning if any work was completed now, there may be changes needed later to tie into the new bridge. However, as pedestrian safety at the intersection is a major factor it is intended to initiate improvements to ensure pedestrian safety is addressed in the interim. This will be done by designing and installing a pedestrian crossing at the McNabb Street and Durham Street intersection. It is intended that this pedestrian crossing can be in place by 2022. Longer term recommendations include a redesign of the intersection and road approaches and the installation of traffic signals.

## **Capital Projects For 2021**

The 2021 capital budget for the Bruce County Transportation and Environmental Services (TES) Department is \$11,790,401. The delivery of the Capital programs (roads, bridges, fleet, equipment, facilities) is complete for 2020. The following is a list of capital projects for 2021.

- Cold in Place Recycling BR 3 and BR 4 east of Walkerton
- Micro Surfacing BR 2, BR 9, BR 19, and BR 29, West Road
- Widening and Rehabilitation BR 6 East Mildmay to Grey Road 10
- Cold in Place BR 8, from BR 14 to Sauble Beach
- Pulverize, pave, and safety improvement at intersection BR 8 and BR 13
- Replace Storm Sewer BR 15 Inverhuron
- BR 25 Improvements and BR 33 Realignment/New Construction. Phase 3 - BR 25 Bruce St to Goderich St
- BR 25 Improvements and BR 33 Realignment/New Construction. Phase 4 - BR 33- Ridge St to Hwy 21.

Roundabout at BR 23 and Concession 2 Kincardine  
BR 6 Teeswater Property settlement  
New Signage BR 12 Formosa  
KIPP Trail Kincardine, Financial Contribution  
Reconstruction BR 30 Chesley  
Luminares BR 2 and BR 3 intersection  
Luminares BR 8 and BR 14 intersection  
Land Purchases at Hwy 9 and BR 1  
West Ridge Development Kincardine Phase 1  
Replace Durham St Bridge, BR 4, Walkerton  
Replace Steffler Bridge, BR 12 North of Belmore  
Replace Culvert BR 86 west of BR 7  
Arran Township Shed Bridge, Invermay  
Oswald Bridge Replacement  
Repair Blackwell Bridge BR 23  
Construction New McCurdy Bridge  
Replace Superstructure Reid Bridge, BR 6, West of Teeswater  
Replace Teeswater River Bridge BR 3 Paisley  
Repair Bridge BR 40 4 km west BR 3  
Repair Culvert BR 86 Lucknow east of Havelock St  
Road realignment BR 1 at Highway 9  
Resurface the Rail Trail between Walkerton and Mildmay.

*This publication identifies highlights from recent Bruce County Council and Committee meetings. Bruce County's Office of the CAO maintains complete agendas and minutes from all Council and Committee meetings, which can be reviewed at [www.brucecounty.on.ca/government/agendas-and-minutes](http://www.brucecounty.on.ca/government/agendas-and-minutes) (<http://www.brucecounty.on.ca/government/agendas-and-minutes>)*

## News

Because we live in a time of constant change, your county government is doing what it can to manage change, stay ahead of the curves, focus on positive ideas and communicate with tax payers.



- [WHAT'S NEWS \(/WHATS-NEWS\)](#)
- [NEWS \(/WHATS-NEWS/BRUCE-COUNTY-NEWS\)](#)
- [MEDIA \(/WHATS-NEWS/MEDIA\)](#)
- [COUNCIL AND COMITTEE \(/GOVERNMENT/BRUCE-COUNTY-COUNCIL\)](#)
- [EVENTS \(/EVENTS\)](#)
- [BUILDING BRUCE COUNTY \(/WHATS-NEWS/BUILDING-BRUCE-COUNTY\)](#)
- [CONTACT \(/WHATS-NEWS/CONTACT\)](#)

Discover more!

[Events and News \(/events\)](#)

Explore knowledge and ideas

[EVENTS AND SEMINARS →](#)

[HOW MANY FAMILY FARMS CAN BE FOUND IN BRUCE COUNTY?](#)

[BRUCE BY THE NUMBERS →](#)

[BUILDING BRUCE COUNTY](#)

## CONTACT US

### Administration Centre

30 Park St., Walkerton, Ontario N0G 2V0

Tel: 519-881-1291

Toll free: 1-800-265-3005

[info@brucecounty.on.ca](mailto:info@brucecounty.on.ca) (mailto:info@brucecounty.on.ca)

---

Bruce County

Business

Tourism

Library

Museum

[Talk to us \(/government/my-bruce-idea\)](/government/my-bruce-idea)

[Tell us your concerns \(/government/tell-us-your-concerns\)](/government/tell-us-your-concerns)

## DEPARTMENTS

Office of the CAO (<http://www.brucecounty.on.ca/departments/office-the-chief-administrative-officer>)

Corporate Services (<http://www.brucecounty.on.ca/departments/corporate-services>)

Transportation and Environmental Services  
(<http://www.brucecounty.on.ca/departments/highways>)

Human Resources (<http://www.brucecounty.on.ca/departments/human-resources>)

Library (<http://www.brucecounty.on.ca/departments/library>)

Museum (<http://www.brucecounty.on.ca/departments/museum>)

Health Services (<http://www.brucecounty.on.ca/departments/health-services>)

Planning & Development (<http://www.brucecounty.on.ca/departments/planning-development>)

Human Services (<http://www.brucecounty.on.ca/departments/human-services>)



(<https://brucegreycommunityinfo.cioc.ca/>)

[Notice of Loss/Injury Claim \(/notice-lossnotice-injury-claim\)](/notice-lossnotice-injury-claim)

#### COUNTY WEBSITES

Business to Bruce (<http://businesstobruce.ca>)

Explore the Bruce (<http://explorethebruce.com>)

Bruce County Public Library (<http://library.brucecounty.on.ca/>)

Bruce County Museum & Cultural Centre (<http://www.brucemuseum.ca/>)

Bruce Remembers (<http://www.bruцерemembers.org/>)

Museum Online Collections (<http://brucemuseum.pastperfectonline.com/>)

Bruce Coast Lighthouses (<http://www.brucecoastlighthouses.com/>)

Compass

(<https://brucecountyonca.sharepoint.com/sites/Compass/Pages/default.aspx>)

**COVID-19  
INFORMATION AND  
UPDATES  
([HTTPS://BRUCECOUNTY.ON.CA/COVID19](https://brucecounty.on.ca/covid19))**

**BRUCE COUNTY  
WINTER ROAD  
CONDITIONS &  
CLOSURES  
([HTTPS://BRUCECOUNTY.ON.CA/ROAD-  
CONDITIONS](https://brucecounty.on.ca/road-conditions))**

## USEFUL LINKS

Road and Bridge Construction and Detours (<https://brucecounty.on.ca/road-construction>)

Nuclear Innovation Institute (<http://www.nuclearinnovationinstitute.com/>)

Bids and Tenders (<https://brucecounty.on.ca/bruce-county-bids>)

Hazardous Waste Collection Schedule (<https://brucecounty.on.ca/living/hazardous-waste-collection-calendar>)

Road Construction (<https://www.brucecounty.on.ca/road-construction>)

EarlyON Child and Family Centres (<https://brucecounty.on.ca/human-services/earlyon>)

Agendas and Minutes (<https://brucecounty.on.ca/government/agendas-and-minutes>)

Employment (<http://www.brucecounty.on.ca/employment>)

Anaphylaxis (Nut Aware) Policy (<https://brucecounty.on.ca/anaphylaxis-policy>)

Application Links (</lrc-application-links>)

File Transfer (<http://www.brucecounty.on.ca/business/ftp-upload>)

Privacy Policy (<http://www.brucecounty.on.ca/privacy-policy>)

Public Washrooms Map (<https://brucecounty.on.ca/bruce-county-public-accessible-washrooms>)

---

© The County of Bruce. All Rights Reserved.

Any documents found on this page are available in a variety of accessible formats or communication supports upon request. Due to conditions beyond our control, there are some instances where we are unable to provide information in an accessible format (for example, our mapping information). We will be monitoring these sections, and develop an accessible solution as technology improves. If you use assistive technology and the format of any content on this web site interferes with your ability to access the information, please contact the Clerk at 519-881-1291 or [dvanwyck@brucecounty.on.ca](mailto:dvanwyck@brucecounty.on.ca) (<mailto:dvanwyck@brucecounty.on.ca>)