



# WDH Foundation ANNUAL REPORT 2020-2021

**Strong Foundation, Strong Hospital**

270 Carling Terrace, PO Box 1228, Wingham ON, NoG 2W0

519-357-3903 | [wdh.foundation@lwha.ca](mailto:wdh.foundation@lwha.ca)

[www.wdhfoundation.ca](http://www.wdhfoundation.ca)



**Wingham & District  
Hospital Foundation**

**2020 – 2021**

# Rising to the Challenge

When the world went topsy-turvy early in 2020 there was a brief moment when I doubted whether or not meeting the funding needs of our Hospital would be possible this year. I shouldn't have worried for a minute. Our community of hospital supporters – like you – are outstanding in their generosity and commitment.

With all levels of healthcare at the forefront of our collective minds, our community rose to the challenge and gave generously. Thanks to the donations received in 2020-2021 the Foundation has provided funding to the Wingham & District Hospital for all the medical equipment and renovations that were requested plus a little more.

Like everyone, we had to be flexible and make some changes. Both the Great Hospital Race and the CKNX Healthcare Heroes Radiothon transitioned to virtual platforms in 2020. However, thanks to loyal corporate sponsors and participants both events continued their traditions of fun, entertainment and strong support for our Hospital.

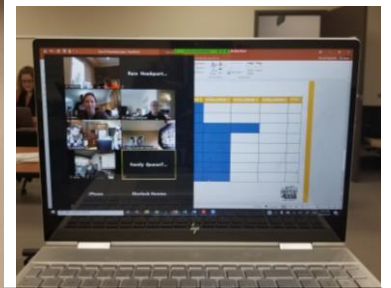
In addition to generous financial contributions, we received many messages of support for our local healthcare workers and heard stories of positive healthcare experiences at our hospital. These kind words are inspiring and reinforced that we are a community that deeply values healthcare and our local hospital. Despite the turmoil and divisions that have arisen recently, it is reassuring to know that having great quality local healthcare is something we all agree is important. Thank you for rising to the challenge and helping us meet the needs of our Hospital.

--- Nicole Duquette-Jutzi  
Executive Director, WDH Foundation



# YEAR IN REVIEW

- Newly renovated specialists' clinic open to patients
- The Great Hospital Race went virtual – raised \$9,500
- Work began on a refresh to the Ultrasound department
- WDH Foundation funded \$302,440 in equipment and facility upgrades
- Public displays of support for our local frontline workers



**923**

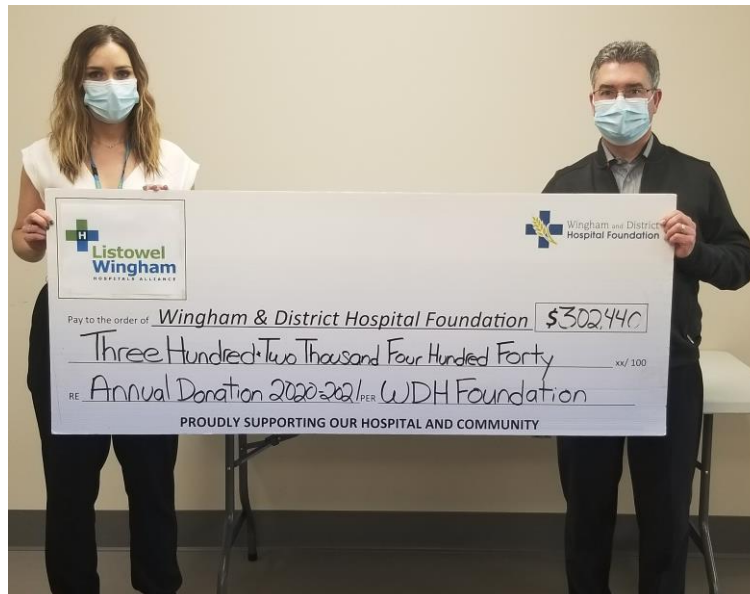
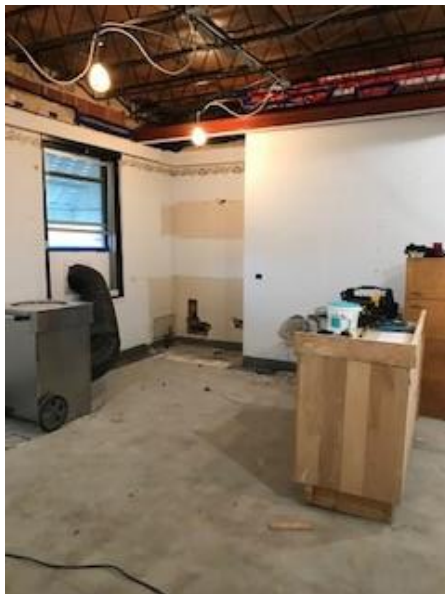
# of donors

**\$679**

avg. donation

**133%**

increase in # of  
online donations





# THANK YOU!

Our hospital wouldn't be the same without you! Your support means our local healthcare workers have the tools they need to care for you, your family and friends. These are just a few of the special people who are committed to local healthcare.

\$25,000 from Leslie Motors, \$2,000 from Foxtan Fuels, \$40,000 from Larry Hudson Chevrolet Buick GMC, \$4,395 from Royal Canadian Legion Ontario Command, \$15,000 from Joe Kerr Limited, \$1,676 from residents of Braemar Retirement Centre





# DOLLARS AT WORK

Your generous donations over the past year have been transformed into important medical equipment and facility upgrades that help care for patients every day. From critical operating room equipment to behind the scenes lab equipment and from diagnoses to treatment your dollars make a difference at every stage of the patient care journey.



**2020-2021**  
**\$302,440**



- Electrosurgical generator
- Specimen refrigerator & blood bank
- Urinalysis machine
- Coagulation analyzer
- Rehabilitation recumbant bike
- Rehabilitation treadmill *(special thanks to the Auxiliary)*
- Infusions pumps
- Gastrosopes & colonoscopes
- Stretchers
- iMop lite
- Tonometer
- Renovations to ultrasound department

Since the inception of the Wingham & District Hospital Foundation, donor dollars have funded over \$9.9 million in equipment and renovations – **thank you!**

# HOW YOU CAN HELP

2021-2022 FUNDING GOAL = \$701,444

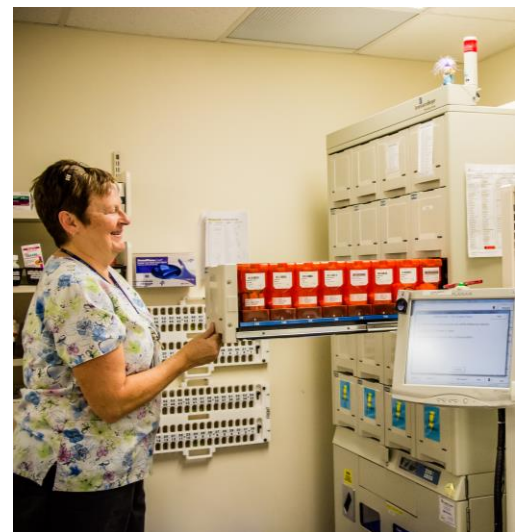
## OPERATING ROOM SCOPE IMPROVEMENT PLAN - \$425,444



- In the last 2 years we have made sizable investments in scope equipment, including a scope pilot control console to ensure patient care is notably improved and meets the evolving technological needs of clinicians.
- Our goal this year is to replace 5 years' worth of outdated scopes with 11 new scopes outfitted with EndoPro IQ technology.
- The 11 scopes include 5 colonoscopes, 4 gastroscopes and 2 pediatric (children's) scopes.
- EndoPro IQ technology allows for improved image management and procedural reporting, it simplifies data collection and removes the need to print pictures.
- Replacing all 11 scopes immediately instead of repairing and replacing over the next 5 years will result in significant savings
- While this is a considerable expense, the new technology will have immediate benefit for patients and clinicians, will support the growth of the surgical program and respects the generosity of our donors by pursuing the most cost effective option available.

## Medication Management Technology - \$226,000

- Automated medication packaging and dispensing technology is key equipment used by the Pharmacy department.
- Unit dose packaging enhances safety with barcode scanning at all steps of the process to ensure the right medication is chosen and delivered every time.
- Each medication has a barcode that is scanned by nursing staff when administering to patients as a control measure
- Each department in the hospital has an automatic dispensing cabinet that houses medication in a controlled manner.
- The cabinets and their software ensure centralized data management, inventory management, usage statistics, diversion safeguards, and point-of-care automation all to ensure safety and compliance.





## PLANNED GIVING – THE NEXT STEP IN CREATING YOUR LEGACY

Planned giving – a.k.a. bequests or gifts in a will – is a way to be remembered for your generosity and make your local hospital part of your life story.

People often worry that leaving a gift in their will to an organization like WDH Foundation means there will be less to give to family and friends. That doesn't have to be the case. In Canada, your estate receives a tax credit for the full value of the bequest. This adds a tax credit to your final income tax return and can help to maximize the value of your estate left for your loved ones.

If you're a part of the 88% of Canadians who haven't yet committed to an estate gift, we hope you'll be inspired to reach out to a financial planner and/or lawyer to discuss how a planned gift can help you achieve your philanthropic goals, support your loved ones, meet your personal financial objectives and create your own legacy.

If you've already made an estate gift to the WDH Foundation, we'd love to connect with you to learn about your goals for your gift and your vision for the future of our hospital.

## LIVING ON THROUGH PHILANTHROPY – KEN MEWHINNEY

Ken MeWhinney grew up in Lucknow and was a lifelong farmer. He spent 30 years working for Bennett Farms in Gorrie. His siblings describe him as hardworking and someone who was active in his community. Ken enjoyed curling, broomball and baseball. He also served on several



community committees in Lucknow including the 4-H Club and the Ag Society. As someone who was involved with community events and organizations during his life it makes perfect sense that Ken made the decision to continue his legacy of generosity and kind-heartedness by leaving an estate gift to the Wingham & District Hospital Foundation.

We are grateful to accept a bequest of \$3,000 on Ken's behalf from his siblings Linda Hunter, Kathy Nicholson and Dave Mewhinney.

Estate gifts come in all sizes and from people of all walks of life. Leaving a legacy gift to your hospital is an important part of safeguarding local healthcare for generations to come and is an option open to everyone.

Leaving a gift in your will strikes a balance between protecting the financial security of loved ones while investing in the future of your community. The WDH Foundation is deeply appreciative of Ken's gift and hopes his generosity and forward thinking will inspire others to follow his lead. Estate gifts, like Ken's, will make a difference at our hospital for years to come.



## Wingham & District Hospital Foundation

Financial Statements for the year ended March 31, 2021

### Wingham and District Hospital Foundation Statement of Financial Position

| March 31  | 2021                | 2020                |
|---|---------------------|---------------------|
| <b>Assets</b>   |                     |                     |
| <b>Current</b>  |                     |                     |
| Cash and bank - general (Note 2)  | \$ 192,064          | \$ 274,481          |
| Cash and bank - health professionals recruitment                            | 69,057              | 32,154              |
| Accrued interest receivable   | 3,763               | 5,775               |
| Accounts receivable   | 2,151               | 2,640               |
|   | <u>267,035</u>      | <u>315,050</u>      |
| Investments (Note 3)  | <u>4,449,698</u>    | <u>3,304,218</u>    |
|   | <u>\$ 4,716,733</u> | <u>\$ 3,619,268</u> |
| <b>Liabilities and Net Assets</b>   |                     |                     |
| <b>Current</b>  |                     |                     |
| Accounts payable and accrued liabilities - general                          | \$ 18,725           | \$ 18,960           |
| Accounts payable and accrued liabilities - health professionals recruitment | <u>51,583</u>       | <u>10,258</u>       |
|   | <u>70,308</u>       | <u>29,218</u>       |
| Deferred revenue - health professionals recruitment (Note 6)                | <u>17,474</u>       | <u>21,896</u>       |
|   | <u>87,782</u>       | <u>51,114</u>       |
| <b>Net assets</b>   |                     |                     |
| Unrestricted  | <u>4,628,951</u>    | <u>3,568,154</u>    |
|   | <u>\$ 4,716,733</u> | <u>\$ 3,619,268</u> |

On behalf of the Board:

\_\_\_\_\_ Director

\_\_\_\_\_ Director



**Wingham and District Hospital Foundation**  
**Statement of Operations and Changes in Net Assets**

| <b>For the year ended March 31</b>                          | <b>2021</b>         | <b>2020</b>         |
|---|---------------------|---------------------|
| <b>Revenue</b>  |                     |                     |
| Donations - general   | \$ 639,688          | \$ 358,729          |
| Donations - capital campaign                                | 227,173             | 502,550             |
| Bequests  | 300,645             | 1,115,408           |
| Health professionals recruitment revenue recognized         | 38,443              | 70,512              |
| Investment income (Note 4)                                  | 85,625              | 69,104              |
| Unrealized gain (loss) on investments                       | 214,647             | (84,425)            |
|   | <u>1,506,221</u>    | <u>2,031,878</u>    |
| <b>Expenses</b>   |                     |                     |
| Bank charges and management fees                            | 19,680              | 10,598              |
| Database software   | 6,195               | 8,969               |
| Donor wall update   | 1,639               | 4,421               |
| Fundraising   | 8,687               | 10,127              |
| Health professionals recruitment expenses (Note 6)          | 38,443              | 70,512              |
| Miscellaneous   | 1,746               | 3,249               |
| Office and postage  | 2,297               | 3,650               |
| Professional fees   | 6,725               | 6,736               |
| Salaries, benefits and administrative costs                 | 46,734              | 47,810              |
| Training  | 639                 | 623                 |
| Travel and conventions                                      | 31                  | 140                 |
|   | <u>132,816</u>      | <u>166,835</u>      |
| <b>Excess of revenues over expenses before donations</b>    | <u>1,373,405</u>    | <u>1,865,043</u>    |
| <b>Donations paid</b>                                       |                     |                     |
| Donation to Wingham and District Hospital                   | 302,608             | 618,936             |
| Donation to Health Professionals Recruitment                | 10,000              | 10,000              |
|   | <u>312,608</u>      | <u>628,936</u>      |
| <b>Excess of revenue over (under) expenses for the year</b> | 1,060,797           | 1,236,107           |
| <b>Net assets, beginning of year</b>                        | <u>3,568,154</u>    | <u>2,332,047</u>    |
| <b>Net assets, end of year</b>                              | <u>\$ 4,628,951</u> | <u>\$ 3,568,154</u> |

## Wingham and District Hospital Foundation Statement of Cash Flows

| For the year ended March 31                          | 2021              | 2020               |
|--|-------------------|--------------------|
| <b>Cash provided by (used in)</b>                    |                   |                    |
| <b>Operating activities</b>                          |                   |                    |
| Excess of revenue over (under) expenses for the year | \$ 1,060,797      | \$ 1,236,107       |
| Items not involving cash                             |                   |                    |
| Donated investments                                  | (21,792)          | (41,610)           |
| Unrealized loss (gain) on investments                | (214,647)         | 84,425             |
| Changes in non-cash working capital balances         |                   |                    |
| Accrued interest receivable                          | 2,012             | 1,576              |
| Accounts receivable                                  | 489               | (136)              |
| Prepaid expenses                                     | -                 | 5,141              |
| Accounts payable and accrued liabilities             | 41,090            | 2,542              |
| Deferred revenue                                     | (4,422)           | 21,399             |
|  | <u>863,527</u>    | <u>1,309,444</u>   |
| <b>Investing activities</b>                          |                   |                    |
| Purchase of investments                              | (2,346,524)       | (3,216,909)        |
| Proceeds from investments                            | 1,437,483         | 1,645,192          |
| Proceeds from mortgage receivable                    | -                 | 251,052            |
|  | <u>(909,041)</u>  | <u>(1,320,665)</u> |
| <b>Decrease in cash during the year</b>              | <b>(45,514)</b>   | <b>(11,221)</b>    |
| <b>Cash, beginning of year</b>                       | <b>306,635</b>    | <b>317,856</b>     |
| <b>Cash, end of year</b>                             | <b>\$ 261,121</b> | <b>\$ 306,635</b>  |
| <b>Represented by</b>                                |                   |                    |
| Cash and bank - general                              | \$ 192,064        | \$ 274,481         |
| Cash and bank - health professionals recruitment     | <u>69,057</u>     | <u>32,154</u>      |
|  | <b>\$ 261,121</b> | <b>\$ 306,635</b>  |



## Wingham and District Hospital Foundation Notes to Financial Statements

March 31, 2021

### 1. Summary of Significant Accounting Policies

|   |  |
|---|--|
| <b>Nature and Purpose of Organization</b> | The Wingham and District Hospital Foundation is a non-profit organization incorporated without share capital under the Canada Corporations Act as a registered public foundation. The Foundation was established to raise funds for the use of the Wingham and District Hospital. The Foundation is a registered charity and is exempt from income tax under the Income Tax Act and may issue income tax receipts to donors.   |
| <b>Basis of Accounting</b>                | These financial statements were prepared using Canadian accounting standards for not-for-profit organizations.   |
| <b>Fund Accounting</b>                    | The Foundation follows the deferral method of accounting for contributions. Revenues and expenses related to program delivery and administrative activities are reported in the General Fund. Revenues and expenses related to Health Professionals Recruitment activities are reported in the Health Professionals Recruitment Fund.  |
| <b>Revenue Recognition</b>                | <p>Restricted contributions are recognized as revenue in the year which the related expenses are incurred. Unrestricted contributions are recognized as revenue when received or receivable if the amount to be received can be reasonably estimated and collection is reasonably assured.</p> <p>Restricted net investment income is recognized as revenue in the year in which the related expenses are incurred. Unrestricted net investment income is recognized as revenue when earned.</p> |
| <b>Contributed Services</b>               | Volunteers contribute their time to assist the organization in carrying out its service delivery activities. Because of the difficulty of determining their fair value, contributed services are not recognized in the financial statements.   |

---

## Wingham and District Hospital Foundation Notes to Financial Statements

March 31, 2021

---

### Financial Instruments

Financial instruments are recorded at fair value at initial recognition. In subsequent periods, securities traded in an active market are reported at fair value, with any change in fair value reported in income. All other financial instruments are reported at cost or amortized cost less impairment. Transaction costs on the acquisition, sale or issue of financial instruments are expensed for those items measured at fair value and charged to the financial instrument for those measured at amortized cost.

Financial assets are tested for impairment when indicators of impairment exist. When a significant change in the expected timing or amount of the future cash flows of the financial asset is identified, the carrying amount of the financial asset is reduced and the amount of the write-down is recognized in net income. A previously recognized impairment loss may be reversed to the extent of the improvement, provided it is not greater than the amount that would have been reported at the date of the reversal had the impairment not been recognized previously, and the amount of the reversal is recognized in net income.

### Foreign Currency Translation

Foreign currency transactions are translated into Canadian dollars at the rate of exchange in effect at the date of the transaction. At the year end date, monetary assets and liabilities are translated into Canadian dollars by using the exchange rate in effect at that date. The resulting foreign exchange gains and losses are included in income in the current period.

---



## Wingham and District Hospital Foundation Notes to Financial Statements

**March 31, 2021**

### 2. Cash

Cash consists of bank deposits that are held at one chartered bank. The account earns interest at a variable rate based on bank prime, payable monthly.

### 3. Investments

|   | 2021                | 2020                |
|---|---------------------|---------------------|
| Cash and savings accounts                   | \$ 210,102          | \$ 602,688          |
| Guaranteed investment certificates, at cost | 345,000             | 634,000             |
| Bonds, at cost                              | 1,698,333           | 1,038,923           |
| Equities, at cost                           | 3,989               | 3,881               |
| Mutual funds, at fair market value          | 2,192,274           | 1,024,726           |
|   | <b>\$ 4,449,698</b> | <b>\$ 3,304,218</b> |

The guaranteed investment certificates mature between June 2021 and November 2022 and bear interest at rates from 1.95% to 2.77% (2020 - 1.9% to 2.77%).

Equities at cost consist of shares that do not have quoted market values.

Mutual funds carried at fair market value have a cost of \$2,061,679 (2020 - \$1,109,151).

Investments include \$407,721 (2020 - \$307,757) denominated in U.S. currency.

### 4. Investment Income

|                           | 2021             | 2020             |
|---------------------------|------------------|------------------|
| Interest                  | \$ 42,517        | \$ 48,978        |
| Dividends                 | 5,587            | 42               |
| Mutual fund distributions | 37,521           | 20,084           |
|                           | <b>\$ 85,625</b> | <b>\$ 69,104</b> |

### 5. Related Party Transactions

The Foundation raises funds for the use of Wingham and District Hospital and donates funds to the Hospital as needs arise. The total donation made to the hospital in the year was \$302,608 (2020 - \$618,936). These transactions are in the normal course of operations and are measured at the exchange value (the amount of consideration established and agreed to by the related parties).

## Wingham and District Hospital Foundation Notes to Financial Statements

March 31, 2021

### 6. Deferred Revenue - Health Professionals Recruitment

The Foundation administers the Health Professionals Recruitment program that is primarily funded by local municipalities to recruit health professionals to North Huron and surrounding area. The deferred revenue represents unspent amounts received specifically for this program.

|  | 2021             | 2020             |
|--|------------------|------------------|
| <b>Revenues</b>                                  |                  |                  |
| Municipalities                                   | \$ 62,752        | \$ 70,031        |
| Fundraising                                      | -                | 1,536            |
| Donations  | 11,038           | 20,000           |
| Interest earned                                  | 173              | 345              |
|  | <u>73,963</u>    | <u>91,912</u>    |
| <b>Expenses</b>                                  |                  |                  |
| Coordinator                                      | 36,955           | 57,368           |
| Travel and recruitment tours                     | 1,090            | 3,109            |
| Office, telephone and advertising                | 1,164            | 856              |
| Recruitment relocation and incentives (recovery) | (766)            | 9,179            |
|  | <u>38,443</u>    | <u>70,512</u>    |
| Excess (deficiency) of revenue over expenses     | 35,520           | 21,400           |
| Deferred revenue balance, beginning of year      | 21,896           | 496              |
| Surplus reimbursement to Municipalities          | <u>(39,942)</u>  | <u>-</u>         |
| <b>Deferred revenue balance, end of year</b>     | 17,474           | 21,896           |
| Accounts payable                                 | <u>51,583</u>    | <u>10,258</u>    |
| <b>Cash balance, end of year</b>                 | <u>\$ 69,057</u> | <u>\$ 32,154</u> |

### 7. Uncertainty Due to COVID-19

On January 30, 2020, the World Health Organization (WHO) announced a global health emergency because of a new strain of coronavirus "COVID-19". In March 2020, the WHO classified the COVID-19 outbreak as a pandemic, based on the rapid increase in exposure globally. Management is actively monitoring the effect on the financial condition, liquidity, operations, vendors, industry, and workforce. Given the daily evolution of the COVID-19 outbreak and the global responses to curb its spread, the Foundation is not able to fully estimate the effects of the COVID-19 outbreak on its results of operations, financial condition, or liquidity at this time.



# SPECIAL THANKS

Here are a few more special supporters whose generosity is worth highlighting. These people went above and beyond to make sure their hospital was well funded this past year and that their community remained well cared for despite all the unexpected challenges the year presented. *Thank you!*



## Lucknow & District Co-Op - \$100,000

Following what they describe as a year with "excellent financial results", the Lucknow & District Co-Op made a record donation of \$100,000 to our hospital. General Manager Allan Scott said, "Everyone has been hit hard by the current situation, and we are so happy that we can give back to the community that has served us well through the years."



## Rod & Joanne McDonagh - \$50,000

At the onset of the pandemic, Rod & Joanne McDonagh reached out to see how they could support their local hospital through these stressful times. They generously donated \$50,000 towards the purchase of 10 additional infusions pumps to prepare for the anticipated changes to service delivery. This is a remarkable gift that continues to benefit patients on a daily basis even following the initial impact of COVID.



## Brussels Optimist Club - \$20,000

The Brussels Optimist Club had planned a dinner and auction in support of 4 local hospitals for March 2020. Of course, it had to be cancelled. Even without the anticipated success of their event the club reached into their reserves and donated \$20,000 to all 4 of their local hospitals. They felt it was important to continue supporting essential services and help our hospital weather the storm of the pandemic.

## OUR SUPPORTERS

*Thank you to all those who have shown their dedication to the Wingham & District Hospital Foundation through their generous contributions. The WDH Foundation recognizes all donors for cumulative lifetime giving of \$500 or more. These special people are the backbone of caring in our community.*

### ***Visionaries \$250,000+***

|   |  |                                     |
|---|--|-------------------------------------|
| Ben & Jenny Hogervorst<br>and Family        | Estate of Elizabeth<br>Adelaid Elliott               | Municipality of<br>Morris-Turnberry |
| County of Huron                             | Estate of Frank Belfour                              | Ron Howatt                          |
| Donald Schultz &<br>Clifford Schultz        | Estate of Mabel Wheeler                              | Township of Huron-Kinloss           |
| Estate of Clark & Betty (Porter)<br>Elliott | Lucknow & District<br>Kinsmen Club                   | Township of North Huron             |
| Estate of Elizabeth A. (Zinn)<br>Hlavach    | McInnes Brothers - James<br>McInnes & Joseph McInnes | Wescast Industries Inc.             |

### ***Benefactors \$100,000 - \$249,999***

|   |                                   |                               |
|---|-----------------------------------|-------------------------------|
| Auxiliary to Wingham &<br>District Hospital | Estate of John Lloyd<br>Robertson | Lee & Thora Vance             |
| Bruce Power                                 | Estate of Lena J. Maybee          | Lucknow District Co-operative |
| County of Bruce                             | Estate of Mary Augusta Lloyd      | Municipality of South Bruce   |
| David & Doris Inglis                        | Estate of Robert Hart             | Royal Homes Ltd.              |
| Edward & Nancy Brown                        | Jim, Catharina & Carl Lee         | 2 Anonymous                   |
|   | Joe Kerr Limited                  |                               |

## ***Champions \$50,000 - \$99,999***

|   |  |   |
|---|--|---|
| Bank of Montreal                          | Estate of Clarence &<br>Emma Henning                               | George & Dianne Kerr                                |
| Bruce County 2008 IPM                     | Estate of Edith May Lunt   | Howick Mutual Insurance<br>Company                  |
| Brussels Transport Ltd.                   | Estate of Gloria Ward  | Kinsmen Club of<br>Teeswater & District             |
| CIBC Wingham                              | Estate of Ina Mary Boyle   | Leslie Motors Ltd. -<br>Mark & Lisa Leslie          |
| Dr. Marie Gear & Larry Cerson             | Estate of J. Fraser Mustard  | LeVan Family Foundation                             |
| Estate of Arthur J. McDonald              | Estate of Thomas Thomson<br>Leiper                                 | Lions Club of Wingham                               |
| Estate of Charlotte Laurretta<br>McBurney | Estate of William Leiper   | Power Workers' Union Bruce<br>Site Equity Committee |
| Rev. John & Evelyn Neilson                | Roy Wormington<br>"In Memory of Catherine and<br>Roger Wormington" | TD Bank Financial Group -<br>Wingham Branch         |
| Rod & Joanne McDonagh                     | Royal Canadian Legion<br>Ontario Command<br>Charitable Foundation  | Township of Ashfield-<br>Colborne-Wawanosh          |
|   | Snobelen Farms   | 1 Anonymous   |

## ***Builders \$25,000 - \$49,999***

|                            |  |                            |
|----------------------------|--|----------------------------|
| Bill & Linda Kieffer       | Estate of Robert Alfred Earl                       | McDonagh Insurance Brokers |
| Bob & Marlene Foxton       | Estate of Sara King                                | Nelson & Myrla Frank       |
| Brian & Mary Lou Cameron   | Eurohome Appliance - Henry &<br>Marilyn van Heesch | Nicki & Bill Glassier      |
| Charles H. Ivey Foundation | Fireside Cafe -<br>David & Linda Phillips          | Ross & Mary Adele Davies   |



*Continued - Builders \$25,000 - \$49,999*

|                                    |  |   |
|------------------------------------|--|---|
| Clark & Elizabeth Elliott          | Foxton Fuels Ltd. - Mark<br>Foxton & Lisa Hearnden | Sheldon & Lisa Baker<br>and Family                                |
| Cliff's Plumbing & Heating         | Hans & Gerrie Kuyvenhoven                          | Teeswater Agro Parts & Family<br>of Brian & Doug Ireland          |
| Douglas Freeborn & Helen<br>Hinton | Helen Underwood Memorial                           | Teeswater Concrete Ltd.   |
| Dr. Yang Liu and Family            | HuronTel   | Tiffin Funeral Home -<br><br>Steve & Kendra Tiffin                |
| Estate of Allan Cameron<br>Graham  | Ian & Jean Montgomery                              | Trillium Mutual Insurance<br>Company                              |
| Estate of Douglas Allan Bruce      | J.P. Bickell Foundation                            | Wallenstein Feed Charitable<br>Foundation                         |
| Estate of E. Hanna                 | James Simpson Farms Limited                        | Watson's Home Hardware &<br>Building Supplies                     |
| Estate of Elmer Bruce              | Larry Hudson Chevrolet<br>Buick GMC                | West Wawanosh Mutual<br>Insurance Company                         |
| Estate of George Underwood         | Libro Credit Union -<br>Wingham Branch             | Wilma & Bill Harper<br>Foundation - in memory of<br>Robert Harper |
| Estate of James Robert Wilson      | Mabel Wheeler                                      | Wingham Sportsmen<br>Association                                  |
| Estate of Mabel MacDonald          | McBurney Funeral Home Ltd. -<br>Dayna Deans        | 2 Anonymous   |

## *Leaders \$10,000 - \$24,999*

|   |  |   |
|---|--|---|
| Andy & Bev McBride                            | Estate of Peter Laird                          | Molesworth Farm Supply Ltd.                 |
| Ange Chester Memorial Fund                    | Estate of Rena McNab                           | Monique Cameron                             |
| Belgrave & District<br>Kinsmen Club           | Estate of William Craig                        | Monoway Farms Limited                       |
| Bill & Jenny McGrath                          | Frank & Loreen Alton                           | Montgomery Ford - Craig Beck                |
| Brett W. Lammie & Associates                  | George, Elizabeth &<br>Katherine Procter       | Murray & Joyce Vincent                      |
| Chester & Bell Hackett<br>and Family          | Germania Mutual Insurance                      | Norman White                                |
| Dale & Debbie Gammie                          | Glen Walker & Joanne Cook                      | Old Light Lodge #184                        |
| Doug & Jackie McBurney                        | Hensall District Co-Op                         | Ontario Credit Union<br>Foundation          |
| Eileen Bennett<br>"In Memory of Jack Bennett" | Howson & Howson Ltd.                           | Optimist Club of Brussels                   |
| Estate of E. Edighoffer                       | Huron Chapter #89 Order of<br>the Eastern Star | Paul & Elaine McNally                       |
| Estate of Edna Agnes<br>McDonald              | Huron County IPM 2017                          | Private Giving Foundation                   |
| Estate of Elizabeth Kate Tiffin               | Jack & Nancy Gillespie                         | R. J. Burnside & Associates                 |
| Estate of Evelyn Ileen Hupfer                 | Karri-Anne & Bart Cameron                      | Ross & Barbara Anderson                     |
| Estate of Gordon Godkin                       | Keil Dadson Insurance Brokers                  | Royal Canadian Legion<br>Lucknow Branch 309 |
| Estate of Helen Dunbar Martin                 | Ken & Vangie Spears                            | Scotiabank                                  |

***Continued – Leaders \$10,000 - \$24,999***

|                                 |   |                                     |
|---------------------------------|---|-------------------------------------|
| Estate of Joan Elizabeth Little | Ladies' Auxiliary to the<br>Walkerton Knights of Columbus | Takla Foundation                    |
| Estate of John A. Nicholls      | Logan Hallahan<br>Memorial Event                          | Whitechurch United Church           |
| Estate of John Roulston         | Lucknow & District Lions Club                             | Wingham & District<br>Optimist Club |
| Estate of Kathleen MacDonald    | Lucknow & District<br>Lions Ladies                        | Wingham Homecoming 2004             |
| Estate of Lena Mustard          | Michael McGlynn Memorial<br>Scholarship Fund              | Wingham Homecoming 2014             |
| Estate of Margaret Little       |   | 3 Anonymous                         |

***Advocates \$5,000 - \$9,999***

|                              |                                       |   |
|------------------------------|---------------------------------------|---|
| Allan & Sharon McDonald      | BDO Canada LLP -<br>Linda & Dan Bross | Bluewater Shrine Club                         |
| Auburn & District Lions Club | Bill Johnston                         | Blyth Legion Ladies Auxiliary                 |
| Barry & Joan MacPherson      | Blackburn Radio Inc.                  | Blyth Lions Club                              |
| Barry & Penny Mulvey         | Bluevale Community Committee          | Boris & Norine Milosevic                      |
| Bruce & Candice Howson       | George & Shirley Wheeler              | Murray & Mary Hall                            |
| Cal Burke Electric Ltd.      | George Dickson                        | Murray & Patricia Gaunt                       |
| Carol Lessard                | George Taylor                         | Murray Hoover                                 |
| Cecilia Miltenburg           | George Underwood                      | Neil & Joan Vincent                           |
| Christine's Clothes Closet   | Girls Night Out Event                 | Noreen Gnay                                   |
| Clarence & Emma Henning      | Gord & Ruth Baxter                    | North Perth-North Huron Family<br>Health Team |



*Continued – Advocates \$5,000 - \$9,999*

|                                 |   |  |
|---------------------------------|---|--|
| Clifton & Margaret Walsh        | Gordon Montgomery                           | Ontario Power Generation<br>Charity Trust                      |
| David & Betty Shaw              | Gordon Roulston                             | Patricia Spencer "in memory of<br>Russell & Margaret Zurbrigg" |
| David & Sandra Stockall         | Gore Mutual Insurance Company<br>Foundation | Paul & Chris Dickson   |
| Diane & Don Thompson            | Grant MacIntyre                             | Peter & Linda Dinsmore<br>and Family                           |
| Dianne Hawthorne                | Greg & Sandra Buchanan                      | Pharmasave Wingham - Hany<br>Tadros & Caroline Mikhail         |
| Doug & Amy Miller               | Helen Cleland                               | Ray & Barbara Bateman  |
| Dream Vacation Lottery          | Inge Wraith                                 | Ray & Lois Baynton   |
| Drs. Shaun & Bonnie Marshall    | Insurance Bureau of Canada                  | Richard Ivey Foundation  |
| Earl & Betty Dolmage            | Investors Group                             | Richard Wills  |
| Edward & Naomi Knorr            | J.A. Porter Holdings Ltd.                   | Robert & Agnes Bregman   |
| Eileen Ashton                   | Jackman Foundation                          | Robert Ritter  |
| Elliott Nixon Insurance Brokers | James & Donna Hall                          | Rowland & Shirley Kaufman                                      |
| Estate of Dr. R. C. Redmond     | James & Helen Brown                         | Royal Canadian Legion Wingham<br>Branch 180                    |
| Estate of George Anderson       | James & Mary Henderson                      | Ruth Thompson  |
| Estate of Ida Clearine Evans    | James & Rhelda Stockall                     | Stainton Hardware (Wingham)                                    |
|                                 |   | Stanley Door Systems Ltd.                                      |

*Continued – Advocates \$5,000 - \$9,999*

|  |  |   |
|--|--|---|
| Estate of Jean King                          | Jeff & Peg Lockridge                       | Tim & Margaret Willis                       |
| Estate of Josephus Peters                    | Joanne Cook                                | Tom & Brenda Deyell                         |
| Estate of Lloyd G. Casemore                  | John Kuyvenhoven                           | Turnberry Estates -<br>Russ & Janice Taylor |
| Estate of Mina Ritchie                       | Ken & Doreen Lilley                        | Walkerton Knights of Columbus               |
| Estate of Ralph Rowland                      | Ken & Marilyn Wood                         | Walter J. Blackburn Foundation              |
| Estate of Ross Anderson                      | Lake Huron Learning Collaborative          | Wightman Telecom                            |
| Estate of William McCall                     | Lions Club of Brussels                     | William & Bev Woodley                       |
| F. E. Madill School                          | Lois Farrish                               | Wingham Action Committee                    |
| F.K. Morrow Foundation                       | Lynn Hoy Enterprises -<br>The Hoy Family   | Wingham Firefighters                        |
| Fireside Cafe -<br>Phillip & Darlene Stelzer | MacKenzie & McCreath Funeral<br>Homes Ltd. | Wingham Kinette Club                        |
| Five Star Quilters Guild                     | Marcrest Manufacturing                     | Wingham Knights Of Columbus                 |
| Formosa District Lions' Club                 | Margrét Comack                             | Wingham Lawn Bowling Club                   |
| Gay Lea Foods                                | Marjorie May Houston                       | Wingham Medical Association                 |
| George & Berdella Kieffer                    | MicroAge Basics                            | Wingham Sales Arena                         |
| George & Elizabeth Procter                   | Municipality of Huron East                 | 2 Anonymous                                 |
|  | Murray & Hilda Wales                       |   |

## Caring in action

# Your words, your stories, your difference

Words of thanks and gratitude mean the world to the caregivers who dedicate themselves to keeping us all healthy. Sharing your story of a positive experience at our hospital helps connect others to the value of local healthcare and inspires them to take action to sustain our hospital. Share your words of gratitude and positive experiences by visiting:

[www.wdhfoundation.ca](http://www.wdhfoundation.ca)

Keep up the good work. It is so reassuring to know that the help is there when we need it.



My Mom and Dad lived in Wingham for over 50 years. When they needed Hospital care they always got the best and the doctors and nurses were always kind and caring



I had a relative who stayed in the hospital from March until July 2020. Staff were wonderful. Used Zoom to keep us in touch, did outdoor visits, etc. Just good to have a hospital so close when we need it and that happens more as we age.



We've had, gall bladder surgery, appendix surgery, hernia repair—every time we were both well looked after. We feel very blessed to have had our local hospital throughout the 40+ years we have been living here.

My sister went to Wingham hospital to receive her chemo treatments. She got nothing but the best of care and I would like to thank your wonderful hospital and staff for your care of our many friends and family over the years.







Wingham & District  
Hospital Foundation

## SAVE THE DATE



*Saturday, October 2, 2021*

### **The Great Hospital Race**

Join us for a morning of friendly competition in support of our Hospital. Teams will race to complete a variety of goofy, messy, puzzling and sporty challenges. Cash prizes are up for grabs and smiles are guaranteed. Get a sneak peek by visiting us on Facebook for photos from previous years. Open to all ages and fitness levels. The more the merrier.



*Saturday, October 16, 2021*

### **20<sup>th</sup> Annual CKNX Healthcare Heroes Radiothon**

We're excited to celebrate this milestone year for the tremendously successful Radiothon. We hope you'll help make this year better than ever by listening, calling and pledging. Listen live all day on AM920 and cknx.ca and at the top of each hour on 101.7 The One and Classic Rock 94.5. This year it is our goal to raise \$76,000 towards upgraded medication management equipment.

There are so many ways to support your hospital during the Radiothon

Visit [www.wdhfoundation.ca](http://www.wdhfoundation.ca)

Text HERO WINGHAM to 45678 during October to give \$10

Call 1-877-CARE-4U6 or 519-357-1310

**More info at:**

[www.wdhfoundation.ca](http://www.wdhfoundation.ca) or  [@WDHFoundation](https://www.facebook.com/WDHFoundation)